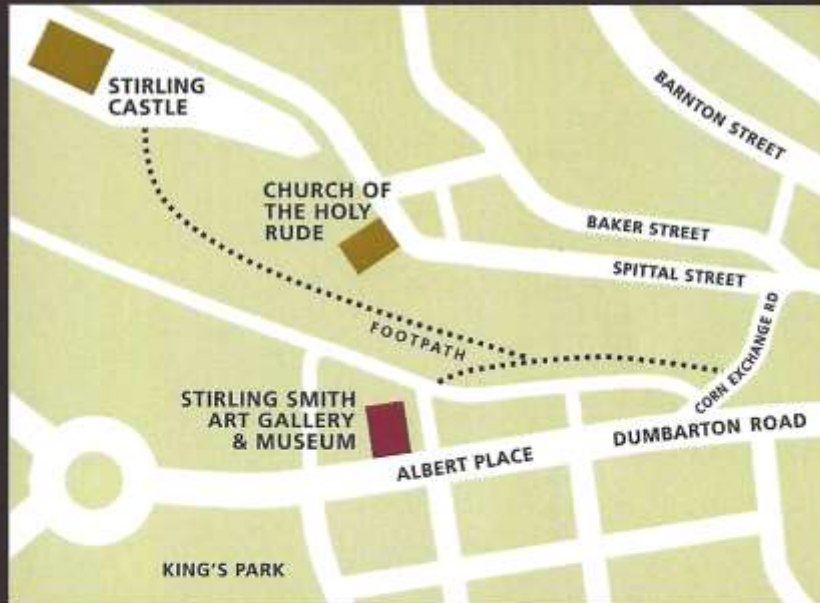


THE NEISH COLLECTION OF
BRITISH PEWTER



THE STIRLING SMITH
ART GALLERY & MUSEUM



The Stirling Smith Art Gallery and Museum
Dumbarton Road, Stirling, FK8 2RQ



Open Tuesday to Saturday 10.30am - 5.00pm
Sundays 2pm-5pm
Café, meeting rooms & gardens.
Admission and parking free.

Tel. 01786 471917
museum@smithartgalleryandmuseum.co.uk
www.smithartgalleryandmuseum.co.uk
www.facebook.com/TheStirlingSmith
www.twitter.com/SmithMuseum



The Stirling Smith is a Registered Scottish Charity
No. SCO16162 with funding from Stirling Council

PEWTER PRODUCTS

Before the products of the mass production pottery factories in the eighteenth century, pewter (an alloy of tin, lead and copper) was the most common substance used for the making of household utensils. Plates, drinking vessels, pots, pans, lamps, candlesticks, snuffers, inkstands and toys were all made of pewter. Pilgrim badges in the Middle Ages were made of pewter, and pewter jewellery making still continues today. After the Scottish Reformation of 1560, churches ordered communion plate, flagons and tokens from pewterers, a practice which continued into the nineteenth century.



Pewterers in Scotland belonged to the Hammermen Craft, the trade guild which regulated all who wielded the hammer. These included gold, silver and blacksmiths, as well as clock makers, saddlers, lorimers and pewterers. Their motto was 'By hammer in hand, all arts do stand' and their patron saint was St. Eloi, who in ancient times had made a golden throne for King Clovis. Most Scottish churches in the towns or burghs had an altar to St. Eloi.



THE STIRLING HAMMERMEN

Between 1599 and 1620 when the town was small it registered four pewterers, a greater number than existed in any royal burgh except Edinburgh. The Incorporation's earliest minute book is dated 24 January 1596 when one Robert Robertson, Deacon of the Hammermen and pewterer, gave a statement of accounts.

It is, however, clear that the Stirling Incorporation dates from an earlier period. In 1604 it was recorded that Robert Bruce, a saddler, had delivered to the new Deacon 'in keeping for the wekfare of the craft, thrie pieces of evidence, with an copies in peper, togidder with two buiks with two pensalls, with ane sucthe.' A latter minute stated the 'evidence' comprised parchment charters and these may well have been the original, earlier Seals of Cause granted to the Hammermen about which to-day nothing is known. The 'two buiks' presumably contained the earlier minutes while the 'pensalls' would have been the flags of the Hammermen - again long lost like the 'ane boxe with twa keyis' that held the craft funds.

THE NEISH COLLECTION

Pewter is immensely popular with collectors world-wide and today, the once-common domestic, civic and church artefacts made of pewter are hard to find. For nearly fifty years, Alex Neish has sought to keep the best of British pewter in the United Kingdom by buying it in the sale rooms. A graduate of the University of Edinburgh, he has identified the Stirling Smith Art Gallery and museum as the ideal home for his collection. His collection has many exquisite, rare pieces, such as this rose water dish (shown left), made by Richard Weir of Edinburgh, for King James VI's palace of Holyrood c1600.

COLLECTION HIGHLIGHTS

Pewter Tankard, 1690:

The tankard is decorated with the portraits of William III and Queen Mary. It commemorates the Glorious Revolution of 1688 when they were chosen as monarchs of Britain over the catholic King James VII.



Beggar's Badge: This rare pewter pilgrimage badge depicts the murder of St Thomas Becket (c.1118 - 1170) on 29 December 1170. Becket was made Archbishop of Canterbury in 1162 by King Henry II, but fell out of favour as he sought to defend the rights of the church against those of the sovereign. Four knights killed Becket after the king uttered the famous line: 'Will no one rid me of this turbulent priest?'



A Grain Gallon, 1707: In civic life, pewter was often used in the production of weights and measures. After the Act of Union in 1707 when Scotland became part of Great Britain, the old weights and measures were discarded and new ones adopted. This grain gallon, which carries the couchant wolf, the symbol of the Royal Burgh of Stirling, was one of them.

A Beggar's Badge for the Fife town of Dysart: Beggars' badges were proof that the beggar was licenced to beg. They were issued by Scottish local authorities from 1650 to 1800. Stirling burgh also regularly issued badges, but there are none in any public collection.



Wolf's Tooth Rattle, 1540s: The infant to whom this rattle belonged teethered by pressing his or her sore gums on the wolf's tooth. The rattle features four copper alloy bells and its stem ends in a whistle.

THE PRESENTATION OF THIS TALK IS INTENDED TO BE AS A POWER POINT SHOWING THE INTRODUCTORY THREE PAGES AND FURTHER EXAMPLES OF THIS REMARKABLE COLLECTION.

DURING THE SHOWING OF THE PHOTOGRAPHS OF THE COLLECTION THE SPEAKER WILL GIVE SOME DETAILS OF ALEX NEISH AND HOW THIS COLLECTION CAME TO BE FORMED.

HIS LIFE HAS BEEN FAR DIFFERENT TO MOST OF THE PEOPLE WHO WILL HEAR THIS TALK.

IT IS HOPED THAT YOU WILL FIND THE TALK INTERESTING AND ENJOY SEEING SOME OF THE HUGE VARIETY OF PEWTER THAT THIS COLLECTION HOLDS

– A VARIETY UNPRECEDENTED IN ANY OTHER KNOWN COLLECTION.

THE ALEX NEISH COLLECTION AT STIRLING

As a collector your collection often reflects not only your means - but also quite often your personality and your lifestyle.

The Neish Collection at Stirling is a remarkable collection and the collector's circumstances were certainly unusual.

Alex Neish came from modest circumstances in central Scotland, born just before the Second World War. He was clearly very bright, academic and very intelligent.

On leaving Edinburgh University in the late 50s his immediate option was – to go on studying International Jurisprudence at The Hague, a subject he was considered very knowledgeable and skilled at, with a scholarship organised by his Professor/mentor – to be followed by staying at The Hague - or lecturing back at Edinburgh University.

Patricia Neish's father was a successful International Commodity Trader who moved from China to Japan anticipating the Mao communist advance – and eventually to Argentina. At a dinner in London to which he had invited Alex he introduced him to the eldest son of an Argentine family with agricultural interests across the Globe.

Shortly after visiting Argentina to meet Patricia's mother Alex was offered a job with this agricultural enterprise. With two sons of the President of this Conglomerate Alex was tasked with reorganising their information system. It was a new and exciting world. He stayed.

Alex was born in 1937, he and Patricia married in 1960. They were in Argentina from 1962-1976 and Brazil from 1976-1996 and thereafter Barcelona, Spain.

Previously he had written articles as deputy editor of the Scottish Council for Development and Industry Monthly Magazine. In Argentina he wrote articles for the Guardian Newspaper and the Scotsman.

The information system led him to being in charge of administration for the group itself. He was also given authority as to Finance and serious authority in the Legal Department and he thus became the first non-family main board director.

Disk 3. Sheet 31; 44.0878 - 44.0887

no images: 44.0879, 44.0880, 44.0882 - 44.0884,



878	A communion set by Kiniburgh of Edinburgh engraved Un Asso. Congregation . Rousay. 1834"	1834	Part of a 13 piece communion set: one of four lavers, or lidded flagons, each with double lobe thumbpiece and scroll handles inscribed 'Un. Ass. Congregation Rousay 1834', the touch of Kiniburgh, 25.5 cm high overall.	inscription : engraved : : : Un. Ass. Congregation Rousay 1834	Kinniburgh	Scotland
881			A coconut shell that unusually is mounted in pewter to become a drinking vessel. (Silver examples are found in Brazil). A pewter disc is inset into the coconut with scratched initials which are now illegible. The lip is mounted with pewter with a scalloped edge.	inscription : : disc : initials (now illegible) :		
885		1580 to 1600	Elizabethan wine cup; with cast decoration; identical to one in WCOP Collection (in whose Supplementary Catalogue it appears as Item 312, described by Richard Munday as 'Child's cup, height 1 1/2', diameter across lip 1 7/8'. Band of relief casting 3/4' wide with grape vine motif round bowl 1580-1600'; the handle has a rope decoration; the cast decoration shows flowers, running vines and grapes. David Moulson has assessed this piece as being Dutch.			Netherlands & Holland
886		1675 to 1700	A Monteith; 17' diameter, height 10'; with simple ring handles and a small foot rim; under the base a crowned X and two faint squares of a hallmark; probably English, last quarter of seventeenth century.	touch : stamp : base : crown : X, hallmark : stamp : base :		England (?)
887		1700 to 1720	A toy watch; gold and black patination (excavated from Thames); Roman numerals, hands missing, simple suspension ring; no mark; circa 1700-1720.			England
887a		1700	A transitional York flagon; circa 1700; essentially in acorn format with slightly tapering drum and pot-bellied foot; the domed cover with a finial and a bold tulip leaf thumbpiece; no visible maker's mark; the bulbous base engraved with IHS motif within a flaming circle/sun and inscribed 'Deo et Ecclesiae de Kirkby Stephen SS Com Westmoreland/1727'; the foot rim resembles a James I flagon; spouted, the lip extends around the body.	motif : engraved : body : flaming circle/sun : IHS, inscription : engraved : body : : Deo et Ecclesiae de Kirkby Stephen SS Com Westmoreland/1727		England & York

The Variety - first sight for me of a coconut shell mounted in Pewter Elizabethan wine cup (?) accepted that David Moulson considers this Dutch but apparently did not question the age.

Interesting transitional York Flagon used in Kirkby Stephen Westmoreland

Alex tells me -

I was a shareholder of nothing! Bunge (The Conglomerate) was originally a strictly private company owned by around 100 families who had all inherited from the founders. I was just a worker...well paid and well rewarded with good bonuses. Today it is quoted on the New York stock exchange and is in a dominant position in key commodity markets.

This was a time of the “dirty war” between Argentinian Armed Forces and whoever they thought were “terrorists” in which 5 of Alex’s co-directors were murdered.

Alex never had to drive – he had drivers – glad of the job. He recounts that one of his colleagues was shot dead – and henceforward for a number of years he had a bodyguard.

In difficult times the headquarters was thought better to be moved to Brazil where this conglomerate had huge interests. Thus after Alex had been with this business for 14 years in Argentina the Conglomerate moved headquarters to Brazil, and Alex and family with it.

This Conglomerate was still dominated by descendants and wider original families all who thought keenly of their entitlements. Alex and a few like-minded directors selected a German businessman to sort matters out.

He writes -

It started as a family company. I began with its Argentine flour milling division which then was responsible for the Australian flour milling activities. I went to Australia with the Argentine company's General Manager who spoke little English and ended up running it with his son-in-law whose father was then the Group President. We built up the activities with national steel distribution and developed the world's largest pig farm.

This German business man closed down all operations in Peru and he closed down much of the business in Argentina. He sold most of the Australian operations he brought in fresh non-family blood to direct the business.

Disk 3. Sheet 28: 44.0863 - 44.0867



- | | | | | |
|-----|---|---|--|----------|
| 863 | | A Scottish quaiich; stamped with the ownership triad initials : stamp ::: TJD TJD; diameter 10 cm. | | Scotland |
| 864 | | A 15' diameter charger; with wriggled decoration of a seated lion surrounded by trailing foliage; indistinct touch. | touch : stamp ::: | |
| 865 | | A complete chess set, all in pewter, one half of the set darkened using nitric acid. | | |
| 866 | A communion 1834 set by Kiniburgh of Edinburgh engraved Un Asso. Congregation . Rousay. 1834" | One of seven unmarked chalices inscribed 'Un. Ass. Congregation Rousay 1834', Part of a 13 piece communion set. | inscription : engraved ::: Un. Ass. Congregation Rousay 1834 | Scotland |
| 867 | 1834 | Part of a 13 piece communion set: one of seven unmarked chalices inscribed 'Un. Ass. Congregation Rousay 1834', 22 cm high; | inscription : engraved ::: Un. Ass. Congregation Rousay 1834 | Scotland |

A chess set! One side acid darkened – age not suggested

Alex was asked to stay on – but after 34 years always as an employee and then director. With their children not wanting to live in Brazil – Alex resigned and he and Patricia moved to Barcelona.

Simple for listeners today then – 14 years Argentina – 20 years Brazil and now 20 years retired in Barcelona.

He once said to me that asking awkward questions at a South American AGM was like attempted suicide. Being as they were close to the top of the Social and Business Communities - clearly Alex could communicate well with all – as he survived! (Whilst even headmasters they knew were shot.)

- Consider myself and most of the members sat here today and the provincial, protected, and comfortably peaceful lives so many of us have led. We have been a part of a totally different society to Alex with totally different manners and totally different work experience. Consider me - my family name has been in the same area within 30 miles for 500 years and likely longer!

Thus we need to move as to why Alex took any interest in Old British Pewter. He comments –

Argentina was not a country for British antique pewter though I did find one shop offering an 18 piece dinner service. The price was crazy so I passed - noting the NR hallmark which of course was the famous forger Richard Neate

Well now we know what some would tell us this was unlikely to be Richard Neate - but it was likely to be early 20th century repro pewterware.

Another spur to his interest is explained as –

When the Group moved to Brazil in 1976 I went with it and I came into contact with John Somers who had selected the State of Minas Gerais to set up his pewter factory. We became great friends and he used to stay with us when visiting his Sao Paulo shop.

Elsewhere there is vast detail (the only collected source) of the life and times of John Somers (see www.pewterbank.com) – a remarkable producer of serious

craft work “antique” style pewterware – though always honestly marked by him.

Disk 3. Sheet 27; 44.0853 - 44.0861.01

no images: 44.0854 - 44.0858



44/853



44/859



44.0860.01



44/860a



44/861



44/861.1



853	2nd to 4th century	A Romano-British dish; 19 1/2' diameter, 1 1/4' deep; the 2' wide rim indented and beaded; in the well centre there is a raised circle with a finely decorated surround, within which is another circle with six decorated flanges, perhaps denoting the sun (as an object of worship); the intricate decoration suggests an important use; now with nature's gilding.	decoration : engraved : well : six-flanged circle :	England & Europe	
859	up to 1399	A rare spoon, no later than fourteenth century; knob shows a figure with fretted skirt, its hands resting on its waist; on each side the stem is fully decorated with crosses and cross hatching; at the top of the bowl a maker's mark of unusual form with a figure similar to those on fourteenth century ampullae. Excavated - perfect condition.		England	
860a	up to 1709	Large two handled cup; on raised foot; wriggle worked coat-of-arms incorporating shamrocks, with the date 1709 on side of body; touch mark of an Irish harp.	touch : stamp :: harp ;, decoration : wriggle work : body side : coat-of-arms : 1709	Ireland	
861	1687	A very important Charles II pewter charger; inscribed as a gift from Henry Capell (probably Sir Henry Capel, d.1696, second son of Arthur, 1st Lord Capel of Hadham, a prominent Royalist) to Sir John Lawrence 1687; decorated with the royalist emblems of oak branches and acorns and the Sun in Splendour; the ownership triad L over IE; diameter 22 1/4"; possibly bearing the touch of Robert G... (OP 5628). Sir John Lawrence was Lord Mayor of London at the time of the Great Plague of 1665	initials : engraved : rim :: LIE, Henry Capell inscription : engraved : well :: GIFT OF HENRY CAPELL TO JOHN LAWRENCE 1687, touch mark :: rim : touch of Robert G... (possibly) :	England	
861a	A half-pint spouted Glasgow measure, circa 1850.	1850	A spouted, truncated cone, half-pint measure with two Glasgow verification marks, single curved handle with pronounced thumb-rest.	inscription : : : two Glasgow verification marks ; , inscription : : : : WDMFEW [?] GLASGOW	& Glasgow & Scotland &

A rare spoon from c1390

A Romano- British Dish from c 3rd century in perhaps good condition

861 – the plate was not questioned in 1996 and perhaps should have been.

Again variety

Alex writes –

You might like to note that the collection began in Buenos Aires in the early Sixties where it was fashionable to have silver sous plats instead of place mats. Patricia wanted to join this fashion but I said I was starting my career and could not afford it. She suggested pewter as an alternative but all Buenos Aires had to offer were Jewish family items that had moved from Europe with their owners as they sought to avoid persecution. This was the beginning of the Jewish collection that over the years I expanded by buying at auction. It is now regarded as the world's leading private Jewish collection and is on permanent display at Barcelona's 12 century synagogue said to be the oldest surviving in Europe. Curiously many Americans and Israelis come specially to see it – and try to buy it

About Australia he has little to say. He combed the antique shops but found nothing but an over-priced set of Scottish 1820 balusters, There was nothing except the occasional beer tankard. This and the fondness the Australians have for swilling this liquid down he says perhaps explains why local collectors are forced to go in for verification marks. Half of the Carvick Webster Collection was donated to the Sydney Museum. The gift was highly publicised at the time. Agnes Carvick Webster (dec'd 1966) had said it was in thanks for all the happy years she had spent there. Sadly the collection has been hidden away in store for many years and letters from the Society of Australian Pewter Collectors are no longer acknowledged according to Geoff Lock.

A great friend was the late John Russell. He had a notable collection that Alex helped him form. When he sold his country estate; what was essentially a private collection was consigned to Bonhams at Chester. He went to the sale with John. Much was unsold. He bought a 17th. Century bowl that had been used as a water dish for Barney, John's St Bernard. On his death his wife Neola decided to downsize. She was thinking of giving the residual pewter to a charity shop or the like but I persuaded her to distribute it amongst the family rather than give it away at a local auction. So ended another great Australian collection. The other important private collection (Carvick-Webster?) gave concern to the Society of Pewter Collectors such as Geoff Lock and J. H. Myrtle who saw quite a lot of it before it was hidden away. Sadly Alex thinks that

Australia is not a welcoming home for good antique pewter. (Though collectors such as Jane Russell, Robert Watch, Hep Myrtle Don Todd Len Evans and Graham Geddes had bought some good pieces and others from the UK. Indeed in Adelaide today there are some specialist collectors with interesting collections enjoying their old pewter.)

Disk 3. Sheet 24; 44.0820 - 44.0826
no image : 44.0821, 44.0824,



44/820



44/822



N823



44/825



44/826



820	1720	A 'pilgrim flask' or wine bottle with the touch of Edward Nash (OP 3347); circa 1720.	touch : stamp :::	Edward Nash England
822	1700	A circular trencher salt with incised rings around the body; 2 7/8' max. diameter, 1 7/8' high; circa 1700.		
823	1700	A ten-sided plated, 9 1/2' across; with a bird engraved on the front rim; the touch of Jonas Durand, circa 1700, on the reverse with a Cotterell guarantee sticker.	touch : stamp : reverse ::, decoration : engraved : front rim : bird :	Jonas Durand
825	1660	A rare ball-knopped candlestick; height 6 1/4' with the unusual feature of ribbed decoration; on the base the ownership triad of PSE; circa 1660.	ownership triad : stamp : base ::	
826	1500	A rare Thames excavated bowl of 10 9/10' diameter and 3/4' rim with a strengthening bead behind; it is 2' deep with a large bumpy bottom; no marks but on the back of the rim the Lombardic ownership initials of I.E.; one of the largest pieces from the Thames in recent years; circa 1500.	ownership initials :: reverse rim :: IE	

Kindly shared with me various ball knopped candlestick photos.

One way open to Alex was collecting old pewter by making bids from South America against Sothebys catalogue offerings. These were despatched to the Bunge Conglomerate's London Offices. They were stored in the cellars in the parcels as they arrived. Alex looked and checked on his occasional visits from South America. His financial means, intellectual interest in and appetite for old pewter meant the collection grew rapidly.

He appears to have been unconcerned by condition unless repairs were absolutely essential. He took a real interest from 1976 and he met Munday in the early 1980s. For a few years it was Mr Munday and Mr Neish before in the mid 80s it became Alex and Richard (Dick).

Alex recalls that on entering the Munday shop and introducing himself Munday did a little jig (from his theatrical chorus revue days?) at the amazement of meeting this bidder who Munday and the others (Casimir?) had thought did not really exist and was simply the auctioneer putting unsold items to one side. Condition had become important and this buyer seemed unconcerned.

Alex writes –

Mundey was bidding for me in the 90s and up to the eve of his death. This stemmed from our first meeting when I went to his shop and introduced myself. At that time I was bidding off the book. Apparently on many occasions I had pipped him for very desirable pieces but no one knew who I was. Richard even suspected it was a name invented by a rival to frustrate him. He was really delighted to meet me and became my bidder. He stayed with us in Edinburgh on several occasions and would spend hours with my collection. On his last visit he said "Young man, you have done the impossible and surpassed the WCOP."



Thus to start with Alex purchases from the Sotheby's and other catalogues. Then with Mundey as his agent and clearly from other dealers such as Michael Kashden.

Disk 3. Sheet 22; 44.0798 - 44.0808

no images : 44.0800 - 44.0804, 44.0807



N798

44/799



44/805

44/805



44/806



44/808

798	1694	One of a pair of broad rimmed plates of 9 5/8' diameter with multiple reeding, by John Elderton of London (OP 1531); his hallmarks on the 1 5/8' rim (33%) and touch dated 1694 on the reverse; the back is hammered all over and this shows through to the rims but not the thicker well; owner's initials IK scratched on the back.	touch : stamp : rim reverse :: 1694, John Elderton hallmarks : stamp : rim ::, owner's initials : scratched : back :: EK	England & London
799	1740	An excavated tavern pot engraved 'Burton Rowlands at ye Hen 4 Chickens Coxes Key'; large crowned WR stamp; straight sided with a narrow fillet one third of the way up; the handle with a curved tongue purchase, engraved with ownership triad BRE, ending with ball terminal; in the base, touch PM, possibly Philip Matthews (OP 3135); circa 1740. Height 11.25 cm (4.5 ins)	inscription : engraved : side :: Burton Reynolds at ye Hen 4 Chickens Coxes Key, ownership triad : engraved : handle :: BRE, touch : stamp : base :: PM	Phillip Matthews England
805	1820	An English tobacco jar; circa 1820; the body 3' deep with a 5' diameter; contains the original lead presser; the finial of the lid is formed of an African head.		England
806	1720	A 10 3/4' diameter mazarine; one of the earliest known examples with a unique heart and crown pierced design; unusual in that it carries both the touch of Richard Grunwin (OP 2040) of 1720 and on the reverse the arms of its original owners, the Jennings family.	touch : stamp ::, mark :: reverse : Richard arms ;, decoration : pierced :: heart & crown :	
808	2nd to 4th century	A Romano-British octagonal bowl, of the 2nd-4th century; height 3', diameter 5 3/4', with turning rings visible in the bowl; excavated near Bath.		Europe & England

Roman octagonal bowl was rather like the part scrap excavated relic I brought to the Spring 2015 meeting

He tells me –

It is around 20 years since I stepped down as a Director of Bunge. Since then it has done many wise things like selling off Argentina, Peru and Venezuela and exiting the food industry in Brazil to concentrate on fertilisers and phosphate mining. Prudent purchases have seen it become the leading soya power in North and South America. It has also set up crushing plants in India and China. I would not have gone along with this in my time as a director but the world has changed. Bunge is no longer a secretive private company owned by a handful of families. These now hold less than 12%. The public company is aggressive

Patricia Neish MBE (56 years outside of the UK Argentina brazil and Barcelona)

Alex writes -

Those in the know say MBE stands for - Married to a Bastard Escoces.
(Scotsman)

It was awarded for services to education and charitable work. Originally we were sent to Brazil for 2 years. Our children attended the local British School and there were plenty of deficiencies and Patricia said if we stay on she would do something about that place. A P.T.A. was founded and after a couple of years she was invited to sit on the school board. Together with the bursar she had plans drawn up and had the place reconfigured, that sent change in motion and she spent a total of 14 years participating in the re-build and reorganisation. Today it is one of the best international schools in South America producing outstanding academic results.

Alex was paid bonuses which were very considerable by British Standards at the time. Thus he had really large sums of money available for his hobby without inconveniencing his family life. His interest was to have the best collection known. He relied a great deal on Munday and others to guide him to that.

His purchase of Munday's remaining collection and papers was a demonstration of the strengths Alex had in completing a deal fairly and quickly. Though we must conclude it was fair to him - if he thought it was - as he was in the driving seat throughout.



Disk 3. Sheet 20; 44.0778 - 44.0786

no image for 44.07780 - 44.0784



778	1800	A scale plate of 15' diameter; circa 1800; with single reeded rim, perhaps by Samuel Cocks; Cotterell star label on reverse.	Samuel Cocks	England
779	1800 to 1825	An early nineteenth century Britannia metal inkwell of unusual design, probably made in Sheffield. (Previously described as a very unusual ink well; circa 1800; Scottish.)		Sheffield & England
785	1770	A baluster form jar with integral three-legged stand over neck/openwork neck raised on three struts; a wine bottle strainer? English, circa 1770.		England
786	1900 to 1910	A Liberty art nouveau jug; a coloured stone inset into the body.	producer	England

The coloured stone looks in the photo like an enamel.

785 is a bottle measure and could be any year up to 1910 but is unlikely to be 1770. Page chosen for variety shown

The collection today is over 1200 pieces.

This collection has had ten years on loan to Harvard House, Stratford on Avon - the Shakespeare Birthday Trust. The loan element was not publicised thus many thought it belonged to Harvard House. I am unsure if copyright law allows that a publisher who thinks and does his best - then all is well with his Copyright world – or if a publisher has a duty to make absolutely sure and certain of his permissions? No doubt the Society has expertise on such matters.

The Shakespeare Birthday Trust changing director and deciding Old Pewter was irrelevant to Shakespeare - decided to be without the collection. All the old photographs vanished - as did some of the exhibits (so Alex tells me), though it is a mystery as to quite where they vanished, and it might have been in transit.

Alex found a new home for his collection at the Smith Art gallery and Museum at Stirling where it presently is and where it welcomes visitors.

Alex's view is not shared by many others (let me quote you Jan Gadd writing directly to him) – most collectors appear to think they are entitled to squirrel their nuts and keep them to themselves today – even in the 1920s the founders of the Society saw good reason for visits to other collections and communications were far more difficult then.

Enough then of a background to a collection let us move on to some particular pieces in the collection that might encourage you to go and see it.

Alex writes -

My simple objective was to keep as much as possible of the best of British pewter in the UK and have it on permanent display. Harvard House seemed to meet these requirements but failed when the Shakespeare Trust entered into financial crisis and abandoned its Parliamentary responsibilities. Now, as you know, Stirling has accepted the burden

The Pewter Society never seemed to view the collection as relevant. As far as I know the Society made no financial donation either to Stratford or Stirling.

Disk 3. Sheet 19; 44.0767 - 44.0777

no image for 44.0766,
44.0769, 44.0770,
44.0772 - 44.0775



767	Three nineteenth century 2-handled loving cups and some 1-handled cups ranging in date from the late seventeenth century to the early nineteenth century. (Caption for new case 6 drawer 8).	1666 to 1699	A Great Goddard; excavated at Custom House, Thames; capacity half pint Old English Wine Standard; height 6.2 cm, diameter at lip 9.5 cm; handle of a serpent swallowing another serpent; covered in gilt and mauve; inside base the touch of I P/R/B (second initial unclear) in an oblong shape; at top of foot a hairline crack and a small piece out of the rim; late seventeenth century, (Neish catalogue card suggested perhaps 100 years earlier).	touch : stamp : base : oblong with initials IP IR or IB :	I. P	England
768		1690	A fine Thames excavated taperstick of the late seventeenth century; trumpet base, small drip tray, two bands incised in body; no mark; circa 1690; height 8.8 cm, base diameter 6.6 cm.			England
771		1700	A triple-reeded rim bowl, circa 1700, with raised boss; on the rim 2 sets of ownership initials and the touch of IS with fleur de lys and rose obverse; diameter 13 7/8".	touch : stamp :: fleur de lys and rose : IS, ownership mark :: rim ::	I. S	England
776		1400 to 1450	A saucer; circa 1400-1450; with a bouge that slopes into the centre and ends with a bumpy bottom; on the narrow rim which is 1 inch above the base there is a crowned hammer mark; hammered all over including the rim which has on the back a strengthening rim; engraved on the back a number 1 and a shielded shape that may be a merchant's mark; diameter 7 inches; nature's gilding and mauve.	mark : stamp : rim : crowned hammer ; mark : engraved : back :: 1, merchant's mark (?) :: back : shielded :		
776a	An Old English ale standard quart tankard by William Eddon, early eighteenth century, with domed lid and closed chair thimblepiece.	1700 to 1725	An Old English standard quart dome-lidded tankard with a closed chair thumbpiece, early eighteenth century. (Previously recorded as George II, circa 1730); with cylindrical body on moulded base, the scrolled handle with shaped thumbpiece to the domed cover.	touch mark : inside base :: mark of William Eddon : William Eddon :		England & London
777	A rare style of English porringer circa 1650.	1650	An early porringer; straight sided with a raised boss in the base centre and with openwork ear with the (owner's?) initial A on the front; on the back the maker's mark TC; bowl diameter 12.2 cm and 17.7 cm across ear; excavated in the Thames; nature's gilding; in the base a V & A (?); a small melted area reflects probably the fire of London; circa 1640.	maker's mark : stamp : under raised central portion of base : : TC, inscription : stamped : ear : gothic style A : A	T. C	England

A rare Great Goddard c1690 of half pint OEWS a rare saucer
with a sloping booge c1450

Gadd thought it his right to sit back and wait for the Collection to be sold over several years at auction so he and other PS members could cherry pick. This was never my intention. Where we agreed was the need for a catalogue but as you know the PS has been working on this for 11 years.

Jan Gadd wrote in 2011 (Friday, November 25, 2011 10:38 PM – a good time of night for a Gadd email) to Alex Neish by email,

(The various insults to existing and past members and extraneous matters I have deleted there is enough remaining for our interest)

Dear Alex,

I admire you for actually coming back at all (AND several times!) on my nasty missile. As a compliment of sorts I have spent some time on the below.

Here is another batch of serious personal insults for you to contemplate:

Michael Boorer told us all that a pewter collection is for the owner to research and enjoy during his lifetime. His (and my) idea would then be for his and my collection to be sold on auction for later generations to enjoy.

Your tactics over the years have been 'hoarding' and the money you were willing to spend more than matched the money serious collectors/researchers could afford or thought realistic. You were not even interested in inspecting the items you bought through various minders, before or after, which is of course the very worst kind of hoarding. Yes, I know that very well for the simple reason that I bought items for you on our own auctions which you instructed me to send straight to Stratford on Avon.

Things then went very wrong - which I predicted long before your collection eventually arrived in Stratford which some people will remember. NO MUSEUM in the world will undertake to have ANYTHING on permanent display as you now know. A new curator or museum director will impress her/his taste/speciality/will on what goes on show, as you know. Your collection was then shipped wholesale to Stirling and now it would appear that somebody up there dug a big hole in the ground to temporarily hold it all - ho-ho!

Your monumental mistake

*BEFORE ALL THIS you should of course have had a **good catalogue** of your collection commissioned and PRINTED - but no! I remember that **much later** instead a PS 'Neish committee' was created with lots of PS people involved and I think Stratford photographs were taken? I always stay shy of such 'committee' thingies for the simple reason that they NEVER get their fingers out - endless object discussions about this and that but never realizing that such discussions could be performed over each detail of each and every object photograph! (Remember that a committee was asked to design a horse and finished up with the camel.)*

I don't know what happened next, but I still haven't seen a Neish collection PRINTED catalogue (shame on you! Alex) which of course is much more important than 'pewter in a deep hole dug somewhere in Scotland' holding also lots of English pewter.

***You never spent any money at all on such a catalogue which would have cost you the price of two flat lidded tankards before all the kafuffle - but would have made your collection immortal!!!** What on earth were you thinking about - **mean** is a word, of course but I cannot apply it here because of the money you spent on pewter - I much rather await a response from you!? We (the PS) have no obligation whatsoever to print your list of objects - although a Neish budget would perhaps find someone with the right attitude and skills?*

NOW

*I have learnt from you or somebody else that you are still the **independent owner of your collection** which I read to mean that you are at liberty to do what you want with your collection - please correct me if I screwed this one up! Having failed several museum attempts over many years, you may now consider the much better option of actually passing on objects from your beautiful but not inherited collection to a next generation. I could help you with this after having had sight of a list of objects (OR from a catalogue which may be just around the corner?)*

*Your collection would have to be **sold and spread around two auction houses, Christies and Bonhams** (Sothebys are no longer interested in pewter) and **spread over a time span of some 8-10 years in order not to disrupt the price level!***

Think about it carefully Alex - not necessarily overnight!

*Best wishes,
Jan*

722.2	Nineteen Romano-British coins, struck some time between 263 and 268 AD	about 263 to 268	Nineteen Romano-British coins; one bronze, the rest of silvered bronze; all of Emperor Gallienus 263-268 AD; the coins (Antonius) washed in silver.
723	A pewter bottle measure; English, late eighteenth-century	1766 to 1800	A bottle measure; with an integral support/trivet ; English, late eighteenth-century.
724	A York charger, made by John Harrison of York, first half eighteenth-century	about 1712 to 1750	A large plain York charger; pewter; first half eighteenth-century; 46.4 cm (18 1/4 inches) diameter; stamped on the rim AW, the touch of John Harrison (OP 2162).
725	A pewter beaker with wriggle work decoration; English, about 1650-70	1650 to 1670	A pewter beaker with wriggle work decoration; English, circa 1650-70; capacity 1/2 pint old English ale standard (approximately 10 fluid ounces); height 11.1 cm (4 3/8 inches); no maker's mark.
726	A pilgrim's badge with the bust of St Thomas Becket, late fourteenth-century	1366 to 1399	A pewter pilgrim's badge showing the bust of St Thomas Becket and his robes, these and the mitre with cast decoration; at the foot 'Thomas' inscribed in Lombardic lettering; on the back is an intact pin; St Thomas Becket's face is, unusually, not flat but curved out in relief; height 8.3 cm (3.25 inches), late fourteenth century.

From 265 to 1380 to 1800 – and very fine relief cast decoration of the pilgrim's badge showing Thomas Beckett

Disk 3. Sheet 14; 44.0722.2.19 - 44.0722.2.12



44.0722.2.19

front

back



44/723



44/724



44/725



44/726

If we know more about the collector then certain aspects of collections can be explained.

For example **Antonio de Navarro** in the early 1900s was exceptionally rich, very catholic, and very certain of the correctness of his own views. Thus all factors were catered for by his suppliers. Expensive, newly created in a silver style and antiqued, candlesticks (for example) are then to be expected.

A B Yeates in the first quarter of the 20th century – a meticulous and careful architect who was competitive to acquire the best and scarcest pieces.

Richard Munday whose private collection in 1989 (where it can be isolated from his remaining small numbers of dealing stock) shows what after 66 years dealing he thought was - right.

With **Alex Neish** we have a man often unable to examine the pieces he was bidding for (though he says that always others he trusted did so for him). We have a wealthy Scotsman living and working in South America with a deep love of old British and Jewish pewter - who was not much influenced by other collectors - or the market he was buying in - and did not buy with any intention of later selling or dealing. Renovation and not maintenance might interest him – condition was not always a most important factor. He seems to have preferred many pieces to remain – as found – or as bought.

Accumulating thousands of pieces many of which he had only passing acquaintance with he eventually decided to share a large part of his collection, with everyone interested, by loaning it to The Shakespeare Birthday Trust. **BELOW**

Showing a varied range of old pewter dates from 1500 to 1800. Examples from a wide range of badges and a rare Tavern Mug said to be from around 1700.

652	Six early plates, bowls and a spice dish with bossed centres dating from the fifteenth to seventeenth centuries.	1500	A rare sixteenth-century deep narrow-rimmed bowl with bumpy centre; diameter 19.2 cm (7 1/2 inches), rim 2.1 cm (3/4 inch) stamped with crowned hammer; English circa 1500; excavated, with nature's gilding.	: stamp : rim : crowned hammer :
661			Rare Scottish badge or pendant; with arms of Edinburgh Incorporation of Hammermen, surrounded by thistle and roses.	
662		up to 1678	Late seventeenth/early eighteenth-century rare Scottish beggar badge, oval; from Montrose, 'No. 8/MONTROSE/BEGGING POOR/1678'; flower within a shield. Oval 11.1 cm (4 3/8 inches) x 8.1 cm (3 1/4 inches)	inscription :: face : flower within heart : No. 8/MONTROSE/BEGGING POOR/1678, inscription :: reverse :: G SCOTT
663			Rare Scottish beggar badge; stamped 'Dysart No. 2 Poor'.	inscription : stamped : face :: Dysart No. 2 Poor
663a		1675 to 1725	Rare Scottish beggar badge late seventeenth/early eighteenth century; stamped 'Dysart No. 15 Poor'. Rectangular 7 cm (2 3/4 inches) x 4.6 cm (1 3/4 inches).	inscription : stamped : face :: Dysart No. 15 Poor
664		1700	A rare tavern mug, circa 1700; of tall tapering form, with 2 raised fillets, the handle with a diamond terminal and crescent thumbpiece; stamped with triad ISM; indistinct touch in base.	triad : stamp ::: ISM, touch : stamp : base ::
665		1805	A footed bowl of sheet pewter; diameter 24.8 cm (9 3/4 inches), height 10.2 cm (4 inches) with the touch of Robert Whyte of Edinburgh, circa 1805.	touch : stamp :::

No Image
44.0653 - 44.0660

Disk 3. Sheet 4; 44.0652 - 44.0665



44/652



44/661



44/662



44/663.1



44/664



44/665

When a new curator considered it irrelevant to Shakespeare or Harvard House, after ten years, he moved his collection to Stirling and The Smith Museum where it is now.

The descriptions listed by the SBT of this collection in 1996 he tells me were assembled by – **the Curator Aidan Graham, David Moulson, and himself**, from Index cards - he had made concerning each piece purchased (very often being the seller's description (often an auction house or dealer of note). We should all remember that more information has come to light since 1996 and that these descriptions are what was best thought then – say 40 years ago (from 1976).

With the Pewter Society after 11 years thinking of a catalogue perhaps producing some record of the Neish Collection albeit on the PS website you might wonder the purpose of my talk today.

I have received no help whatsoever from our Society in the preparation of this talk. I have not had any help from any who spent those 11 years or part of them intending to produce a 'catalogue'.

I hope to have shown you many pieces that might not feature on the PS website or indeed be on show in Stirling as there are just too many of them. (Some 1200+ pieces listed and more besides). These are new photos commissioned and authorised for me to use here by Alex Neish in 2015. There is a terrific variety in this collection.

Strangely in some cases there are descriptions but no such pieces traced at Stirling. This is the second time Alex had all the collection professionally photographed the first set being taken by James Johnson for Stratford. Like a good number of the pieces - this set of photos also vanished.

Anyway let us consider what exists and can today be seen. I show a selection of photos, with 1996 descriptions following, - anyone is

welcome to ask for the 1996 description of any item I do not mention – or to interrupt and comment.

Anyone is welcome to offer correction to the 1996 descriptions.

I will simply mention why I included a page in this talk; out of the 300!!!! Such pages that have been assembled by Alex and his very small team – of willing helpers.

1022	1651	A wide-rimmed, 21.25 cm (8 1/2 ins) diameter plate by AL (perhaps Adam Langley) which is dated 1651 in the touch.	AL
1025	1700 to 1750	An English chalice, dating from the first half of the eighteenth century, on a knopped stem, the cup diameter 8.75 cm (3.5 ins). Height 18.75 cm (7.5 ins).	
1027		Medallion (a beggar's badge?) with sailing ship design, number 13- Kirkwall, Orkney. Lead.	
1028	18th century	Nipple protector; eighteenth century: disk with central protrusion pierced with holes.	

The nipple protector was recently shown on a Television programme introduced by Griff Rhys Jones from The Stirling Museum where in one part the contestants had to choose an explanation for the use of a mysterious item.

This was said to be used in its time by wet nurses

DISC 4 REDO SHEET 1 44120-122,125,127, 128

No Images 123,124,126



44/1020



44/1022



44/1025



44/1028



44/1027

1020

One of two deep bowls, of 23.1 cm (9 1/4 ins) diameter, made by Thomas Phillips.

Thomas Phillips

Disk 3. Sheet 33; 44.0891.01 - 44.0893.1



44.0891.01



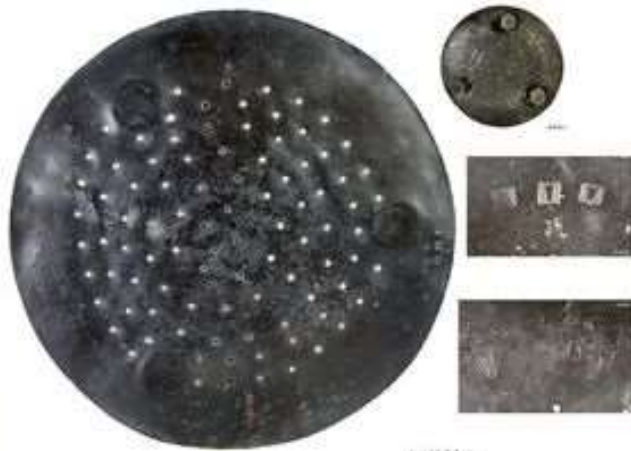
44.0892



44/892.1



44/893



44/893.1

891a	1690	Dome lidded tankard; extremely fine; the vertical thumbpiece and handle terminal perhaps indicating a Wigan origin; height 6"; in the base the touch of AB over a tiny bird (unrecorded); circa 1690.	touch : stamp : base : bird : AB	
892	1879 to 1896	Probably a cigar holder. English, nineteenth century. Three sealed octagonal containers with flat tops and bottoms, joined together in a row at abutting faces. a simple hollow C-shaped handle is attached to the back of the centre container, rising a little above the top surface. Set into the top of each container are six fixed tubes, each with rounded bottom end and a slight flange at the top resting on the top surface of the container. All visible vertical faces of the containers are decorated with a wiggled top and bottom band and with triangular markings along the vertical edges. The three containers are inscribed '2', '3' and '4' respectively on their front faces. In addition, the two end containers each have a floral engraving in two panels and an eight-pointed star engraving in two others (two of these decorated panels on each end container facing the rear of the device). On the top surface, there is a ring of wriggle-like decoration around each tube and a wiggled line around the periphery of each top face. The two solder joints between adjacent containers are disguised (except on the under surface) by lines of decoration.	maker's marks : : top centre of each container : : J. Petfield Wicker Sheffield	& Wicker & Sheffield & Yorkshire & UK
892a	15th century	Fish shaped whistle; probably unique; fifteenth century; 4.5 cm long; excavated, still working condition.		
893	1700	An octagonal trencher salt; circa 1700; 3 1/2' x 2 5/8'.		England
893a		Mazarine; raised on feet.		

Interesting fish shaped whistle said to be 15th C



44.0894 box 49



44/895



44/896



44/897



44/898



44/899

894	1850 to 1910	A quart West Country measure; with Victorian and Edwardian verification marks inside lip; latter half 19th/early 20th century.	marks : stamp : lip :: VR6 & ER576 producer	England & West Country
895		Scottish triple domed flagon; engraved "Wine Company of Scotland".	inscription : engraved : body :: Wine Company of Scotland	Scotland
896		Circular inkwell (plus feather quill).		
897	15th century	A fifteenth century lover's token or badge; depicting a flowering plant with three leaves and four blooms.		
898	12th century	Part of a 12/thirteenth century pilgrim's candlestick; lead; the central column of Y-shape with each of the 6 sides decorated; a standing figure holds on to the column; the saucer-shaped drip tray with same decoration has a central pricket of either bronze or iron; the base section probably later.		
899		A fine deep dish; on the reverse the touch of either OP 5639 or OP 6047; on the rim the ownership triad of I over R(?) and A.	ownership triad :: rim :: IRA	

Most unusual 12thC pilgrim's candlestick – and my first sight of a "lover's token"

Disk 3. Sheet 35; 44.0900 - 44.0903.01



44/900



44/900/1



44/901



44/9021



44/903



44/903.1

900		1600	An Elizabethan beaker; with three bands of cast decoration; the upper and lower with a running vine decoration; the centre one of classical style; there is fine turning under the base with a crowned rose touch mark; capacity an ale half gill so is probably intended for ale rather than wine; very rare.	touch mark : stamp : base : crowned rose :	
900a	Tall flat-lidded tankard circa 1680.	1680	Flat-lidded flagon; Stuart period (circa 1680). The wide rimmed lid has two double incised lines and a denticulated (featuring decorative, small tooth-like projections) lip carrying the triad DTD, the body with two bands of reeding. Thumbpiece features twin lovebirds; boot heel terminal.	owner's mark : inscription : front : : DTD [previously recorded as D'YD], inscription : : base : : Rose Manor TR [previously recorded as TBJ] 1697, touch : : back of handle : undecipherable touch mark in beaded circle :	
901	A child's porringer, circa 1680.	1680	A child's porringer; circa 1680; the bowl has a bossed centre; the ear is fine and unusual (not recorded by Peale).	maker's mark (possible) : : back of ear : Possibly of Jonathan Ingles (OP2525) : II	
902a			'Medieval'		England
903	A rare deep porringer with 'old English' style of ear circa 1675.	1675	Deep porringer, crowned rose mark on back of ear; label on reverse reads 'A RARE PORRINGER WITH VERY DEEP BOWL CIRCA 1675 There is one very similar in the collection of the Pewterer's company'; 12.9 cm diameter across ear; ear very similar to 860/464 but much cruder.	mark : stamp : ear back : : crowned rose	
903a			Extremely rare thistle measure.		Scotland

No idea what 902a or 9021 is – said to be “ medieval ”

Deep porringer c1675

Elizabethan Beaker c 1600. Running vine decoration likely English style. – ale half gill – very rare

Rare Thistle measure c 1850?



911a	1680	A rare toy candlestick, circa 1680, the unusual trumpet base with round drip tray and reeded stem; nature's gilding and W.W. touch mark.	touch : stamped :: W.W.	W.W
912	1588	A large filigree spear top, with the standing figure of an Elizabethan soldier in the centre; the figure broken off at the knees; the socket separated from the head and the piece between missing; designed to be set on a pole for processions; circa 5'. Excavated and rare.		England
912a	1375 to 1450	A medieval English domestic pewter candlestick; the knob not evolved beyond a fillet. Dating from around the late 14th to mid fifteenth century. A merchant's mark has been inscribed on the base. According to Neish, probably the earliest English domestic pewter candlestick. Moulson describes it as follows - 'The base is a low truncated cone with no embellishment to the sides, and the stem bears only a rudimentary shaping where a knob would usually be. Stem and base were cast separately and then joined together.'		England
913	Muffineer, late eighteenth century, used for putting sugar or spices on cakes. 1775 to 1779	A dredger, or muffineer (for spicing muffins); with slip-on, pierced lid and grooved strap handle, cylindrical body. the handle with cast ribs; no marks; late eighteenth century. Very unusual in pewter.		England
914		One of a pair of royal portrait spoons; George I; cast on the reverse of the handle 'RE' and 'ER' which are unexplained. 8 3/4'. Rare. One of a pair with 915.	mark : cast : reverse :: ER & RE	England

912 very unusual processional spear top c1588

Disk 3. Sheet 40; 44.0920 - 44.0923



photo: 44.0921



920		Miniature two-eared porringer; cast decoration in bowl.	England
921	14th century	Badge; rounded square shape; central cross; fourteenth century. Perhaps symbolising the Five Wounds of Christ.	England
922		Pilgrim badge or pendant fragment; decorative; shaped as a ship, hollow-cast. Probably originally had a pair of squirrels in the rigging.	England
923	1500 to 1530	Badge; Robed figure of Henry VI, holding orb and sceptre surmounted with fleur-de-lis, and standing on the lion of England; head missing; sixteenth century.	Windsor & England

928 in photo should read 921 Interesting badges

DISC 3 REDO SHEET 45 -440940A -0942

Note. 940 & 940.A



44/940A



44/940A



44/941



44/941



44/942



44/942

940a	Token; obv. 'T Henry', rev. 'North Leith'.	:: obverse :: T Henry, :: reverse :: North Leith	England
941	Token; 'Alex Galloway 107 West Bow - tea, spirits, wine and grocery'.	::: Alex Galloway 107 West Bow - Alex Galloway tea, spirits, wine and grocery	England
942	Trade token/weight; inscribed '1/2 ounce fine pewter'.	::: 1/2 ounce fine pewter	England

A few from a very large number of Tokens

DISC 3 SHEET 48 440949-952



44/949



44/949



44/950



44/950



44/951



44/952

949	Trade token; 'John Watson'.	∴ John Watson	England
950	Trade token; copper(?); 'ID'.	∴ ID	England
951			Canterbury & England
952	Flared vessel; bird-seed holder flat backed; with cast decorative bands; amorial on reverse with two fleur-de-lis.		England

Bird Seed Holder – not seen before

DISC 3 SHEET 49 440953-959



44/953



44/954



44/955



44/956



44/957



44/959



44/958

953		A hollow pilgrim staff end fitting; body shaped incompletely as a bird; faint crude cast decoration; constructed from two pieces soldered together; only the body remains of what was probably originally a peacock		England
954		A toy charger; with cast decoration.		England
955		Pilgrim badge; circular; head of Becket.		England
956		Unknown artefact; possibly a casket fitting; a flat plate shaped in the form of the front elevation of a casket; elaborate cast decoration; possibly a toy. No clear evidence of a pin or other attachment devices.		England
957		Pilgrim badge; an ear of wheat, crown on apex; very stylized.		England
958	1635	Saucer; dated touch in base, 'FM 1635'.	touch :: base :: FM 1635	England
959		Copper-alloy tri-form candlestick; on circular base with three short legs; height 4.7 cm.		England

Unusual range of pieces

DISC 3 SHEET 56 : 4409993 - 998



44/993



44/994



44/995



44/996



44/998



44/997



993		1640 to 1660	A broad rimmed saucer; the rim with incised reeded border stamped with the maker's 'hallmarks' (Peal M.P.M. 5542) and the ownership initials 'M.E.' (Mount Edgecumbe); circa 1640=1660.	hallmark : stamp : rim border :: ED, Edmund Dolbeare ownership initials : engraved : rim border :: M.E.	Ashburton
994			A Stuart broad rimmed saucer or patten; the rim with gadrooned raised border; a row of four 'hallmarks' on the rim face; circa 1660.	hallmark : stamp : rim border ::	
995	Small footed plate, circa 1640.	1640	A small footed plate, circa 1640, the flat top with a raised narrow reeded rim on an incurved foot with single reeded rim, indistinct mark in base (which Alex Neish and/or Sotheby's attributes to the maker I.N. (O.P.5812). Previously recorded as being a paten but David Moulson thinks too small to be a paten, as the bouge is too curved and there are no signs of wear from a flagon or chalice having stood upon it.	touch : stamp : base ::	England
996		1650	A fine Stuart wriggled work engraved chalice; the tapering body engraved overall with flower sprays, on a vase knopped stem with a central reeded band above a slightly domed foot engraved with wriggled radiating lines forming panels, indistinct unidentified touch of a bird and spray in a circle and ownership initials 'I.H.' under foot; seventeenth century. Repair at foot join.	ownership mark : engraved : base :: I.H.	England
997		1820	An unusual pear-shaped half-gill measure with a shell thumbpiece that joins the lid via a long triangle identical to those on bud balusters, the handle with a ball terminal like a double volute. Glasgow tree verification and on the front lip stamped GoWS. Beneath the thumbpiece a pimple. circa 1820.	: stamp : front lip :: G OF S	
998		1600 to 1700	A fine ball-knopped candlestick with a very wide band of gadrooning on the base (17 cm); the large ball has two incised lines and the sconce is wide. Immaculate condition and colour except for a minor hairline crack in the sconce. English circa seventeenth century.		England

Chosen to show variety

DISC 3 REDO SHEET 41-440924-0928



924	14th century	Badge; shaped as a cock on a hen, pecking its neck; fourteenth century.	England
925		Badge; zoomorphic design, fish/fowl combination.	England
926	mid to late 15th century	Walsingham pilgrim badge; square design; showing the annunciation - the Virgin Mary, archangel Gabriel and the lily-pot between; mid- to late-fifteenth century.	Walsingham & England
927	14th century	Pilgrim badge; depicts the Madonna and Child; fourteenth century.	England
928		An unpointed conical whistle; hollow; flat surfaces (base and apex) with flower motif, pierced through centre.	England

I had never seen a conical whistle before – and more interesting badges

DISC 4 REDO SHEET 46: 860.408-411, 415

No file 860.412,413,414



860/408



860/408



860/409



860/410



860/411



860/415

860/4 08	1690	A William and Mary lidded tankard; height to lip 5 inches; the domed lid with frontal extension; ram's horn thumbpiece and boot heel terminal; the touch TP flanking a chalice in a small beaded circle (OP 5857a); circa 1690. One bird engraved on front of cylinder.	touch : stamp :: chalice & beaded circle : TP	T. P	England	
860/4 09	1705	An 8 1/2" diameter wriggle-worked plate; engraved with a deer, an acorn, tulip, and foliage; almost certainly by John Hitchman of London, circa 1705, though the touch is worn away and only 'London' is legible.	decoration : engraved : top surface : deer & acorn & tulip & foliage ; touch : stamp :: London	John Hitchman	England & London	
860/4 10	1730	One of two Queen Anne wriggle-worked plates (described as Queen Anne on Neish card): engraved with tulips etc and the initials E and C; by John Hitchman, circa 1730 (OP 2340).	decoration : engraved : top surface : crown & tulips : EC	John Hitchman	England & London	
860/4 11	Single reeded plate with wrigglework tulip, circa 1730.	1730	One of two Queen Anne wriggle-worked plates (described as Queen Anne on Neish card): engraved with tulips etc and the initials E and C; by John Hitchman, circa 1730 (OP 2340).	decoration : engraved : top surface : crown & tulips : EC, touch : stamp ::	John Hitchman	England & London
860/4 15	16th century	A sixteenth century lidded flagon; height to tip 8"; the lid slightly convex with anti-wobble ledge and untouched roughness beneath; burnt-on an early hammerhead thumbpiece; inside the base a cast armorial medallion; the body cast in two halves and welded together, then lathe-turned; on the lid two examples of Chi Rho engraving, one of crossed swords, the other a sword with a 'B' near the end; extremely rare, possibly Dutch.	mark : engraved : lid : crossed swords ; mark : engraved : lid : sword : B		Europe & Netherlands	

Various interesting pieces showing actual English design in engraving and wrigglework

DISC 4 REDO SHEET 47: 860.417- 422

No file 860.416



860/4 17	1688 to 1690	A unique William III lidded coronation commemorative tankard; height to lip 4 3/4' and overall 6 5/8'; flat lidded with frontal extension on which is stamped the triad IWG; the thumbpiece is a royal crown appearing for the first time; the body is extensively covered in wriggled work engraving including 'God Bless King William' and a royal crown on the body and lid; inside the base the unrecorded touch TN; condition a little rough from heavy use; circa 1688-90.	triad : stamp : lid extension :: IWG, T. N inscription : engraved : body :: God Bless King William, decoration : engraved : body : royal crowns ;, touch : stamp : base :: TN	England	
860/4 18	A flat lidded tankard with wrigglework portraits of William and Mary, circa 1690.	1690	A William and Mary wriggle-work lidded tankard, circa 1690 ; engraved with the busts of William and Mary; a touch dated 1670 of CB and flowers (see item 860/406)	decoration : engraved : body : C. B William & Mary ;, touch : stamp :: flowers : CB 1670, hallmarks : struck : lid : four hallmarks of a squirrel ;, owner's initials :: handle :: IG	England
860/4 19	One of two wriggle tankards marked by different makers but from the same moulds, circa 1680.	1680	A Charles II wriggle-work lidded tankard; engraved with tulips, foliage etc; the lid with frontal denticulations (decorative, small tooth-like projections); a ram's horn thumbpiece; the touch LA flanking a fleur de lys; circa 1680.	touch : stamp : base : fleur de lys : L. A LA, decoration : engraved : body : tulips & foliage ;, inscription : punched : front of lid : : PL/LH	England
860/4 20		1550	One of a composite set of baluster measures; circa 1550; 10 1/4' to lip, 12 1/8' overall; weight 6 1/2 lbs; capacity 69 oz; unrecorded mark.	mark : stamp :::	England
860/4 21		1550	Baluster measure; one of a composite set; circa 1550; height 8 3/4' to lip; lid stamped with a bell flanked by R and C; a cast medallion with a relief 5-pointed mullet is inserted inside in the bottom; on the left of the handle is a beaded circle unrecorded touch.	mark : stamp : lid : bell : RC, mark R. C : moulded : bottom : mullet (five- pointed) ;, touch : stamp : left of handle : beaded circle :	England
860/4 22		1550	Baluster measure; one of a composite set; circa 1550; wedge and ball; height to lip 7 3/4' , overall 9'; capacity 33 oz.; on the lid 6 tavern marks, each with the tavern keeper's initials RA; on the lip left and right of the handle a touch; beneath base an unrecorded touch IB flanking a harp.	tavern marks : stamp : lid :: RA, I. B touch : stamp : lip ::, touch : stamp : base : harp : IB	England

Interesting balusters – from Mundeys composite set

DISC 4 REDO SHEET 48: 860.423- 427



860/4 27	Three North Country baluster measures of gill Old English Wine Standard capacity, early eighteenth century.	1700	A bar and ball baluster measure of gill Old English Wine Standard capacity with touch of IH in a heart on the lid. Slender North Country type, circa 1700; According to Neish catalogue card part of a composite set.	touch : stamp :: heart : I.H.	I. H	England
860/4 23		1550	Baluster measure; one of a composite set; circa 1550; hammerhead; to lip 6 3/4', overall 7 7/8'; touch of John Curtis with Lorraine Cross and IC initials in a heart on the lid; capacity 17 oz.; excavated, nature's gilding and some body damage.	touch : stamp : lid : Lorraine cross in a heart : IC	John Curtis	England
860/4 24	Early seventeenth century baluster measure with hammerhead thumbpiece.	1600 to 1625	Early seventeenth century baluster measure with ; one of a composite set; James I hammerhead thumbpiece; height 15.2 cm to lip, 18.1 cm overall; five tavern marks each with tavern keepers's initials RP flanking a cockerel; touch on the lip dated 1616 over a T and an obscure letter.	tavern mark : stamp :: cockerel : RP, touch : stamp : lip :: T? 1616	T	England
860/4 25		1550 to 1560	A mid sixteenth century ball slimline baluster; top lip 5 1/8', 6 1/8' overall; later Stuart mantling enclosing the crest of a heron. ; unmarked; circa 1550-60.	decoration : engraved : front : heron & mantling :		England
860/4 26	North England baluster measure, late seventeenth century.	1675 to 1699	Baluster measure with ball thumbpiece, probably North East England, late seventeenth century. According to Neish catalogue card, one of a composite set and has on lid a touch of IH in a heart.	touch : stamp : lid : heart : IH	I. H	England

Very fine balusters said to be from 1550 to 1700