

**Some Uncommon Pieces of Pewter**      **Part II.**  
**By Charles G. J. Port, F.S.A., of Worthing**

IN THE CONNOISSEUR of April last the writer illustrated and described a number of "uncommon" pieces of pewter in his collection that were either entirely new to collectors or that varied in some way from those already illustrated in the several standard works on the subject. That some interest was created by the article is proved by the number of letters received from readers not only at home but from such places as Salonica, Egypt and China. Since that article was written the writer has been fortunate enough to secure, generally at very modest prices, a number of pieces that appear to answer to the description of "uncommon," and these, together with some omitted on the previous occasion from want of space, he now proposes to illustrate and briefly describe. Before

proceeding to do this, a few remarks may be made in reference to some of the pieces illustrated in the April issue.

The statement that English pewter teapots are rare seems justified only two more having been brought to the notice of the writer though particulars of a considerable number in Britannia metal have been sent, which shows how many people—in some cases even collectors—fail to recognise the difference between the two metals. The scent (?) bottle brought interesting letters from two officers serving in the Near East, one from Egypt suggesting that it was a "gohn" bottle. On enquiry as to what he meant by "gohn," the correspondent replied that the term was a local name for "kohl," a fine powder of antimony, used in the East



NO. I.—PAIR OF PLAQUES

5 IN. BY 4 IN.

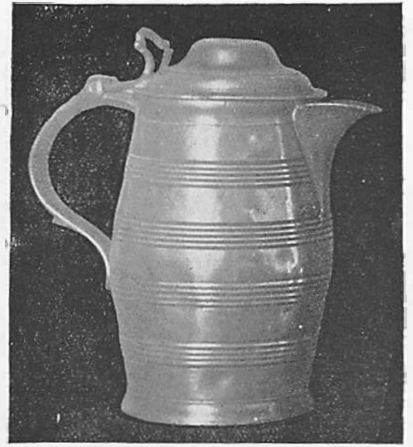
*The Connoisseur*



No. III.—FRENCH FLAGON 7 IN.



No. IV.—ENGLISH FLAGON 10½ IN.



No. VI.—ENGLISH BEER JUG 10 IN.

for staining the eyelids. He suggested that one might find traces of the applicator at the base of the stopper, which on examination was found to be faulty where the applicator may have been wrenched off.

Large mantelshelf ornament.—A correspondent writes to say that the missing piece was certainly a model of a grate as a similar ornament in iron, with grate complete, was recently sold in a London sale-room.

The woollen manufacture flagons, dated 1745-6, have now been definitely identified with Norwich. In the Castle Museum there is a flagon, dated 1782, originally belonging to a carpenters' club or society and later to a Hand-in-Hand Benefit Society. It is covered with engravings of names of officers, coats of arms etc., including the same arms as on that of the Woollen Manufacturers. A correspondent in Norwich

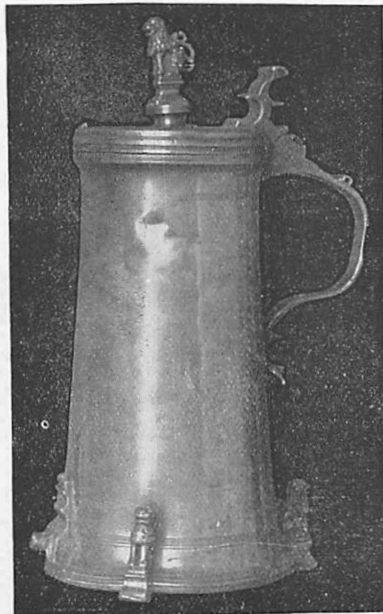
writes to say he has two flagons, dated 1767 and 1814, with similar inscriptions. One can only conclude that the various trade societies or clubs must at some time have amalgamated to form a benefit society on more modern lines.

A remark of the writer's in reference to barbers' basins has led to some controversy in the pewter world. Those interested in the point raised are advised to pay a visit to the Wellcome Historical Medical Museum in Wigmore Street, London, where about a hundred barbers' basins of various kinds can be seen. This really very interesting and important museum seems to have been, until quite recently, entirely overlooked by collectors of pewter.

The illustration of the warming pan has brought to light two others but they differ from that illustrated,



No. V.—FLAGON 11 IN.



No. VII.—GUILD FLAGON 15 IN.

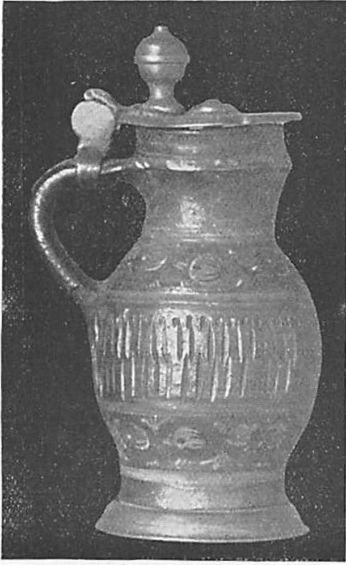


No. II.—CHURCH FLAGON 9½ IN.

## *Some Uncommon Pieces of Pewter*

as they are both filled by unscrewing the handle. No suggestion has been made as to the use of the small handled bowl found in London nor to the mystery

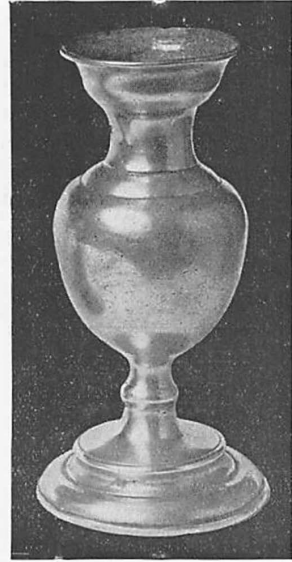
pewter especially appeals to the collector, the antiquary and the layman. A young collector's first piece of church pewter is like one's first salmon—



NO. VIII.—PEWTER MOUNTED  
EARTHENWARE JUG 6 IN.



NO. X.—PEWTER MOUNTED  
EARTHENWARE JUG 9 $\frac{3}{4}$  IN.



NO. IX.—ONE OF PAIR OF  
ALTAR VASES 6 $\frac{3}{8}$  IN.

of the "one pewter ring" in the kitchen chamber mentioned in the Sussex farmhouse inventory of 1747.

In describing the illustrations, makers' marks are given in all cases where they exist. These marks are of the greatest interest to collectors. There are about 1,100 marks on the touch-plates at Pewterers' Hall, and many others are known, in addition to a large number of hall-marks. Owners of English pewter with unrecorded marks will greatly assist this branch of research if they send rubbings of these marks to Mr. H. H. Cotterell, F.R.Hist.S., Buchanan Road, Walsall, who has been working on this fascinating subject for many years.

Of course, one need hardly say that church

the pleasure of getting it is never forgotten. The writer feels sure that the charm and the rarity of the pieces illustrated will be appreciated.

No. i.—A pair of plaques, with figures representing Justice and Mercy, taken from an Adams mantelpiece. They are extremely thin and were fixed on plaster. An unusual form of decoration in English furniture or fittings.

Flagons are very important items in any collection of pewter and a very large number have already been illustrated but the types here shown appear to differ from them.

No. ii.—Church flagon of unusual design, from St. Stephen's Church, Sneinton, Notts. It is inscribed "Jacob Hallam John Leeson



NO. XI.—CISTERN HEIGHT, 13 $\frac{1}{2}$  IN.



NO. XII.—TEA BOTTLE  
4½ IN.



NO. XIII.—MILK PIFFIN  
HEIGHT, 6 IN.



NO. XIV.—CHINESE TEAPOT  
6½ IN.

Church Wardens 1729”  
Hall-marks on lid W.W.  
over roundel and griffin’s  
head. Both repeated.

No. iii.—This pretty  
little piece is French and  
has three marks on the  
lid—(1) hall-marka crowned  
“P” in small shield; (2) a  
figure of Peace and D’an-  
geline a V . . . in oval  
circle; (3) crown above  
crossed muskets and several  
initials indistinct in oval  
circle. Eighteenth century.

No. iv.—This flagon  
may possibly have been  
used for church purposes.  
Mark on bottom, Dove;  
wings elevated, with olive  
branch. Initials E H in  
beaded circle, probably  
Edmund Harvey. The  
shape of body points to late  
seventeenth century but  
from the domed lid it must  
be placed at first half of  
eighteenth century.

No. v.—A type of flagon  
that seems new to collectors.  
The maker’s mark on the  
lip of lid, crown over pew-  
terer’s hammer, 1637, and  
initials (?) W C in a beaded



NO. XV.—COMMUNION TOKEN COLLECTING BOWL. 15½ IN.

circle, is curiously like the  
Scottish mark ordered by  
Act of Parliament in 1567  
and presumably used until  
the introduction of the  
thistle mark in 1641 (see  
Ingleby Wood’s *Scottish  
Pewter Ware*, page 159).  
The writer, however, is of  
opinion that the piece is  
of continental make. The  
form of this flagon points  
to a later period than the  
date on mark but it must  
be borne in mind that  
pewterers generally did not  
alter the date on their  
original marks and conse-  
quently a piece may be forty  
or more years later than it  
is dated. William Eden  
(No. 470 on the touch-  
plates) joined the Livery of  
the Pewterers’ Company in  
1697, and was still making  
pewter forty years later.

No. vi.—A fine speci-  
men of English beer jug,  
inscribed on bottom “W.  
Bridge, Market Inn, Ash-  
ford.” *Circa* 1800.

No. vii.—Guild flagon.  
This very fine piece, weigh-  
ing 15 lbs., is unfortunately

## Some Uncommon Pieces of Pewter

not quite perfect : a shield is missing from the lid. The engraving No. xxi. is exceptionally good for the date 1614 and is interesting as illustrating the period of transition from the old merchants' marks to the symbol or trade mark of later times, the last mark being a pair of shears. In the label containing the date are a two-handled saw, a flaming heart and two arrows. Little is known as to the origin of the merchants' marks which were used from the fourteenth to the early seventeenth century. They are found on rings and seals, were used in place of armorial bearings and are seen side by side with arms on sepulchral monuments. The hall-marks on this piece are a porcupine (twice) and a crowned M. Probably German or Flemish.

Two pewter mounted earthenware jugs.

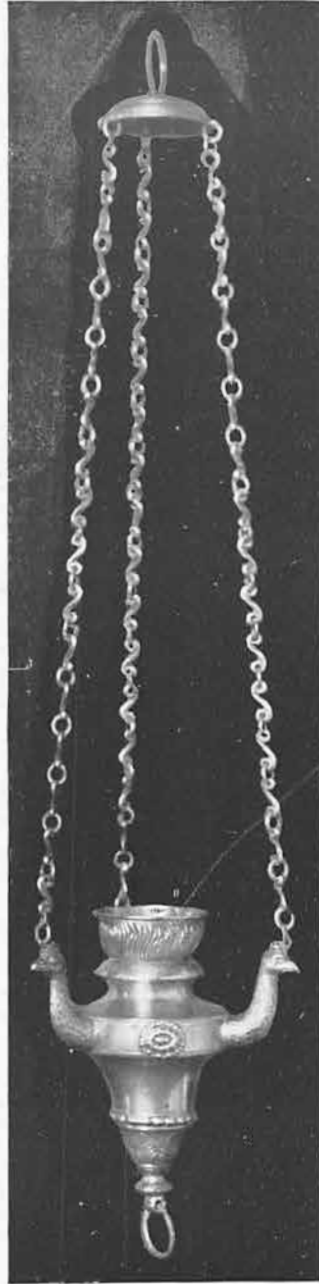
No. viii. is incised and painted on chocolate-coloured ground. It was probably made at Creussen in Bavaria. Seventeenth century.

No. x. is decorated in various colours on white ground. Engraved on the lid is E D H, 1752. Marks: two trees crossed over (?) in shield (twice), and figure of Hope, 1708, in shield. Probably German or Swiss.

No. ix.—One of a pair of altar vases. Nothing at all like them is known to the writer and they must be extremely rare. Much worn mark on one only, a small fleur-de-lys and letter J. Probably French. They are certainly not later than seventeenth century and might be earlier.

No. xi.—Wall cistern or part of lavabo, of good design, with tap in the form of a snake. These articles seem to have been used on the Continent, but the writer has never come across an English one. Hall marks: (1) F A V D S; (2) a plant; (3) lion rampant; (4) a merchant's mark or heraldic design. This is probably from South Germany, latter half of eighteenth century.

No. xii.—A tea bottle or caddy ornamented with fine wriggle-work. Possibly English but probably Dutch. Very indistinct mark; (?) female figure. Early eighteenth century.



NO. XVI.—SHRINE LAMP  
LENGTH, 25 IN.

No. xiii.—A piggin, a vessel used for ladling milk. One of these is illustrated in a group of pewter but no name is given to it. Mark much worn; (?) rose and crown. Probably continental, eighteenth century.

No. xiv.—A Chinese teapot, the spout of which is tipped with brass. Oriental pewter does not appeal much to English collectors but this piece is quaint in shape and is evidently fairly early, probably eighteenth century.

No. xv.—A handled bowl for collecting communion tokens in a Scottish church, inscribed "Merver Kirk, N.B., 1730." The late Mr. Ingleby Wood, in *Scottish Pewter Ware*, states that the tokens were collected in a leathern bag or pewter bowl, basin or quaigh. The writer is informed that two or three wooden handled bowls are known but can hear of no other case of one in pewter. It is surprising how many people in England have never heard of communion tokens which were used for centuries in France, Switzerland, Scotland and sometimes in England. Every town and village in Scotland used them down to about the end of the last century and as the designs were altered from time to time, the varieties known number some thousands. It may interest readers to know that the important collection formed by the late Mr. Robert McVitie, of Edinburgh, is now in the possession of Mr. Francis Weston, of Croydon, and can be seen by appointment. It will probably surprise most collectors and antiquaries to learn that communion

tokens dated 1846 are being used at the present time at the Hanover Presbyterian Church in Brighton.

No. xvi.—A shrine lamp on pewter chains, decorated with very fine work, even the rings at top and bottom being engraved. Continental, latter part of eighteenth century.

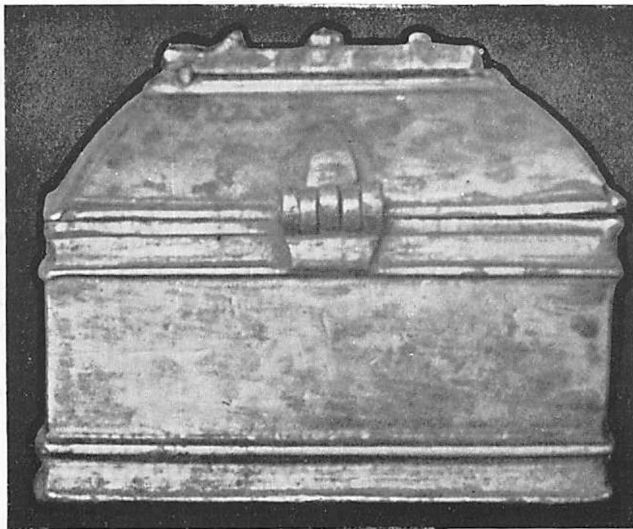
No. xvii.—Chrismatory. Two of these interesting caskets have already been illustrated, one belonging to Mr. de Navarro in his *Causeries on English Pewter*, and another in Mr. Malcolm Bell's *Old Pewter*, page 60. The vessels No. xx., which still contain the sacred oils,

## The Connoisseur

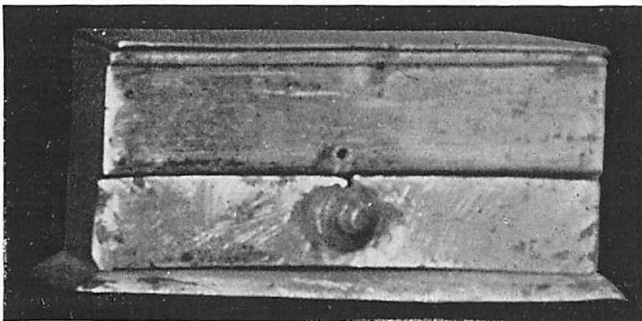
have not previously been illustrated. The initials denoting the various oils are engraved on the chrismatories and, as they all differ somewhat, the writer considers them worth recording.

de Navar-  
 TO CAT CHR I  
 M. Bell OS SC OI  
 Writer's OLS CHR OINF

Those of the first column indicate the oleum sanctum, also called "oleum catechumenorum," used at baptism; the second, the chrisma, or balm, used for confirmation, ordination, and in various consecrations [S. C., Sanctum Chrisma]; and the third, "oleum infirmorum," for the sick. On the top of the lid of the writer's example is roughly engraved "Grastot," but no town or village



No. XVII.—CHRISMATORY 5 IN. BY 4 IN.

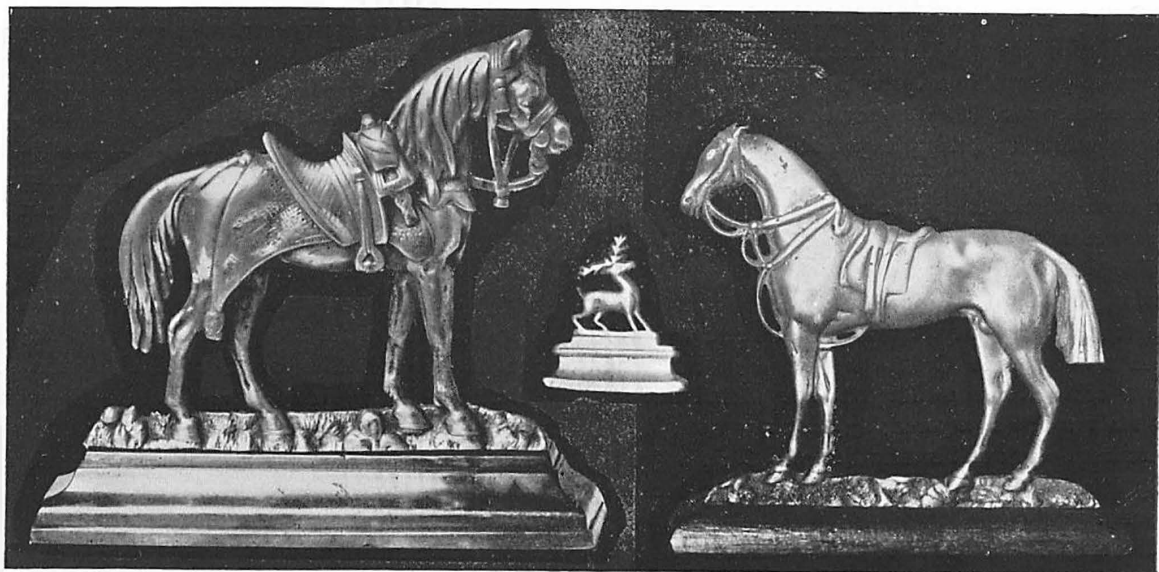


No. XVIII.—TINDER BOX 5 IN. BY 2½ IN.

of that name is known in France or Belgium. Inside the lids of the oil vessels are metal prongs for extracting the oil in drops. All three examples are probably French of the sixteenth century.

No. xviii.—Lidded tinder box, with two compartments for tinder, flint and steel and drawer which still contains the sulphur-tipped "spunks" or lucifers. Matches to produce a light by friction came into general use about 1834. The piece is English, late eighteenth century.

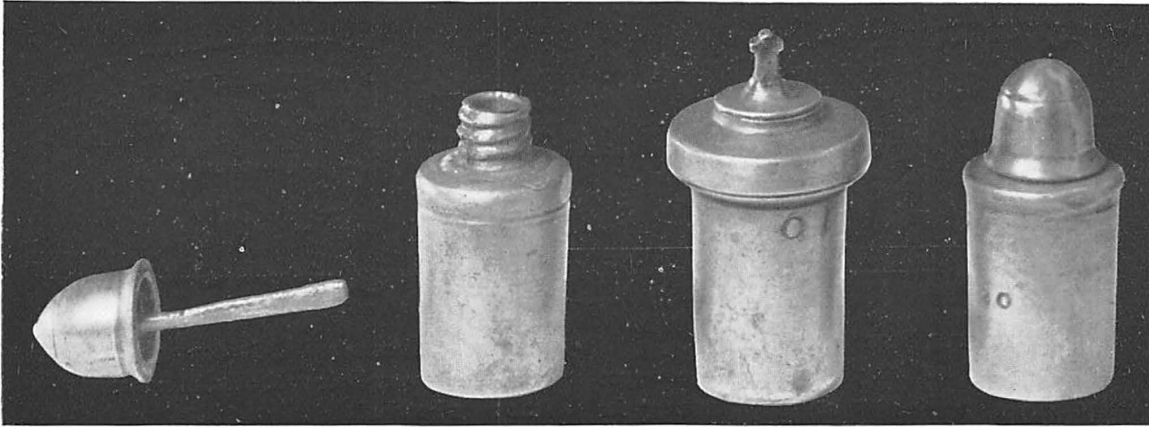
No. xix.—Mantelshelf ornaments were made in brass, iron, lead and pewter. They are rare in pewter, particularly in size larger than the sets of three about



Nos. XIXa, XIXb, AND XIXc.—MANTEL-SHELF ORNAMENTS

a, 6¾ IN.    b, 3½ IN.    c, 8½ IN.

*Some Uncommon Pieces of Pewter*



No. XX.—VESSELS FOR THE SACRED OILS

CENTRE, 2 $\frac{3}{8}$  IN.

4 inches in height. One of 14 inches was illustrated in the previous article and some more examples are now given: (a) a horse, with military trappings, on brass stand;

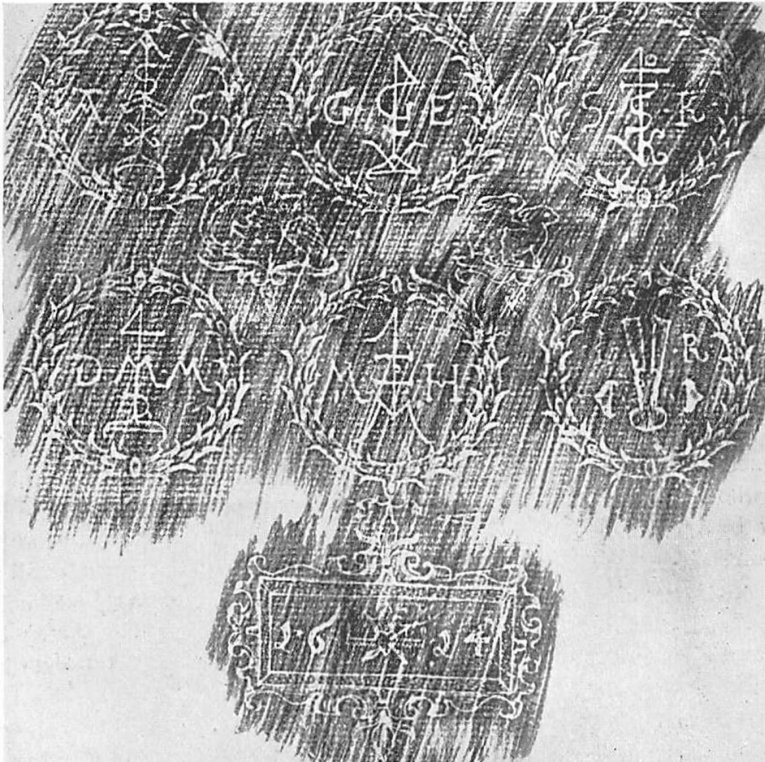
(b) one of a pair of stags; (c) one of a pair of racehorses on oak stands. It will be noticed that the modelling of these pieces is quite good. They are English, late eighteenth or early nineteenth century.

No. xxii.—Napkin ring: an uncommon thing in pewter, prettily decorated. The earliest known in silver are late George III.

In conclusion, the writer will welcome correspondence and cheerfully places his time and his collection at the disposal of lovers of old pewter.

Referring once more to the question of makers' marks, it may be of some interest to readers having little experience on the subject to know that the

*small* rose and crown, rose and crown with initials in crown or three or more initials in any kind of mark is practically certain evidence of continental origin. The same remark applies with almost equal certainty to marks with figures of cupids, angels, figures of Justice, Hope etc., these designs being rarely used by English pewterers.



No. XXI.—ENGRAVING ON NO. VII.

[Owing to the exigencies of space the Editor

regrets that it has been impossible to arrange the illustrations as suggested by the writer.]



No. XXII.—NAPKIN RING CIR. 2 $\frac{1}{2}$  IN.