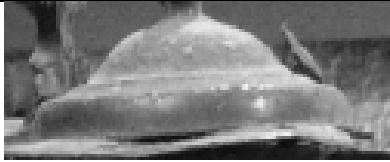


COMPARISONS OF HARRISON STYLE FEATURES

- LIDS on "HARRISON" TYPE ACORN PEWTER COMMUNION FLAGONS

 <p>JANE RUSSELL</p>	 <p>ROBERT WATCH</p>
 <p>CARL RICKETTS PHOTO SIMILAR TO R WATCH?</p>	 <p>CARVICK WEBSTER – FLAGON ENGRAVING DATED 1725 HHC SAYS EDMUND HARVEY – WHY?</p>
 <p>CARVICK WEBSTER</p>	 <p>BONHAMS 2017 SEPT 21</p>
 <p>ST SAVIOURS ENGRAVED DATED 1750</p>	 <p>NAVARRO 136 A & 136B</p>
 <p>NEISH 277</p>	 <p>NEISH 613</p>
 <p>SPOFFORTH CHURCH</p>	 <p>YORK MUSEUM.2008 740 – AS SPOFFORTH?</p>
 <p>YORK MUSEUM YORYM.2008.772 AS ABOVE TWO? AS OTHER TWO AT YORK – ALL SAME MAKER? AND BELLAMY</p>	 <p>RW (SCRIPT MARK) SLIGHTLY DIFFERENT AS NAVARRO (?)</p>
 <p>RW – IH MARK</p>	 <p>WCOP – AS SPOFFORTH (?) AS JAC M(3) BUT NO SPOUT COVER</p>
 <p>COUNTRY LIFE APRIL 1951 AVSG</p>	 <p>COUNTRY LIFE JUNE 1945 WITH SPOUT COVER AS JAC</p>

THIS PAGE THEN REPRESENTS LIDS ON PERHAPS 23 PIECES



**PRESTON HULL CHURCH - PROBABLY SIMILAR TO OTHERS
THE CHURCH AT CRATHORNE SAID TO BE EH AND WITH HIS**



GOULD COLLECTION – LIKE BONHAMS SEPT 2017?



**MARK AND A SPOUT COVER.
BUT SIMILAR TO IH MARKED EXAMPLES**



YORK MINSTER



NORTH YORKSHIRE CHURCH

So what has this section to tell us?

Not much.

It might appear that a “Harrison” lid is so common a feature that it can be identified as that.

.....

THUMBPIECES ON “HARRISON” TYPE ACORN PEWTER COMMUNION FLAGONS

This is more difficult as good, or even moderate, close up photos of most thumbpieces are not available.

These few are –



SPOFFORTH FRONT - IH



SPOFFORTH BACK - IH

JANE RUSSELL – IH BACK VIEW



BONHAMS 2017 SEPT 21



ST SAVIOURS



1788 VETTNEY PARISH CHURCH



ROBIN BELLAMY PHOTO



RW SCRIPT MAAKERS MARK



JAC



JAC



JAC



COUNTRY LIFE 1951



YORK MINSTER 1



YORK MINSTER 2



YORK MINSTER 3



YORK MINSTER 4



YORK MINSTER 5



A NORTH YORK CHURCH



**THE PURPOSE OF THIS SECTION IS TO SEE HOW THEY DIFFERED OVER THE YEARS.
FROM THESE PHOTOS THERE APPEARS TO BE VERY LITTLE OBVIOUS DIFFERENCE.
IMPLICATION BEING THIS SECTION IS USELESS IN TRYING TO DATE THESE PIECES.**

TRUNK BODY SHAPE OF "HARRISON" TYPE ACORN PEWTER COMMUNION FLAGONS

JANE RUSSELL



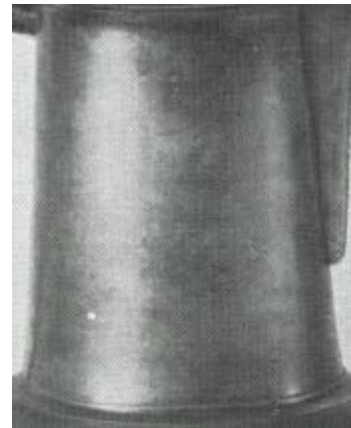
ROBERT WATCH



CARL RICKETTS PHOTO



AGNES CARVICK WEBSTER



BONHAMS SEPT 2017



ST SAVIOURS



NAVARRO 136 A AND B



NEISH 613



NYC- IH



YORK MINSTER (4 ALIKE)



RW - IH



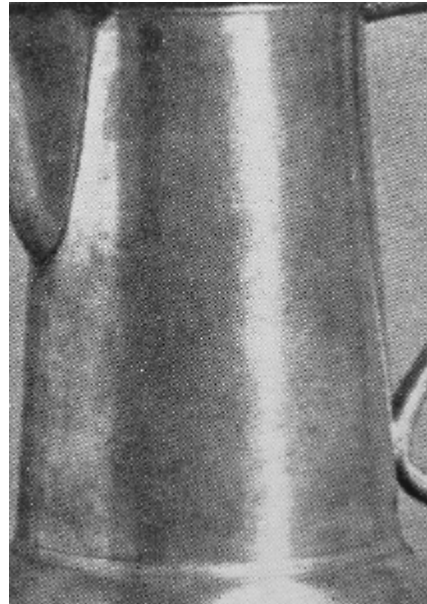
WCOP



JAC



COUNTRY LIFE 1945



THE BODY VARIES IN CONICAL SHAPE BY A FEW DEGREES AND BY A FEW INCHES IN LENGTH.

FURTHER STUDY MIGHT ATTRIBUTE A PARTICULAR BODY SHAPE TO A PARTICULAR PEWTERER AT A PARTICULAR PERIOD OF WORK.

AND IT MIGHT NOT.

SPOUTS FOUND ON "HARRISON" TYPE ACORN PEWTER COMMUNION FLAGONS

JANE RUSSELL – IH



ROBERT WATCH



NYC- IH



YORK MUSEUM



YORK MUSEUM 2



ROBIN BELLAMY – TETNEY PARISH (ENGRAVED 1788)



ROBIN BELLAMY



RW SCRIPT MAKERS MARK



RW - IH



WCOP



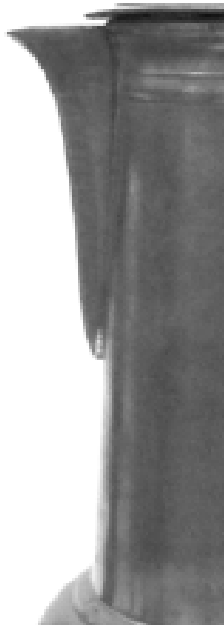
GOVAN



JAC



JAC



COUNTRY LIFE 1945



EYC



YORK MINSTER 1



**YORK MINSTER 2 IH CROWNED X OR SIMILAR
AND ENGRAVED DATE 1767 – both**



And we thought long funnels were earlier

**York minster – 3 –
engraved date 1792**



YORK MINSTER – 4 NO DATE NO MARK



**NORTH YORKSHIRE CHURCH
IH MARK**



We are unable to conclude long spouts were earlier.

We could see similarities but have no clues to ages where IH marks exist.

HANDLES FOUND ON "HARRISON" TYPE ACORN PEWTER COMMUNION FLAGONS

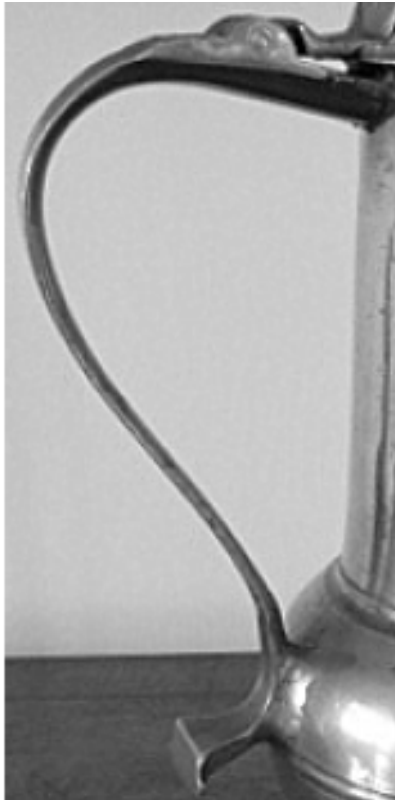
JANE RUSSELL – IH



ROBERT WATCH



CARL RICKETTS PHOTO



BONHAMS 2017 September



ST SAVIOURS ENGRAVED FOR 1750



NAVARRO 136 A&B - IH



AS ST SAVIOURS

NEISH 277



NEISH 613



NYC- LIKELY IH



YORK MUSEUM 1



SAME AS SPOFFORTH?

YORYM 2008.773 AND 816



RW - SCRIPT MARK MAKER



You might think it was a IH

RW - IH



WCOP



Looks like RW - IH handle

JAC 2392



GOULD BONHAMS MAY 2015



THAT IS ENOUGH!

**ALL TYPES OTHER THAN FRANK HOLT'S BROKEN HANDLE
SHOWN. CONCLUSIONS – NONE.**

.....

OPINIONS WELCOMED!!!!!!

ACORN BOWL AS FOUND ON "HARRISON" TYPE ACORN PEWTER COMMUNION FLAGONS

Jane Russell – IH



Low slung – like a ice hockey piece! Convex base

Robert Watch



More fillets – not as fat concave base

Carl Ricketts Photo



Concave lower but nicely proportioned bowl

Agnes Carvick Webster – AGNSW AUS



WHICH OF THE ABOVE?

Bonhams Sept 2017



No fillet to bowl, deeper waist band, convex foot.

ST SAVIOURS 1750 engraving



Heavy on waist banding otherwise similar to some

Navarro 136 A & B – I H



Neish 277



Simple line to centre bowl otherwise similiar to others

NYC CHURCH – likely IH



Slightly different to all above

YORM 2008 772 YORK MUSEUM



larger

waist band with plain bowl to all others

**YORK MUSEUM YORYM
2008.773**



ROBIN BELLAMY PHOTOS 1788



Strangely different to all

TOO MANY AND WHAT WE ARE SEEING IS SMALL DIFFERENCES IN MOST BOWLS – SO WHAT DOES THIS TELL US?

OPINIONS WELCOMED

.....

THIS SHOWS HOW BY EXAMINING ALL THESE VARIOUS ASPECTS WE SEE IF THE PHOTO WE ARE LOOKING AT HAS ALREADY BEEN SEEN IN YEARS BEFORE OR AFTERWARDS.