

Footed Plates

Jamie Ferguson

Edited Version of a talk at a
Pewter Society Meeting
September 2013

What's in a name !?

Paten – ‘an ecclesiastical term for a small plate used to hold the wafer bread which is to be consecrated or to collect alms.’

De Navarro, Causeries on English Pewter

....the paten on foot, tazza-salver, salver-paten or bread-holder, as it was variously called, entered the Church during the 17thC and was of domestic origin

Tazza - (Italian, "cup", probably from Arabic *tassah* bowl) is a shallow saucer-like dish either mounted on a stem and foot or on a foot alone.

First known use of word tazza was in 1824!

- Dating
- Plate and Rims Styles
- Types of Foot
- Methods of Construction
- Makers and Locations
- Uses

Dating

Silver Examples



London - 1683



London - 1690

Dating

Silver Examples



London - 1705



Irish - 1729

Dating

Thomas Blount in his 1661 2nd Edition of:

'Glossographia; or, a dictionary interpreting the hard words of whatsoever language, now used in our refined English tongue' (first published 1656)

describes a footed plate using a new word:

*'**Salver**' ...stating they are 'a new fashioned piece of wrought plate; broad and flat, with a foot underneath and is used in giving Beer, or other liquid thing, to save or preserve the Carpit and Clothes from drops.'*

Dating

Church wardens accounts of St Michael in
Bedwardine, near Worcester, May 1641

*"Two fflagon pewter pottes for the wine at the
Coion, the one pottle, the other three pints"*

*"Two pewter plates to sett under the said
fflagons upon the Coion Table to preserve the
Cloth & Carpett from spillings of wine"*

Dating



Juan Bautista de Espinosa Spain 1624

Dating

Like silver examples, surviving pewter

footed plates date between ca 1670-1750

based upon known makers date ranges

Plates and Rim Styles

- **'Specific' plate mould**

Stepped - moulded/reeded
- gadrooned

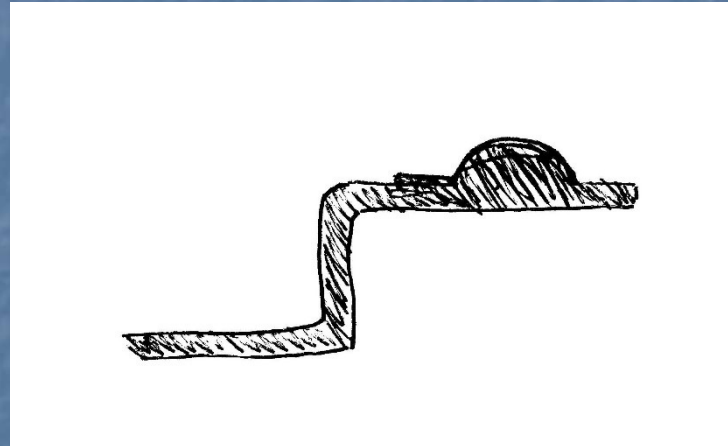
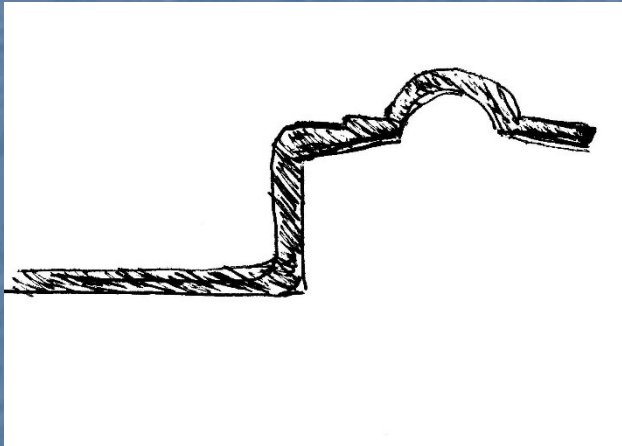
Turned-up

- **'Standard' plate** - narrow rim/reeded
- single reed

- **'Others'**

Plates and Rim Styles

Stepped



A perfect design for containing a small quantity of liquid

Plates and Rim Styles



Garrad Ford - Wigan

Plates and Rim Styles



Ex Little Collection – worn touch mark

Plates and Rim Styles



John Hardman - Wigan

Plates and Rim Styles

Turned-Up



Thomas and Robert Banks - Wigan

Plates and Rim Styles



Exeter Cathedral – by Jacob Clapman, Falmouth

Plates and Rim Styles



Edward Leapidge - London

Plates and Rim Styles

'Standard' plates (plain or reeded rim/narrow rim)



John Batcheler? - Bristol

John Stribblehill? - London

Plates and Rim Styles



Maker unknown 'RN'



Plates and Rim Styles



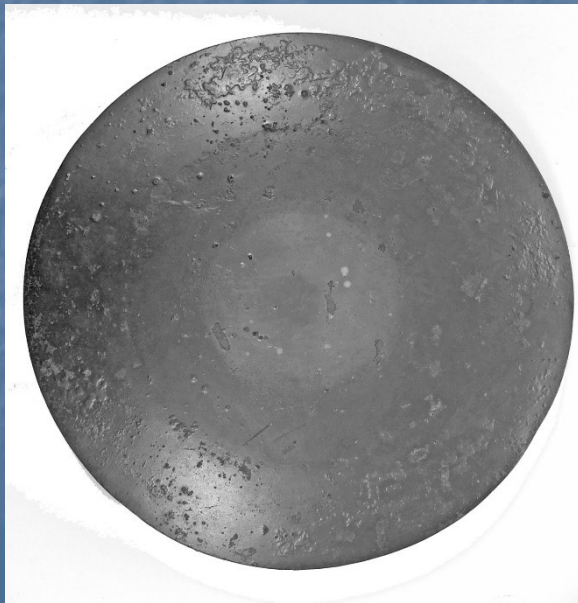
Plates and Rim Styles

Other Types



John Redshaw - London

Plates and Rim Styles



John Tidmarsh – London

Ex Richardson Collection

Plates and Rim Styles

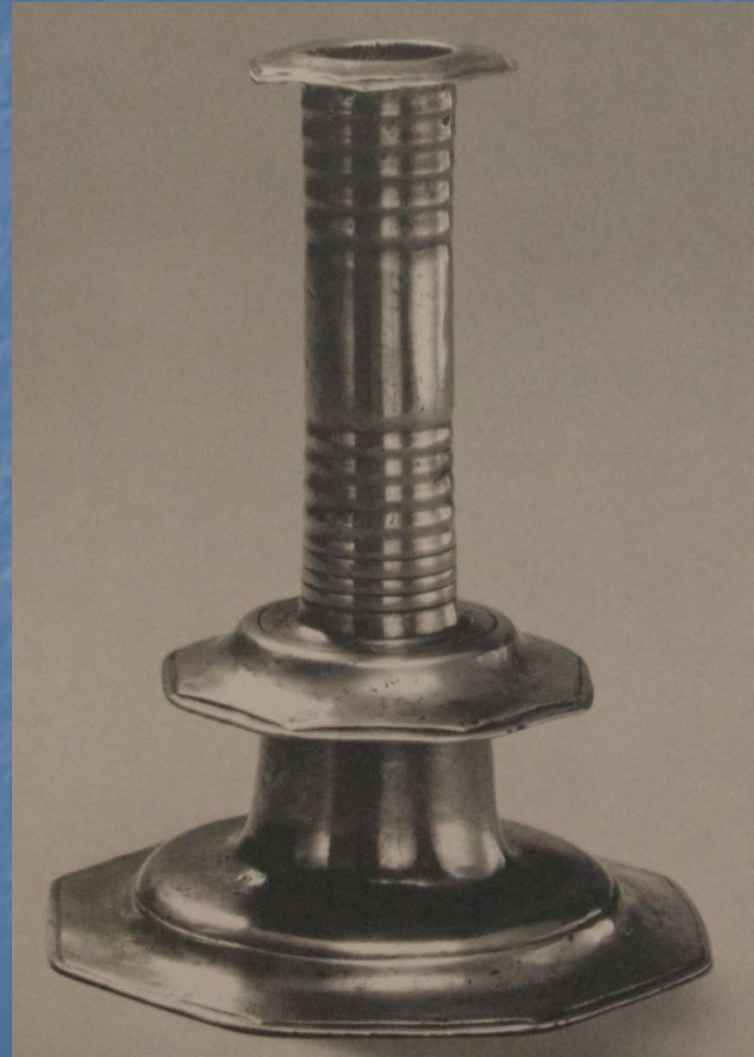
Dating sequence difficult, but generally:

'Standard' plate < Stepped < Turned-up

Foot and Attachment



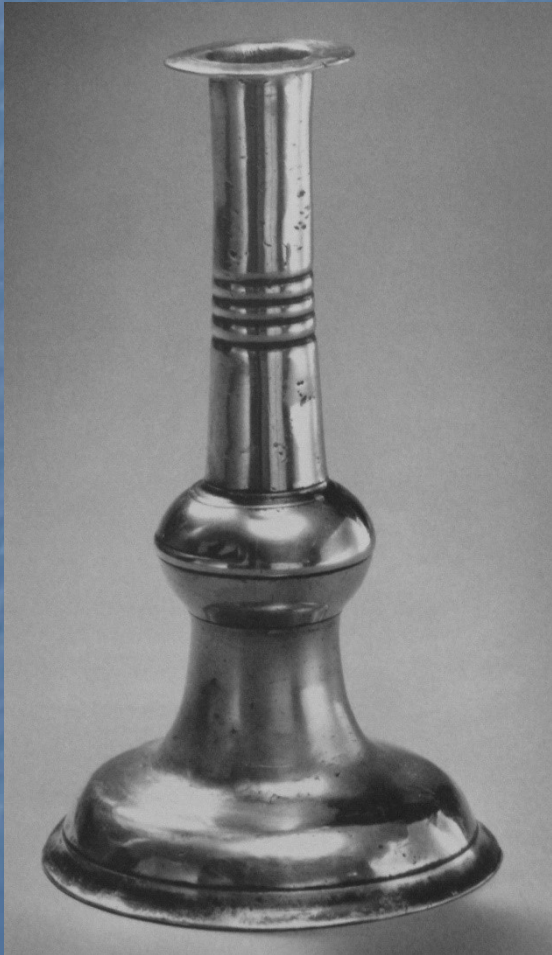
Foot and Attachment



Foot and Attachment



Foot and Attachment



Foot and Attachment



Foot and Attachment



Foot and Attachment



Foot and Attachment



Makers/Locations

- Likely only ca 100-150 surviving examples with many held by institutions
- Vast majority are marked on the reverse side of the plate (although not always legible!)
- Wigan and London makers predominate (>80% of known examples)
- Over 20 different makers
- Examples also known from Bristol, Newcastle, Worcester, Penrith, Falmouth (i.e. countrywide)

Uses

- Undoubtedly created for the table top presentation of a flagon/tankard to prevent drips from staining the table
- **This is how to display your footed plate!**



Uses

- As a functional item, their use was likely extended over time for other purposes
Eg presentation of cakes, deserts
(particularly those with turned up edges)

Question:

What were narrow rim plates originally designed to be used for?

Table mat for eg porringer or tankard?

Uses

still used for such today!



Tudric



modern



Silver 1904