

“THE NEISH TOUCHPLATE” OF FAKE MARKS

“TOP ROW”: H.V.F. BENET, BAXTER, A.N. SEYMOUR

GLASGOW EXHIBITION 1938

1. WILLIAM ALLEN OF LONDON: Cott. O.P. 61, LTP 240

Very good representation of genuine mark.

“Points” on Crown are not uniform in genuine mark.

“A” more pointed and both letters “W” and “A” less squat in fake mark.

Beading on outer edge of octagonal mark is more pronounced on fake mark.

“Leaves” embrace “acorn” more closely on genuine mark.

Single stem below acorn leaves on fake mark, whereas they are splayed on genuine one.

- Recorded in Peal’s MPM as found on fake Broad Rimmed Plates and Dishes and Multiple Reeded Plates.



2. Poorly made punch which does not represent any known mark; possibly “WJ” above two crowns/coronets.



3. “TH” OF LONDON: Cott. O.P. 5683, LTP 17

Believed to be Thomas Haward: Cott. O.P. 2215. (See Pewterers of London 1600-1900 Carl Ricketts).

Good representation of genuine mark, although generally the devices in fake mark lack bold definition, particularly “Fleur de Lys” and “Crown”.

In lower section of mark, there is a well defined “dot” under “Fleur de Lys” which is not discernible on fake mark.



4. CATESBY CHAPMAN OF LONDON: Cott. O.P. 884, LTP 756

Fake mark lacks bold definition although this is not always easily discernible when marks are worn/rubbed.

Genuine mark (25mm) is much larger than fake (18mm).

Lettering in name on fake mark appears crude and modern.



5. STEPHEN MAXWELL OF GLASGOW: Cott. O.P. 3153

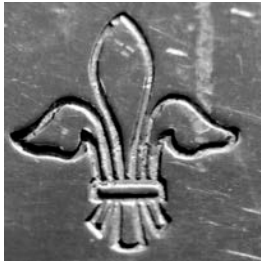


6. SIR THOMAS CURTIS OF LONDON: Cott. O.P. 1265

Peal's MPM states "not found on any genuine piece". This mark, purporting to be the Housemark of this man, has been found on numerous faked "Wedge Balusters".



6. "Fleur de Lys", mark with no makers initials which, as far as I am aware, does not represent any known genuine makers mark.



8. “Heraldic Lion” holding “Sceptre issuant from a Coronet” set within unusual shaped shield which, as far as I am aware, does not represent any known genuine makers mark.



9. “Elephant” above inscription “Dum Vivo Spero” which, as far as I am aware, does not represent any known genuine makers mark.



10. **“TB” OF LONDON: Cott. O.P. 5470, LTP 45**

Poorly made punch, lacking definition of genuine mark.
Beading around genuine mark not discernible on fake mark.
Letters “TB” and edge of “Bell” appear to be struck incuse on fake mark, on which the “clapper” cannot be seen.



11. **JOHN TRAPP OF LONDON: Cott. O.P. 4803, LTP 731**

Engraving on die of fake mark is shallow and not well defined although this, in itself, will be difficult to discern as most makers' marks are worn/rubbed.

Letters in name are more "modern" not of the same style as original late 17thC mark.

Centre edge of mark on both sides is clearly "pointed" but in fake mark it is barely so.

To the lower left and right of "John" and upper left and right of "Trapp," the genuine mark clearly denotes "scrolling" which is not apparent in fake mark.

Fake mark is slightly larger than genuine mark.

- Recorded in Peal's MPM as found on fake 12½" octagonal plates.



12. JAMES STANTON OF LONDON: Cott. O.P. 4480, LTP 1089

Genuine mark slightly smaller than fake.

Fake mark shows letters of "J STANTON" all same size at circular top of device whereas, in the genuine mark, the "J" is "dropped" below natural circular line of the rest of the name.

"Escallop Shell" device on genuine mark clearly depicts vertical and horizontal lines although this may not be immediately apparent on a worn/rubbed mark.

On genuine mark, either side of the lower point of the "Escallop Shell" there are what appear to be two isosceles triangles almost touching the shell. On the fake mark, the triangles do not have regular angles/sides and are not touching the "Escallop Shell" device.



13. JOHN LAWSON OF LONDON : Cott. O.P. 2873, LTP 688B

Collectors will not have much difficulty in determining the fake mark for this maker, the genuine mark being much smaller.

The fake mark depicts "IL" above a "crescent" whereas, in the genuine mark, the "crescent" almost encircles the initials "IL".



14. HUMPHREY EVANS OF EXETER: Cott. O.P. 1586

A completely different fake mark of this maker appears on “The Neate Touchplate”. This new mark is recorded in Peal’s MPM as found on fake Candlesticks.



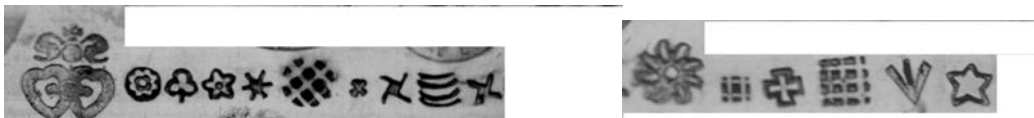
15. “IC” OF LONDON: Cott. O.P. 5504, LTP 51

It will be extremely difficult to differentiate between genuine and fake mark particularly as most genuine marks will be worn/rubbed.

The one striking difference is that the “I” in the genuine mark has bold horizontal strokes to top and bottom of initial, whereas fake mark depicts “I” with virtually no strokes to top and bottom.



15a. Various spurious excise marks?



16. JOHN TROUT OF LONDON: Cott. O.P. 4819, LTP 464

“Crown” device poorly depicted in fake mark which is rounded at the top whereas in genuine mark it is almost like the “top of a heart”.

Device of a “trout” shows several fins, almost like a shark in genuine mark, which are somewhat weak in fake mark.

Letters “J” and “O” missing on fake mark due to either poor striking or weak impression on die.

Lower part of scroll surrounding “TROUT” at bottom of mark not apparent on fake.

* Peal’s MPM records this mark as found on fake Octagonal Plates.



17. THEOPHILUS READING OF LONDON: Cott. O.P. 3867, LTP 6 and LTP 263

This mark purports to be No. 6 on the London Touchplate.

Centre of device represents two snakes coiled around a pole. On the fake mark, more of head and body of the snakes show before “firstcoil”.

Genuine mark not well struck on London Touchplate, such that not the whole of “Theophilus” is not discernible. The faker’s die has been made such that not all the name shows.

“Wings” surrounding snakes at either side of mark are positioned differently in fake mark. In the genuine mark, the “vertical pole” around which the snakes are coiled, points toward the centre of “D” in “READING”. The fake mark shows the “D” to right of centre.

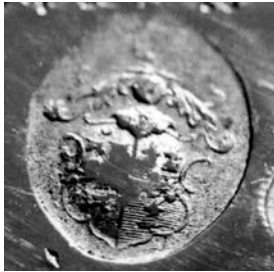
Lower part of “scroll” surrounding “READING” is not apparent in fake mark.



18. ? No known makers mark. As device is a heraldic shield, this may represent a “fake house mark”.



19. ? See 18 above.



20. **“GR” OF LONDON: Cott. O.P. 5883, LTP 50**

Genuine mark smaller than fake mark.

Device of “double headed Eagle displayed” lacks definition in fake mark, although this will be difficult to ascertain, as most genuine marks are worn/rubbed.

“GR” and “63” are slimmer/more elongated in fake mark.



21. **“TG” OF LONDON: Cott. O.P. 5635, LTP 267**

Poor representation of genuine mark, die is somewhat shallow.

Top and bottom of “T” not as bold in fake mark; vertical stroke of “G” appears “squared”, joining the horizontal parts almost at right angles.



22. ?



23. **“WILLIAM IV” EXCISE MARK**



24. **“II” OF LONDON: Cott. O.P. 5713 LTP 116**

Genuine mark smaller than fake mark. Both “I”s in genuine mark have bold horizontal strokes at top and bottom.

Numerals “1666” are slimmer/more elongated in fake mark and more upright; in genuine mark, the “6”s appear to list towards the right.

Device of “hammer” is bold in genuine mark and, on the head ends, above the outer edge of the “I”s; in fake mark, there is little space between the hammer head and edge of mark, with the hammer head extending well beyond the outer edges of the “I”s.

- Peal’s MPM reports found on fake Flat Lidded Tankards.



25. **“WD” OF LONDON: Cott. O.P. 5560**

Not on London Touchplate.

- Reported in Peal’s MPM as found on fake Hammerhead Baluster Measures.



26. **SAMUEL COCKS OF LONDON?**

Not the mark on London Touchplate



27. “GT” OF LONDON: Cott. O.P. 5970, LTP 57

On genuine mark, lower front leg on “Rampant Lion” points above letter “G”, whereas in fake mark, it is pointing directly to the centre of the “G”.
Back legs of “Rampant Lion” are closer together on fake mark.



28. ROBERT MARTEN OF LONDON: Cott. O.P. 3092, LTP 7

In genuine mark, the device of a “bird” appears to have three tail feathers, which is not apparent on fake mark.

“Bird” more horizontal in genuine mark but more upright in fake mark.

“Bird” has sharply pointed beak on fake mark.

On “M” the right hand upright on fake mark is vertical but at a slight angle in genuine mark.

- Another faked mark of this maker appears on “The Neate Touchplate” albeit not from the same die. This faked mark is a much better copy than that on “The Neate Touchplate”.
- Peal’s MPM reports that this mark is found on fake Candlesticks, Flagons, Flat Lidded Tankards and Hammerhead Baluster Measures.



29. ? “Heart” surrounded by large dots within a heart shaped touch.



30. FRANCIS PERKINS OF LONDON: Cott. O.P. 3613A, LTP 340

On genuine mark, the horizontal staves of the “Plough” are “broken” by an upright running directly vertical below the “F”; the fake mark shows the horizontal staves progressing through the whole of the “Plough” to the outer edge of the mark.

“FP” and “1680” are bolder on genuine mark, although again it may be difficult to detect as most genuine marks are worn/rubbed.



31. “WP” OF LONDON: Cott. O.P. 5864, LTP 74

Genuine mark shows “W” having large horizontals on the top of each upright which appear to touch and large horizontal on bottom of “P”; this is not apparent in fake mark.

Above “WP”, there are bold flowerheads which are represented as a series of dots in fake mark.

Digits in “1655” are much closer together in genuine mark.



32. “EH” OF LONDON: Cott. O.P. 5644, LTP 61

This fake mark is an extremely crude representation of genuine mark and should not fool any Collector when carefully examined.

It is difficult to make out that the device is a “Plough” in fake mark.

Fake mark does not show “Star” which is in top left hand side of genuine mark, above the “Plough”.

“EH” more bold and squat on genuine mark.



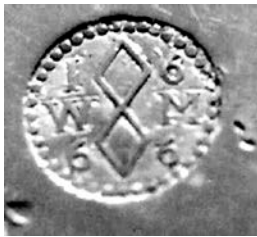
33. “WM” OF LONDON: Cott. O.P. 5802, LTP 58

This simple mark of “two Fusils point to point” is probably one of the easiest devices to copy and hence difficult to detect on worn/rubbed marks.

The “6’s” in “1666” are more upright in fake mark but lean forwards, particularly the top loop, on genuine mark.

“M” in genuine mark is not uniform in that the right hand upright is higher than on the left hand. Centre of “M” on genuine mark represented by slightly curved lines not straight as on fake mark.

- Peal’s MPM records this mark found on fake Salts, Broad Rimmed Dishes and Plates.



34. LAWRENCE WARREN OF LONDON: Cott. O.P. 4970, LTP 207

Poorly defined device of “Crown” in fake mark.

“L” is more squat than “W” in genuine mark whereas it is the opposite in fake mark which shows a taller “L” and a poor representation of “W”.

- Peal’s MPM records this mark appearing on a fake Tall Lidless Flagon with bands around the drum.



35. THOMAS WAIGHT (WAITE) OF LONDON: Cott. O.P. 4902, LTP 325

“Ring” on top of “Bell” device larger in genuine mark.

Body of “Bell” in fake mark is less elongated and appears more like a beehive.
“1679” almost in a straight line on fake mark whereas they follow the semi-circular outer edge of the touch in genuine mark.

In the fake mark the “7” is directly in the centre under the “Bell” but it is leaning right of centre on genuine mark.

* Another variation of this fake mark appears on “The Neate Touchplate” but is different in many ways particularly as the “Bell” has a “Clapper”.

Peal’s MPM reports found on fake Salts, Porringers and Tankards. As there are 3 representations of this makers mark, it is not known whether the fakes reported by Peal were represented by one or all of the fake marks.

It is also interesting to note that in Cotterell. O.P., Thomas Waight is reported to be a Spoonmaker.

Perhaps Collectors should be extremely vigilant if this mark is found on pieces other than spoons!



36. JOHN DYER OF LONDON: Cott. O.P. 1479, LTP 432

The maker of the fake die has been less than clever in this case. In the genuine mark, the device is a “Seedling Plant” which has been depicted, in the fake mark, as a dagger/sword with a wavy blade.

“T” in fake mark poorly depicted and “D” touches top of device; in genuine mark, the “T” and “D” are both below; in the case of the “D” directly below the leaves of the device.

- Peal’s MPM records various reports of fakes purporting to be this maker.



37. THOMAS WAIGHT (WAITE) OF LONDON: Cott. O.P. 4902, LTP 325

See earlier entry for this maker.

Loop at top of “Bell” much smaller on fake mark and “Bell” is narrower on the shoulder.

In the fake mark, “1” and “9” in “1679” higher than bottom of “Bell”.

Yet another variation of this mark which is different from others on this plate and “The Neate Touchplate”.

Please refer to other remarks earlier in respect of fakes for this maker.



38. HALLMARK OF A “BUCKLE”?



39. Makers mark of an “Hourglass” without makers initials.

Was this purporting to represent that well known maker William Eddon, Cott. O.P. 1503, LTP 1470?

Peal’s MPM reports that William Eddon’s mark has been found on fake Salts, Continental Loving Cups, Flat Lidded Tankards and Dome Lidded Tankards.



40. HALLMARK OF A “TREE/PLANT”?



Another version of this mark appears on “The Neate Touchplate” but the letter “TM” and “1716” and shape of touch, are entirely different.

- Peal’s MPM records found on fake Baluster Measures.

41. **HALLMARK OF “EY”?**



42. **Makers Mark of “II” surrounded by indiscernible device.**

Possibly attempting to represent Cotterell. O.P. 5711, LTP 90 although fake mark is not round.



43. **CROWNED “WR” EXCISE MARK**



44. **MARK DATED “1776”**

Unusual shape for a mark which does not appear to represent any known maker.



45. **“WF”**

This mark does not appear on the London Touchplate hence no comparison can be made.

However, it probably represents Cott. O.P. 5604 which is believed to be William Fasson’s pot mark which is found on genuine Lidded Baluster Measures.



46. **“CR” OF LONDON: Cott. O.P. 5878, LTP 220**

Device of a “Tulip” poorly depicted in fake mark; petals are not naturally falling open, the body of the flowers appears to have “sprouted ears” at the top.
“7” in genuine mark is simple with a level top stroke which is slanting in fake mark. Letters “CR” bolder in genuine mark.



47. **“EC”**

Does not appear to represent any known genuine makers mark.



48. **“EA” and device of a “Bell”**

Does not appear to represent any known genuine makers mark.



49. **“AW” OF LONDON: Cott. O.P. 5996, LTP 79**

(Peal's MPM states Allen Walley, Cott. O.P. 4934A)

Fake mark depicts "Three Tudor Roses" as five petalled, whereas genuine mark depicts "multi petalling" in the form of "dots forming a circle".

"AW" in fake mark is taller/slimmer than lettering in genuine touch.

* Another version of this mark appears on "The Neate Touchplate".

Peal's MPM states found on fake Salts and Broad Rimmed Dishes.



50. "TM 1716": Cott. O.P 5800

(Believed to be the pot mark of Thomas Matthews of London who struck his other mark on the London Touchplate in 1716: Cott. O.P. 3138, LTP 702).



51. ?

Possibly representing a hallmark of man or woman's head.



52. EXCISE MARK OF "CROWN ABOVE 1847"



53. **“HB”**: COTT. O.P. 5429

Shown in Cotterell under Chapter VII (Initialed Marks) but no comparison can be made as this touch does not appear on the London Touchplate.



54. **HALLMARK OF “FLEUR DE LYS”**



55. **HALLMARK OF “IC”**



56. **HALLMARK OF “ID”**



57. **HALLMARK OF “EK”**



58. OWNERS INITIAL "F"?



59. OWNER'S INITIAL "L"?



60. HALLMARK OF A "FACE"?



61. HALLMARK OF A "LEOPARDS FACE"?



62. HALLMARK OF A "FACE"?



63. OWNER'S INITIAL OF "B"



64. HALLMARK OF "LION PASSANT"?



65. HALLMARK OF "EA"?



66. HALLMARK OF ?



67. HALLMARK (LARGE) OR MAKERS MARK OF "TUDOR ROSE"



68. OWNER'S INITIAL "D"



69. HALLMARK OF A "FLOWER"



70. “WP” OF LONDON: Cott. O.P. 5865, LTP 73

Fake mark depicts leaves in device which are much larger than in genuine mark, stretching almost to the edge of touch.

Very crude “63” in fake mark which does not represent figures of 17th C.

* Peal’s MPM records found on fake Candlesticks and Salts.



71. “RD”: Cott. O.P. 5554A

Not struck on the London Touchplate hence no comparison can be made.

Cotterell states that this touch is found with that of O.P. 5801, another version of “TM 1716”!!



72. “FI”

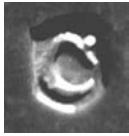
Does not appear to represent any known genuine makers touch.



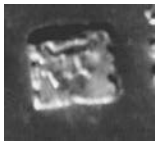
73. HALLMARK OF A “THISTLE”



74. **OWNER'S INITIAL "C"**



75. **HALLMARK OF A "LEOPARD'S FACE"**



76. **OWNER'S INITIAL "T"**



77. **"WD" OF LONDON: Cott. O.P. 5559, LTP 114**

Fake mark much smaller than genuine mark, shows skimpy version of "Fleur de Lys".

"6" and "3" in fake mark struck uniformly equidistant either side of top of "Fleur de Lys".

In the genuine mark, the "6" is struck towards the left hand edge of the touch.

"WD" struck lower in fake touch.

Beaded edge of fake mark represented by a series of dots with spaces between.



78. **HALLMARK OF "LION PASSANT"**



79. ?

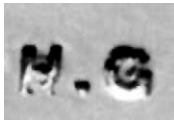


80. "BT"

Does not appear to represent any known genuine makers mark.



81. PUNCHED LETTERS H.G. ?



82. "AL"

Does not appear to represent any known genuine makers mark.



83. HALLMARK OF "NG"



84. OWNER'S INITIAL "A"?



85. "G.IV" EXCISE MARK



86. HALLMARK OF "SQUARE BUCKLE" !



87. HALLMARK OF "BLACK LETTER" ?



88. EXCISE MARK (EDINBURGH?)



89. "G.IV" EXCISE MARK



90. HALLMARK OF "LION PASSANT"

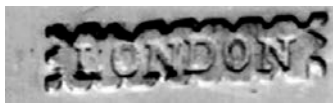


91. "BB" OF LONDON: Cott. O.P. 5415, LTP 35

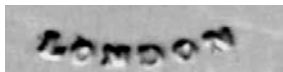
Fake mark is "weakly" cut. The "B" representing surname is smaller than the one representing christian name whereas they are the same size in genuine mark. Date "1664" is extremely feint in fake mark especially last digit which appears to be a "5" making date "1665" in fake mark.



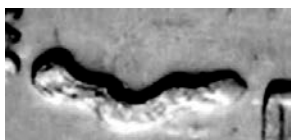
91.



93.



93a.



94.

} ALL "LONDON" LABELS



95.

96. OWNER'S INITIALS "PAF "



97. HALLMARKS OF "NG" AND "LI "



98. "WF" 1689 ?



99. OWNER'S INITIAL "J"



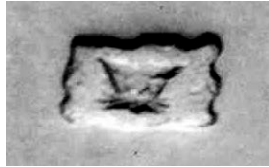
100. "PE" WITH "HOURLASS" ?



101. HALLMARK OF A “SCALLOP SHELL”



102. HALLMARK OF ?



103. HALLMARK OF “FLEUR DE LYS”



104. HALLMARK OF “LION PASSANT” ?



105. HALLMARK OF ?



106. HALLMARK OF “VI”



107. "WD" OF LONDON: Cott. O.P. 5559, LTP 114

Another smaller version of this mark appears earlier on the plate No. 77.
In fake mark, "Fleur de Lys" is more ornate whereas in original the 3 leaves are closer together.

"6" in original mark is further away from "Fleur de Lys" but in fake mark "6" and "3" are almost equidistant either side of device.

Fake die is very well made, take care!



108. HALLMARK OF "THISTLE"



109. HALLMARK OF ?



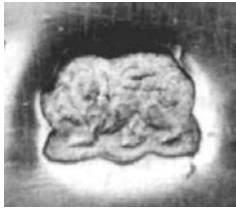
110. OWNER'S INITIAL "G"



111. OWNER'S INITIAL "P"



112.HALLMARK OF “LION PASSANT”?



113.HALLMARK OF “CROSS”?



114.HALLMARK OF ?



115.OWNER’S INITIAL “Q”



116.HALLMARK OF “LION RAMPANT”



117.OWNER'S INITIAL "A"



118."GL"?



119.SPURIOUS SPOONMAKERS MARK?



120."IG" IN SHIELD?



121."WE"?



122. "IT"?



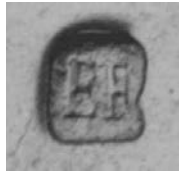
123."GC"?



124. "HE"?



125. "EF"?



126. HALLMARK "BF"?



127. OWNER'S INITIAL "D"



128. OWNER'S INITIAL "N"



129. OWNER'S INITIAL 'P'



130. "IC"?



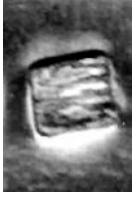
131. HALLMARK OF "RC AND CROWN"?



132. "IT"?



133?



134. OWNER'S INITIAL "V"



135. ?



136. HALLMARK OF "FLEUR DE LYS"



137. "CROWNED HR" EXCISE MARK



138. "GB"?



139. "CROWNED X" QUALITY MARK



140. "TUDOR ROSE" HALLMARK?



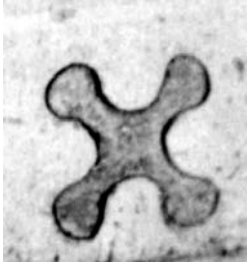
141. "WT" OR "WI" 1668?



142. ?



143?



144 "CROWNED X" QUALITY MARK



145 "SHAMROCK"?



146 "A" IN BEADED CIRCLE?



147 "1/2"



148 "17 1/2"



149. "D" EXCISE MARK?
88

