

SNUFF BOXES AND TOBACCO JARS

An interesting subject for a collector as these can still be found and might vary in price from about £40 or less - upwards (the dearest below was about £500). Very attractive and need not take up a lot of space!

With thoughts of the UK's unusually severe - and internationally regarded as archaic - copyright regulation most of the snuff boxes were found in September 2009 on the website of www.pewtersellers.com – indeed this is perhaps the best display available to me, and I thank them for permitting this website to use these images – as certainly I would rather use these than writing/emailing to dozens of folk for their consent (most of which such letters/emails are often simply ignored).

(To those who consider this as a plug for www.pewtersellers.com – well I hope so, and it is freely given - as I am grateful for all such assistance- and this website welcomes AND ENCOURAGES all contributions of such images and guidance to any better illustrations that I might freely use.) So the images here and details are simply to give an impression of the wider range available for pewter collectors.

Not all of the snuff box images have been provided by www.pewtersellers.com and in thanks for them letting me use their images I did promise to mention their help – though perhaps not three times!

TOBACCO JARS

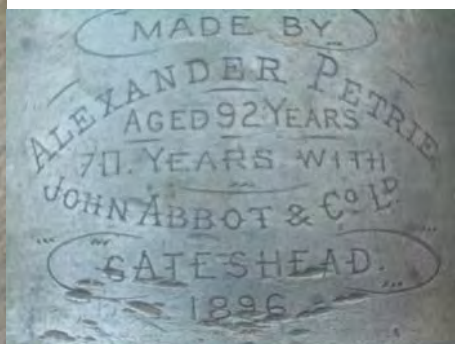


Early 19th century English pewter tobacco jar, container

An attractive cylindrical pewter tobacco jar with a domed lid and the two bands of incised lines around the body that are typical of early 19th century pewter wares. Hallmarks just below lip of Yates, Birch & Spooner of Birmingham, who were in business from circa 1828 to circa 1839. (Unusually, the hallmarks are struck upside down.) Traces of a crowned X mark inside base. Complete with original lead weight inside. Base diameter 4¼" (10.7 cm), overall height 5⅞" (15.0 cm). Part of lot 285 in the sale at Christies South Kensington on 16 June 2009.



The body has traces of light oxide on the outside and some oxide on the inside base, but has no dents or repairs. The lid has had a couple of small knocks on its dome and there is a minor casting flaw internally. Again its external surface has traces of light oxide. The lead weight has a couple of tiny nicks to the edge but is otherwise in good condition.



ABBOT of Gateshead Pewter Tobacco Jar

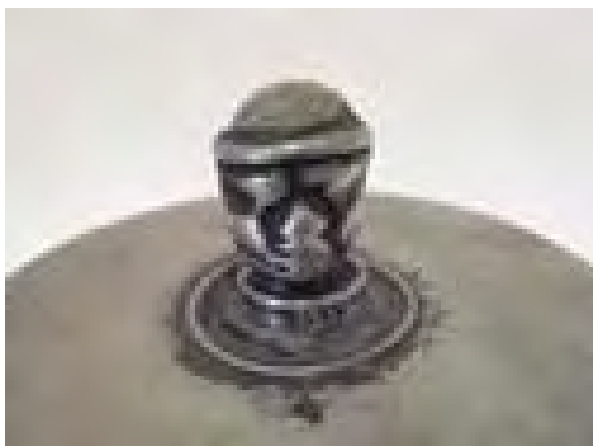
A little smaller than the one above, and certainly not blue - just the usual aged pewter patina despite the photos.



Two Tobacco Boxes/Jars with tobacco pickers heads with caps as knobs. Inside are lead pressers but it is unlikely these came with these boxes although the larger is a good fit, in the smaller of the two it is of a lesser diameter though aged.

The larger is cap to table 4 3/4", 4 1/2" in diameter and weighs 908 grams. Reference 9.74 The smaller is cap to table 3 3/4", 3 1/2" in diameter and weighs 580 grams

Somewhere it is suggested that these are typical of Leeds Yorkshire and may have been for tea? But an expert points out that no known tea collector is shown as this head image.





Lidded tobacco caddy with acorn knob and leaden weight inside.
Height to lip 3.8 inches, base 4 inches.



Lidded tobacco caddy with leaden weight inside.
Height to lip 2 7/8 inches, base 4 3/4 inches.



Tobacco caddy without lid or weight.
Height to lip 4 inches, base 4 1/4 inches. Marks on the
outside lip – Yates Birch and Spooner.



Small lidded pewter tobacco caddy with leaden weight
inside. Height to lip 2 9/16 inches, base 3 7/16 inches.



An Antique Pewter Tobacco Jar.
Victorian 4 ½” tall 4 “ foot diameter,
nice deep dark grey pewter patina,
finial in good condition weighs about 1
lb 3 ozs.

The two incised rings to the centre of the inside base
could make a collector wonder if this also was an
Abbot Pewter Tobacco Jar form Gateshead on Tyne
perhaps before 1864

The Sir Walter Raleigh Rectangular Tobacco Box – hoping to find details of
the lid and any presser here are the hinged molds recently found and a view of the recently released from the
mold cast sides of the box. An interesting hinged mold. Awaiting details of when made, what the lid was and
was there an insert presser to hold the “baccy” down? What did the lid look like – anyone got one?



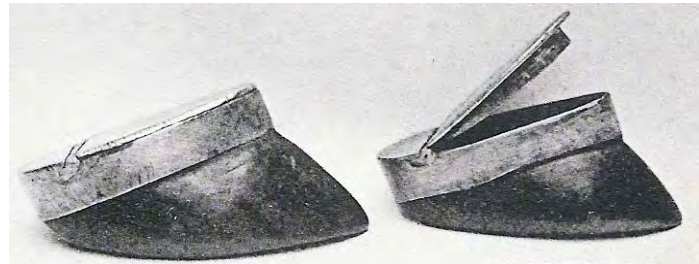
Here you see where the pewter was poured into the

Images here permitted by A E Williams of
Birmingham who own this mold.

www.pewtergiftware.com

mold in terms of the upright 'waste'.

**Tobacco Containers as illustrated by L Ingleby Wood published early 1900s
in - Scottish Pewter-Ware and Pewterers (combining horn and pewter)**



SNUFF BOXES



Sarah Price *Pewter Snuff Box*

This is a cast decorated snuff box by Shaw & Fisher of Sheffield said in Pewter of The Western World by Peter Hornsby to be circa 1845 but this example is exact as his



illustration number 1228 on page 355 other than it is engraved to the lid with the initials SP and inside to the under lid with the charming words –

Miss Sarah Price the Gift of a Friend 1830.
This measures 2 1/2" x 1 1/2" and is 5/8" deep and weighs 68 grams.



Steam Paddle and Sail Boat Snuff Box from the early 1800s. (USA)

This is a very charming unmarked snuff box showing a paddle boat steamer with sails and perhaps likely then to be American. A cast decorated piece size 2 1/2" x 1 1/2" x 5/8" deep and weighing some 72 grams.



Upside down view.....





Cast decorated ladies' shoe snuff, with heart cast into centre of side opening lid that works perfectly. In excellent condition, with light-grey original surface patina. 3" long, 1" wide, and 1" deep at the heel.



Large snuff box with portrait of George III. The medallion is raised above the lid, and is not a coin. The lettering around the bust is 'GEORGIUS III ° DEI ° GRATIA'. The initials 'I -C' below the bust probably refer to the maker. A very well made, and high status box in near mint condition with undamaged hinge, and lid that closes properly. The sides and base are plain. 3¼" long, 2¼" wide, and ¾" deep.



Attractively bright cut decorated ladies' shoe snuff by Broadhead, Gurney, Sporle & Co., Sheffield c1792-1800, with their small mark inside. In excellent condition with undamaged hinge, and lid that closes properly. 3¾" by 7/8" by 7/8" deep at heel.



Good medium tan colour with mahogany patches. 3½" by 1⅝" by 2" at deepest.



cast decorated shoe snuff, with side opening lid that works 3⅛" long, 1" wide, and 1" deep at the heel.



Unusually deep, and cast decorated all over. The lid has a central pierced heart in a wreath surrounded by battle emblems including drums, columns and lances with lid and hinge in working order. 2⅝" long, 1¼" wide, and ¾" deep



Very large bright cut decorated snuff box by Broadhead, Gurney, Sporle & Co., Sheffield c1792-1800 their large mark inside, undamaged hinge, and lid that closes properly. 4" by 2 $\frac{3}{8}$ " by $\frac{7}{8}$ " deep.



Large bright cut oval snuff box by unknown maker 'BC' his mark under base, and probably last quarter 18th century. In excellent condition with undamaged hinge, and lid that closes properly. 3" by 1 $\frac{3}{4}$ " by $\frac{5}{8}$ " deep.



Those were the days when people could not only smoke indoors, but also have smoking accessories to enhance their nicotine pleasures. This is an early 20th century pipe rest probably made in Sheffield by the Dixon works, but trading as Cornish Pewter, and retailed by Payne & Son, Oxford silversmiths. A 'high end' item in its day. 1 $\frac{3}{8}$ " maximum height, 3 $\frac{1}{4}$ " long and 1 $\frac{3}{8}$ " maximum width.



Large snuff or pocket tobacco box c1830-50. Decorated with engine turning and floral/leaf designs. In good condition, with well fitting lid. The bottom is decorated similarly but less attractively than lid, and all four sides are virtually identical. 3 $\frac{3}{8}$ " long, 2 $\frac{1}{8}$ " wide, and $\frac{3}{4}$ " deep



Very small snuff box with heart on lid that is cast decorated and engine turned all over. In excellent condition with undamaged hinge, and lid that closes properly. 1 $\frac{5}{8}$ " long, 1" wide, and $\frac{3}{8}$ " deep



Snuff box with shield on lid that is cast decorated and engine turned all over. In excellent condition with undamaged hinge, and lid that closes properly. 2 $\frac{3}{8}$ " long, 1 $\frac{1}{4}$ " wide, and $\frac{1}{2}$ " deep



Snuff box with two birds on lid, with cast decorated foliate designs and engine turned all over. In good condition, with undamaged hinge, and lid that closes properly. 2³/₈" long, 1³/₈" wide, and 3/4" deep.



Very small snuff box with lozenge on lid that is cast decorated and engine turned all over. 1⁵/₈" long, 7/8" wide, and 1/4" deep.



Rare 18th century cast pewter snuff bottle with screw-off lid in a remarkable state of preservation. Unmarked, with nice evidence of use, and at first sight might be mistaken for a travelling inkwell. Inside shows seamed construction about 3/8" above the base. An unusual item in excellent condition. 2¹/₈" high and 2¹/₄" max diameter.



Only 1¹/₈" diameter and 3/8" high, this circular snuff box is unusual having a screw-on lid. Nice detailing includes gadrooned edging to body.



Geometric patterned snuff box covered all over with engine turned decoration. In excellent condition, with undamaged hinge, and lid that closes properly. 3³/₈" by 2" by 5/8" deep.



Snuff box with rose on lid that is cast decorated and engine turned all over. In good condition, with undamaged hinge, and lid that closes properly. 2³/₄" long, 1¹/₂" wide, and 7/16" deep



Snuff box with cast decorated lid with central love birds and foliate outer border with two stylised vases, the bottom is decorated with raised cast dots that form two stylised interlocked hearts. A well made box in very nice clean used condition.



Showing the base of the snuff box with love birds on the lid. The base is decorated with raised cast dots that form two stylised interlocked hearts



Snuff box with cast decoration of bird in grapevines on the top and bottom. In mint, like new condition, with lacquered interior. 2³/₄" long, 1³/₈" wide & 3/4" deep.



Bright cut decorated ladies' shoe snuff by Richard Webster, Birmingham c1845-60 with his mark [R.W] [EB] [ST] [ER] (in four boxes) under the lid. In mint condition, with wonderful smooth original surface patina of light-medium grey colour. 3¼" long by 7⁄8" max width by ¾" deep at heel.



Showing the mark of Richard Webster of Birmingham under the lid of the shoe snuff.



Snuffbox in the form of a double-barrel pocket pistol, with lid opening underneath c1800-30. These are very hard to find especially in such good condition as this one, with the added attraction of excellent detailing such as the flintlock mechanism. Medium-grey original surface patina. 4¼" long and 1¼" maximum width.



Snuff horn 16½" from lid to tip, and made from a complete longhorn by Peter Durie, Aberdeen, Scotland c1788-1818 (OP1477) his 'DURIE' touchmark inside the hinged lid. Shown with a 'normal' Durie snuff mull for comparison. The nearly circular lid is 27⁄8" by 2¾", and the thistle tip is 2¼" long with a ¾" diameter terminal. An outstanding item in pristine condition. The horn is precisely drilled for a cord or chain in two places with identical 3⁄16" holes, which are so placed to ensure that when carrying the horn will be balanced.



Coffin type snuffbox c1830 with cast decorated lid comprising central oval surrounded by roses, thistles, grapes and leaves. In excellent condition, with working hinge and lid that closes properly. Medium-dark grey original surface patina. Hornsby shows an identical example at Fig 1228 p355 *PWW*, which he attributes to Shaw & Fisher of Sheffield. 3" long, 2 1/8" wide & 7/8" high.



Oval snuffbox with etched and cast decorated lid with central galloping horse surrounded by foliate design. Sides and base entirely covered with cast scrolling and foliate designs. In good used condition, with working hinge and lid that closes properly. Medium-dark grey original surface patina. 2 3/8" long, 1 1/2" wide & 3/4" high.



Rectangular snuffbox having cast decorated lid with central oval surrounded by geometric scroll with a fine line-engraved background. The sides have a scroll design and the base fine wavy machine line engraving. In good used condition, with working hinge and lid that closes properly. Medium-grey original surface patina. 2 1/8" long, 1 1/8" wide & 3/8" high.



Rare small example of an early pewter pipe with nice detailing of beading to bowl, and a 'grip' halfway down the stem. In excavated condition with traces of nature's gilding. 3 1/4" long with 3/4" bowl diameter



Snuffbox in the form of a double-barrel pocket pistol, with a punch decorated lid that opens underneath the barrel. These are very hard to find, and this good used example has an undamaged hinge, and tight fitting lid that closes properly. Attractive detailing to the flintlock mechanism. Medium-dark grey original surface patina. 4 1/2" long and 1 1/2" maximum width. c1800-30.