

CATALOGUES from THE LATER 20TH CENTURY A E WILLIAMS OF BIRMINGHAM

A.E.WILLIAMS PEWTER
*manufacturers of reproduction
 antique pewterware*

A. E. WILLIAMS 6-8, WELL LANE, BIRMINGHAM B5 5TE Telephone: 021-643 0273

SALLETTER MEASURE
 P145 1/2 GILL P146 3/4 GILL P147 GILL P148 GILL P149 GILL P150 GILL P151 GILL

CHAMBER POT
 P152

BELLED TANKARD
 P34 7/8" P35 1" P36 1 1/8" P37 1 1/4" P38 1 1/2" P39 1 3/4" P40 1 7/8"

OLD FASHION WHISKY MEASURE
 P153

STRAIGHT TANKARD
 P154 1 PINT P155 1 1/2 PINT

BARREL TANKARD
 P156

WHISKY MEASURE
 P157

WHISKY MEASURE
 P158

WHISKY MEASURE
 P159

WHISKY MEASURE
 P160

**CANDLESTICKS - EXCEPT P160 & P161
 ALL SOLD IN PAIRS**

WITH GRIP TRAY
 P162

OVAL BASE
 P163

12" TALL
 P164

CHAMBER
 P165

DIAMOND BASE
 P166

6" ROUND
 P167

3 1/2" TALL
 P168

P169 TULIP

P170 SMALL

P171 LARGE

P172 SHAPED GORLET

P173 SMALL

P174 MEDIUM

P175 LARGE

GORLETS

craftsmanship in pewter

Pewter has been made and enjoyed in England for many centuries. Craftsmanship and good design has won for English pewter the reputation of being the best in the world.

This range of pewterware is one of the finest in England, hand made by craftsmen using traditional methods and skills. Original gun-metal moulds in which the pewterware is cast are themselves now antique, some having been created over two hundred years ago.

The only difference between one of these tankards or candlesticks and genuine antique pewterware are the dates they were made and the fact that the finer modern metal is now completely lead-free.

The patina of age and lustre of old pewter is now achieved on this range by a unique skilled operation. Old touchmarks are also carefully struck to give authentic detail to each piece of pewterware.

These classic shapes in heavy quality cast pewter speak eloquently for themselves as beautiful examples of the modern pewterer's art and craft.



The Finest Traditional Cast
PEWTER WARE
 In all England



Fine quality hand-crafted pewterware has been part of the English scene for centuries. The classic shapes and mellow lustre of *Candlesticks, Goblets, Plates* and *Tankards* have been enjoyed in homes and taverns, down through the ages, and are still available to us today.

A unique range of beautiful pewterware that would add character to any home, continues to be cast from the *antique moulds* of the master craftsmen of A. E. Williams using skills and traditions handed down since 1779. These skills are also used in the manufacture of the James Yates collection Est 1780.

And this is why A. E. Williams command the largest collection of antique moulds in the world today.

*The end is easily foretold:
 When every blessed thing you hold
 Is made of silver or of gold,
 You long for simple pewter.*



















A. E. WILLIAMS 6 WELLS LANE DICHBETH BIRMINGHAM B5 5TE ENGLAND



To produce Traditional Pewterware (Holloware) Master Craftsmen, original moulds and the tradition and skill of the Oldest Family Firm of Pewterers in the UK are required.

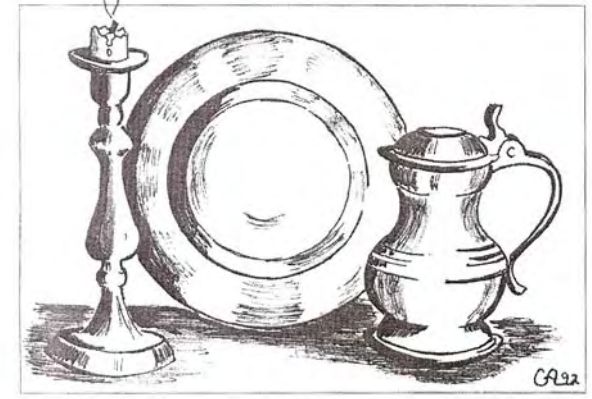
A. E. Williams (Est. 1779) fulfil all these criteria. The company produces pewter which is 100% HAND CRAFTED, every piece given individual care and attention by MASTER CRAFTSMEN, using moulds in some cases dating back to the 17th Century. The craftsmanship of the A. E. Williams company is the result of over TWO HUNDRED years of tradition, care and pride, reflected individually, in the FINEST PEWTER available in the U.K.



<p>BALUSTER MEASURE 560 561 562 563 564 565 567 1/4 GILL 1/2 GILL 3/4 GILL 1 GILL 1 1/2 PINT 1 PINT 2 PINT</p> 	<p>CHAMBER POT 529 (Special Order Only)</p> 	<p>BELLIED TANKARD 545A 546A 547A 548A 1/2 PINT 1 PINT 1 1/2 PINT 2 PINT LIDDED 545 546 547 548</p> 				
<p>STRAIGHT TANKARD 554 1 PINT</p> 	<p>BARREL TANKARD 530 1/2 PINT</p> 	<p>HARVESTER MEASURE 570 571 572 573 574 1/2 GILL 1 GILL 1 1/2 PINT 1 PINT 2 PINT</p> 				
<p>WITH DRIP TRAY 248</p> 	<p>OVAL BASE 243</p> 	<p>12" TALL 251</p> 	<p>CHAMBER 246</p> 	<p>DIAMOND BASE 249</p> 	<p>8" ROUND 244</p> 	<p>3 1/2" TALL 245</p> 
<p>OCTAGONAL CANDLESTICK 499</p> 	<p>TUDOR GOBLET 1/2 PINT 581 1 PINT 582</p> 	<p>CHATSWORTH GOBLET 580 SMALL 579 LARGE</p> 	<p>TULIP 576</p> 	<p>BARREL MEDIUM 578</p> 		

A. E. Williams
6, Well Lane, Digbeth, Birmingham B5 5TE
Telephone: 0121-643 4756 • Fax: 0121-643 2977

The Finest Traditional Cast
PEWTER WARE
In all England



Fine quality hand-crafted pewterware has been part of the English scene for centuries. The classic shapes and mellow lustre of *Candlesticks, Goblets, Plates and Tankards* have been enjoyed in homes and taverns, down through the ages, and are still available to us today.

A unique range of beautiful pewterware that would add character to any home, continues to be cast from the *antique moulds* of master pewterer **Thomas Williams** by craftsmen using skills and traditions handed down since 1797.

A free illustrated catalogue of the pewterware produced from these *historic* moulds is available from :~

Clive Alexander,
22, Ferndale Avenue,
Walthamstow, London, E17 9EH. Tel: 081 520 5232

BALUSTER MEASURE
 P145 1/2 GILL P146 3/4 GILL P147 1 GILL P148 1 1/4 GILL P149 1 1/2 GILL P150 2 GILL P151 3 GILL

CHAMBER POT
 P173

BELLIED TANKARD
 P174 P175 P176 P177 P178 P179 P180 P181 P182 P183

DUCK & HEN WHISKY MEASURE
 P184 P185 P186 P187 P188 P189 P190 P191 P192 P193

STRAIGHT TANKARD
 P194 P195 P196 P197 P198 P199 P200 P201 P202 P203

BARREL TANKARD
 P204 P205 P206 P207 P208 P209 P210 P211 P212 P213

WHISKY MEASURE
 P214 P215 P216 P217 P218 P219 P220 P221 P222 P223

WHISKY MEASURE
 P224 P225 P226 P227 P228 P229 P230 P231 P232 P233

WHISKY MEASURE
 P234 P235 P236 P237 P238 P239 P240 P241 P242 P243

TAPRIT HEN
 SMALL P435 MEDIUM P436 LARGE P437

MONKS WINE FLAGON
 P438

HARVESTER MEASURE
 P1 P2 P3 P4 P5
 1/2 GILL 1 GILL 1 1/2 GILL 2 GILL 3 GILL

LIDDED BALUSTER
 P439 P440 P441 P442 P443 P444 P445 P446 P447 P448

TAVERN TANKARD
 P449 P450 P451 P452 P453 P454 P455 P456 P457 P458

BELLIED TANKARD LIDDED
 P459 P460 P461 P462 P463 P464 P465 P466 P467 P468

MONKS MEASURE
 P469 P470 P471 P472 P473 P474 P475 P476 P477 P478

BEADED TANKARD LIDDED
 P479 P480 P481 P482 P483 P484 P485 P486 P487 P488

ALL CAPACITIES ARE APPROXIMATE

Thomas Williams
 1780 - 1835

Richard Williams
 1835 - 1865

Ernest Williams
 1865 - 1900

Albert Williams
 (Williams & Day)
 1900 - 1945

Thomas Williams
 1945 -

CANDLESTICKS - EXCEPT P05 & P49
 ALL SOLD IN PAIRS

WITH GRIP TRAY
 P104

OVAL BASE
 P138

12" TALL
 P02

CHAMBER
 P05

DIAMOND BASE
 P50

8" ROUND
 P81

3 1/2" TALL
 P53

P167 TULIP

P168 SMALL

P167 LARGE

P161 SHAPED GODGET

P152 SMALL

P163 MEDIUM

P160 LARGE

WAVY PLATE
 P02 LARGE P04 SMALL

PLAIN PLATE
 P13 P14 P15 P16
 6" 7" 8" 9"

BEADED PLATE
 P14 P15 P16 P17
 7" 8" 9" 10"

SMALL FRUIT BOWL
 P27

SMALL FRUIT FLAIR BOWL
 P27

SMALL LADLE
 P184

GRANNY CANDLESTICK
 P49

QUAICH BOWL
 P22 P23 P31
 SMALL MEDIUM LARGE

RICE BOWL
 P60

BOWL WITH 3 LIONS HEAD FEET
 P25

SMALL FRUIT FLAIR BOWL
 P27

SMALL LADLE
 P184

GRANNY CANDLESTICK
 P49

QUAICH BOWL
 P22 P23 P31
 SMALL MEDIUM LARGE

SMALL FRUIT FLAIR BOWL
 P27

SMALL LADLE
 P184

GRANNY CANDLESTICK
 P49

QUAICH BOWL
 P22 P23 P31
 SMALL MEDIUM LARGE



THE BELTAIN COLLECTION
of Quart Tankards



P151



P38
P40



P203

"I the spirit of the woods and fields am awake".

The pagan festival of Beltain celebrates the rebirth of spring on the 1st day of May -



THE OLD LONDON COLLECTION
of Beaded Ale Measures

Many of these beautiful tankards were used in the 'Tap Rooms' of our ale houses. They were engraved to proclaim their house of origin 'The Three Cranes', 'Queen Hythe' There are many to be found in antique shops today.



P51



P165



P166



P144



P143



P203





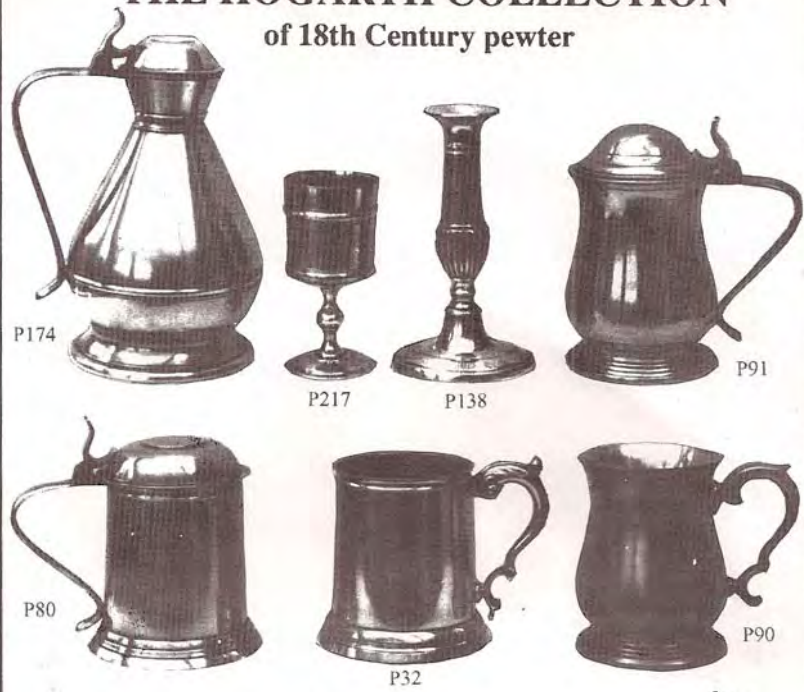
THE OLD OXFORD COLLECTION of Bellied Tankards



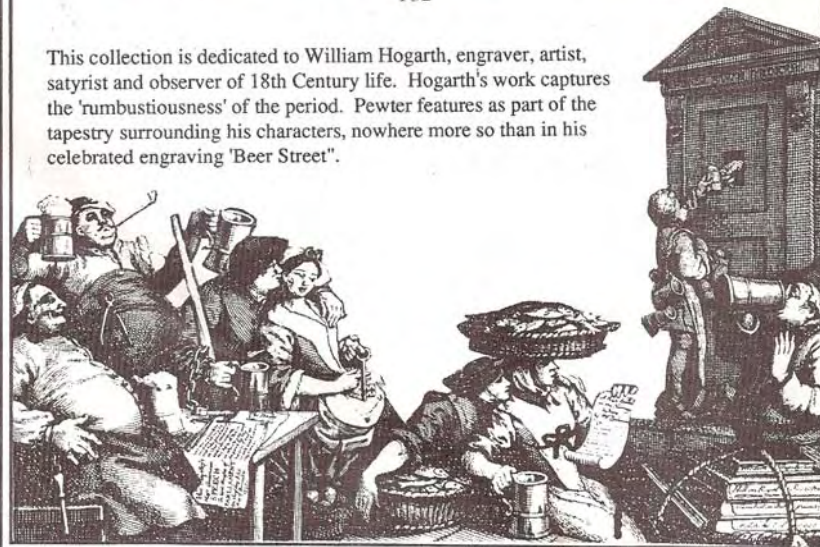
This truly unique set of bellied tankards has a timeless quality in its proportions. It represents a high point of pewter design. Associated with the City of Oxford in the last century, many a Don would have enjoyed partaking of 'small ale' in such a vessel.



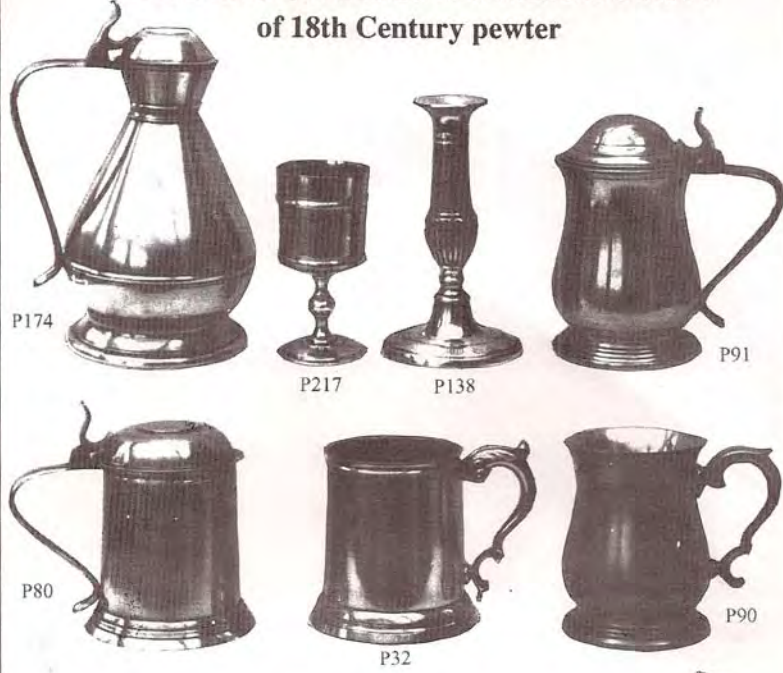
THE HOGARTH COLLECTION of 18th Century pewter



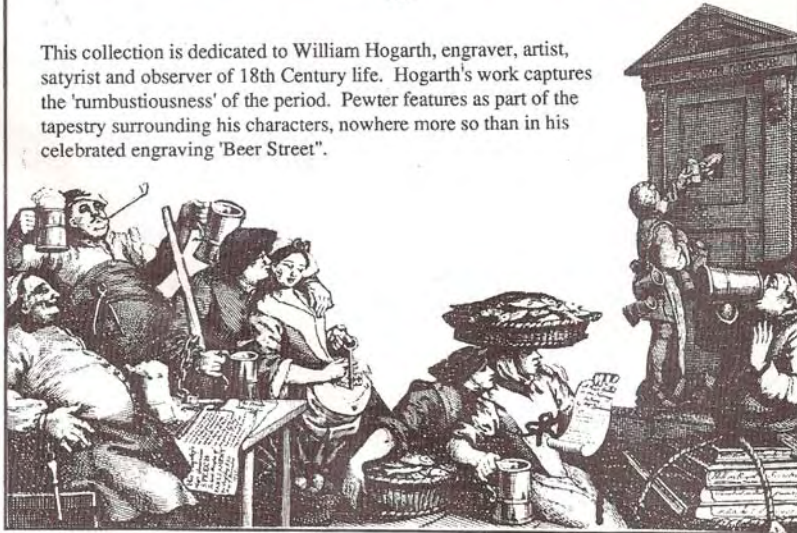
This collection is dedicated to William Hogarth, engraver, artist, satyrist and observer of 18th Century life. Hogarth's work captures the 'rumbustiousness' of the period. Pewter features as part of the tapestry surrounding his characters, nowhere more so than in his celebrated engraving 'Beer Street'.



THE HOGARTH COLLECTION of 18th Century pewter



This collection is dedicated to William Hogarth, engraver, artist, satyrist and observer of 18th Century life. Hogarth's work captures the 'rumbustiousness' of the period. Pewter features as part of the tapestry surrounding his characters, nowhere more so than in his celebrated engraving 'Beer Street'.



THE OLD BREWERY COLECTION



HARVESTER IRISH WHISKY MEASURES

The design of these beautiful Irish whisky measures which are very similar to the west country 'Haystack measure' are traceable back to the moulds of Joseph Austin & Son Cork where they were first produced in the middle of the 19th century.



P1
P2
P3
P4



P169

Baluster Measure Lidded



P170



P49



THE CHARLES I COLLECTION

of 17th Century pewter

This carefully selected collection of pewterware represents that which would have been found garnishing the tables and dressers of the houses and taverns in the turbulent times of the 17th Century.



P43S



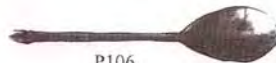
P142



P141



P16



P106



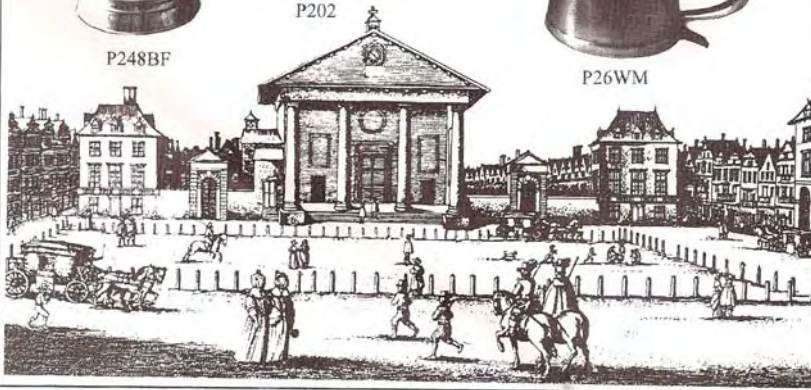
P248BF



P202



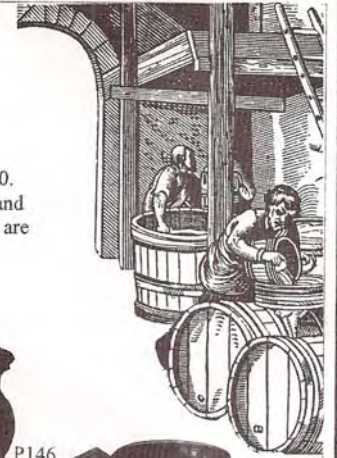
P26WM



THE OLD BREWERY COLECTION

OF BALUSTER MEASURES

Baluster measures can be traced back to about 1800. They were pre-imperial wine and spirit measures, and are still used as spirit measures in pubs today. They are very popular as tankards.



P145



P147



P146



P148



P164



P149



P151



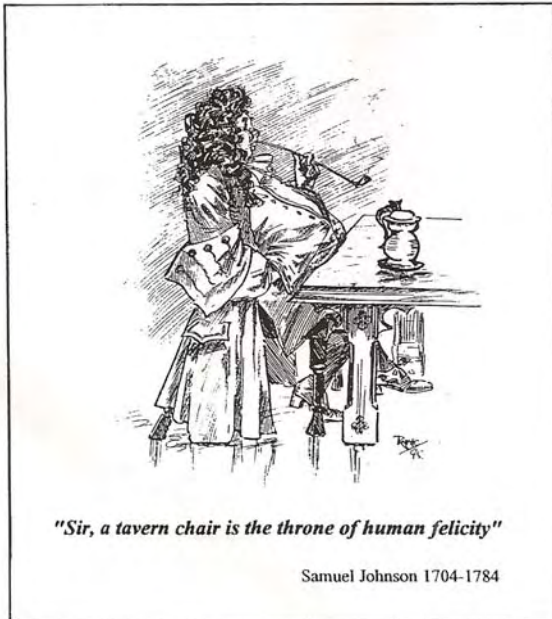
P150

1993

PEWTER PRICE LIST

Old Brewery Measures

P145	Quarter Gill Baluster Measure	£ 6.50
P146	Half Gill Baluster Measure	£ 8.50
P147	Third Gill Baluster Measure	£ 8.50
P148	Gill Measure Baluster Measure	£10.00
P149	Half Pint Baluster Measure	£17.00
P170	Half Pint Baluster Measure Lidded	£21.00
P150	Pint Baluster Measure	£21.00
P169	Pint Baluster Measure Lidded	£25.50
P151	Quart Baluster Measure	£35.00
P1	Half Gill Harvester Irish Whisky Measure	£ 8.50
P2	Gill Harvester Irish Whisky Measure	£10.00
P3	Half Pint Harvester Irish Whisky Measure	£13.00
P4	Pint Harvester Irish Whisky Measure	£18.50
P164	Candlestick With Drip Tray	£25.00
P159	Snuffer	£ 6.50
P49	Granny Candlestick	£10.00



"Sir, a tavern chair is the throne of human felicity"

Samuel Johnson 1704-1784



Cleaning and Caring for Pewter

Many people have old pieces of pewter that they would like to clean. Their are two schools of thought about cleaning pewter. One is, if a piece of pewter has acquired a patina of age it should not be cleaned. Cleaning of antique pewter can devalue it. However, as a guide cleaning should only be carried out to the extent that the pieces have sufficient polish to show at least some reflected light. The other school of thought is that nothing looks finer than a display of gleaming pewter. If the pewter is used, then it might be a good idea to clean it. In any event, the final decision is up to the owner.

If cleaning is required, start by gently removing the surface dirt and grime with soap suds and a soft brush. Wash off and inspect. Some pewter pieces get a scale deposit. This can be removed by diluting some spirits of salt or caustic soda in water. The experts recommend boiling this solution and suspending the pewter in the pan. Do not let the pewter melt on the pan. Wash off with water. Another method is to work at the scale with a preparatory paint stripper. Work on a small test area first. Be sure to protect you skin and eyes. Experts all advise against using a mechanical burnishing device. Beware of over cleaning, aim to remove enough detrimental corrosion to retain the character and tone, you must be the judge.

Once clean, the pewter can be polished. This can be done with most metal polish and a soft cloth. 'Solvo Autosol' or 'T-Cut' for car body work is very suitable. It is often better to clean and polish in several stages rather than all at once. Modern pewter manufacturers recommend that new pieces are washed in warm water and washing-up liquid, and then given a gentle polish.

For further information on collecting and caring for pewter may be found in the following books:-

Let's Collect British Pewter	C. A. Peal	Jarrold
Phaidon Guide to Pewter.	Vanessa Brett	Phaidon
Pewter, Copper & Brass	A. Negus	Hamlyn
Pewter	Gabriele Sterner	Studio Vista
Antiques, and their Values - Pewter		Lyle
Pewter a Collectors Guide	K. Ullyett	Muller
Antique Pewter of the British Isles	Michaelis	Dover
Chats on Old Pewter	Masse/Michaelis	Dover
Pewtersmithing (Techniques)	Hull/Murrell	Batsford

THE MILKMAIDS GARLAND 1745

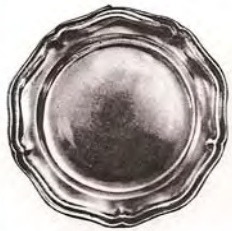
And now a throng at eve do meet,
Fatigued and dancing thro' the crowded street,

Their shoes embrown'd at once with dust and clay,
with whitethorn loaded ' carried high for may

On milk-pail reared the borrow'd salvers glare,
Topp'd with tankards which two porters bear,

To sound of pipe and drum they toil o'er rugged stones,
while joyful milkmaids dance with aching bones.

PIE CRUST PLATE
Large Small



BEADED PLATE
7" 8" 9" 10"

PLAIN PLATE
P13 6" . P16 9"



FLARE BASE BOWL



P25 BOWL WITH THREE
LIONS HEAD FEET.



P29 30 31 QUAICH
LG MED SMALL



