

## MOLDS AT A E WILLIAMS OCT 15 2009 –

### SPOONS, DUNCOMBE PLATES, SLUSH ACANTHUS HANDLES, BEER BARREL TAP, WALL SCONCES, PORRINGER EAR AND OTHERS

1 – Dog Nose Spoon Mold – length of spoon 19.2cms width of bowl 4.5cms (These were first made from 1700-1730)





2 – Single Drop Spoon – length 7.7 cms width of bowl 4 cms (likely made 1800-1900)





3 – Small Spoon with Petalled Drop – length 14.6cms width 3.9 cms (likely made 1800-1900)





4 – ‘Thames’ Spoon – (quote – Like one found in the Thames – Sam/David Williams) (likely made after 1900 in the 20<sup>th</sup> Century)





5 – 'Well' Spoon, acorn knob with cast spoon – length of cast spoon 6 cms width 4.7cms (likely made after 1900 in the 20<sup>th</sup> Century)





6 – Medium Spoon with petalled drop – length 19 cms width 4.3 cms (likely made 1800 – 1900)





7 – Larger Spoon with 3 Petalled drop – length 22 cms width 5.2 cms (likely made after 1800)





8 – Beaded Edged teaspoon with cast spoon – length of cast spoon 10.7 cms width 2.2cms (likely made after 1800)

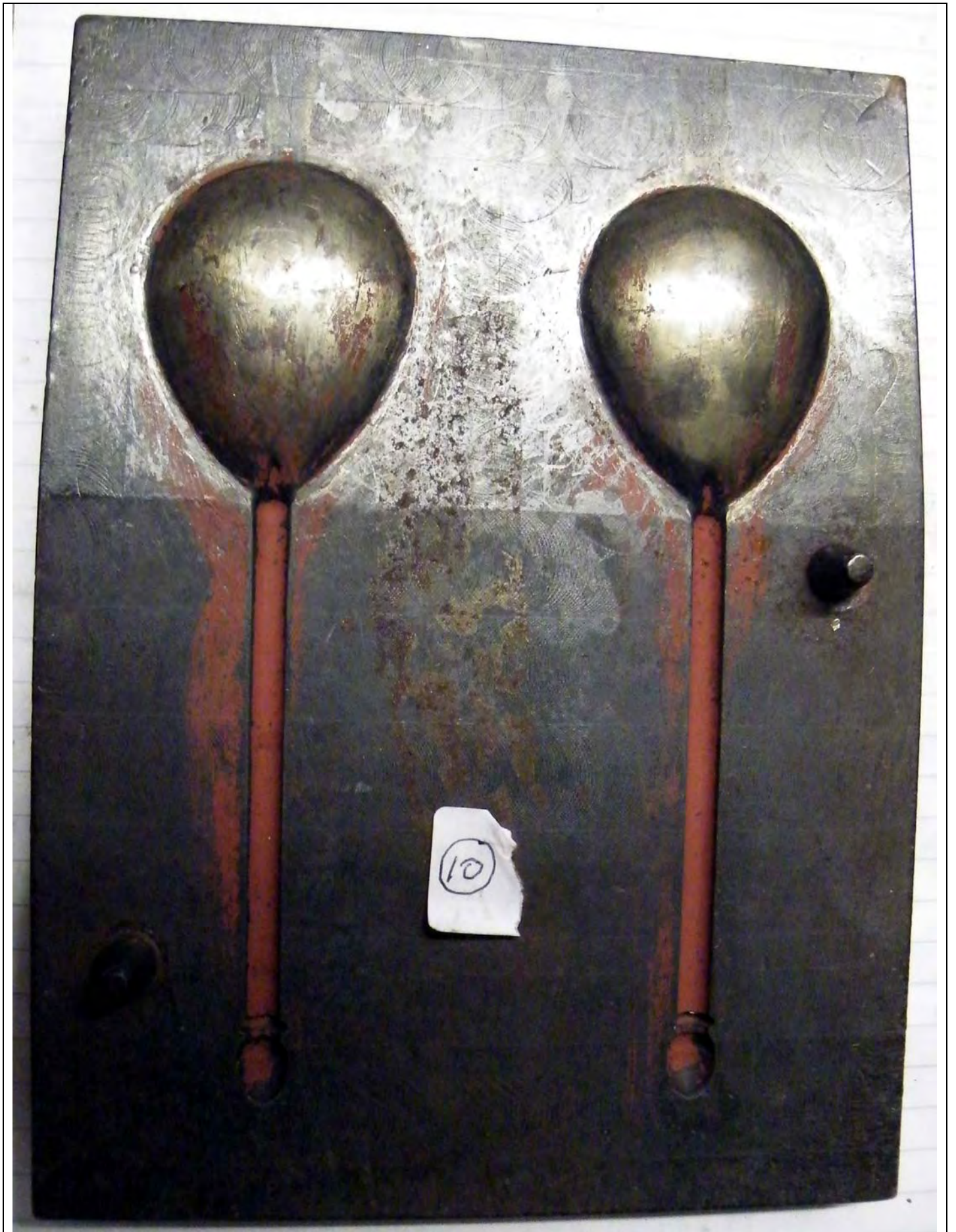


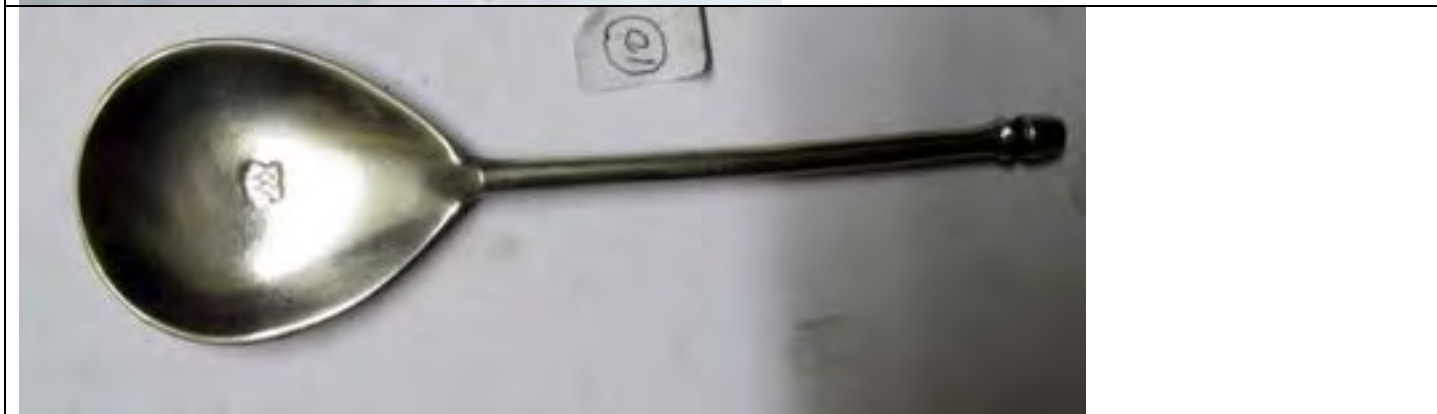
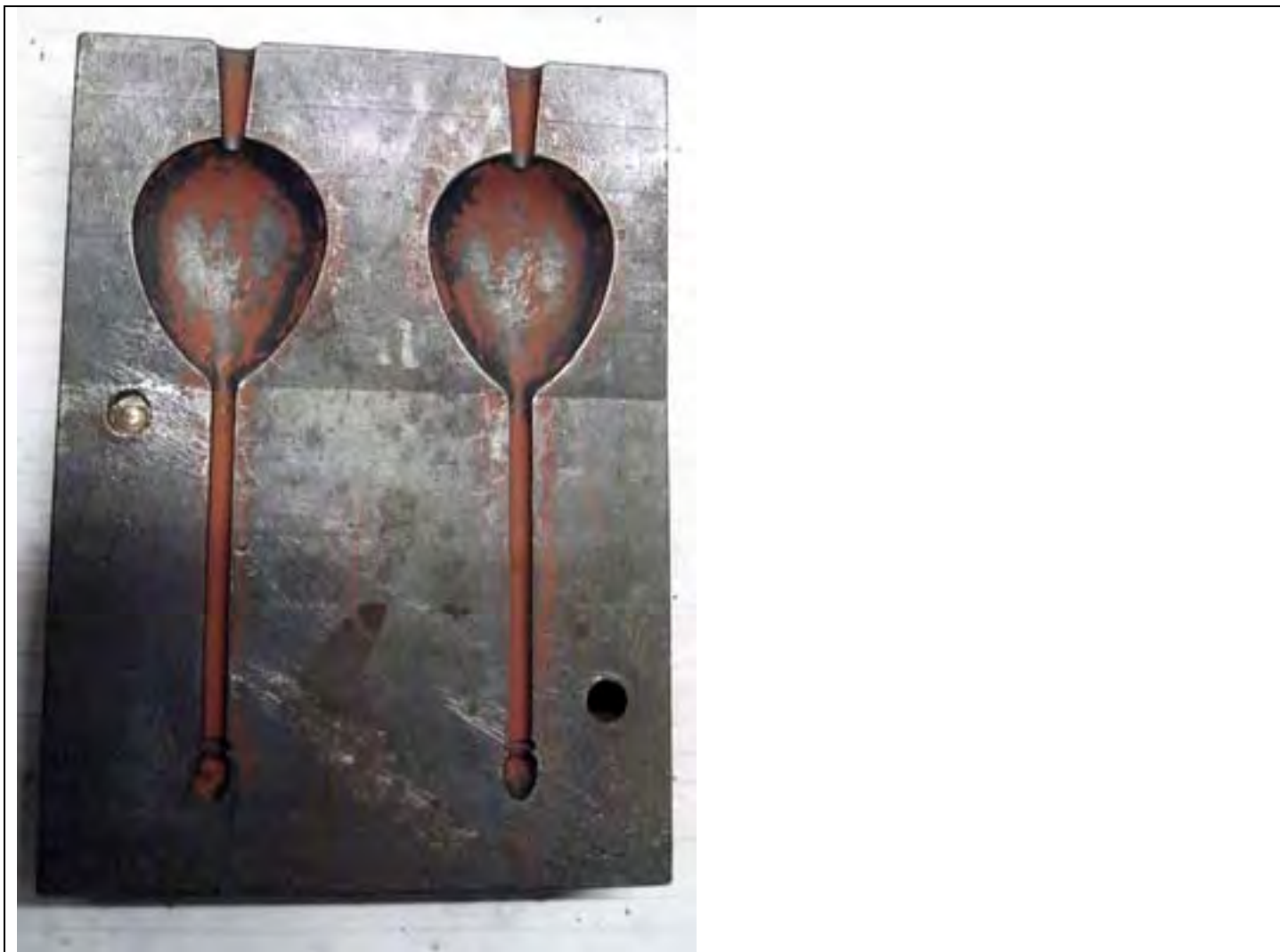


9 – Large teaspoon with fancy drop and beaded edge – length 13.5 cms width 3.1 cms (likely made after 1800)



10 – Acorn Knop double mold – modern – length of cast spoon 15.3 cms width 4.5 cms this is a steel mold likely made in the middle 1900s. Q quote from family history “ I’m not casting these one at a time”





11 – ‘Old English’ Porringer Ear – 6.1 cms long 6.7 cms at widest point



12 – 3 part bronze ½ Candlestick mold for a style known as The Queen Anne Candlestick. The design was popular in that era, the base to this candlestick is oval similar to that of tea pots found then. It is not clear when this mold was made.





HOLLOW OR SLUSH HANDLES FOR MUGS

The Pewter must be poured out from the wider opening as fast as possible.





A WALL SCONCE PART MOLD



AS BEER ENGINE MAKERS (THE PUMP ON THE BAR DOWN TO THE BARREL IN THE CELLAR)  
THEY ALSO MADE THE TAPS FOIR THE BARRELS AS SHOWN BELOW -



NITRILE MOLDS AS USED IN 2009 – THIS MOLD IS MAKING 20,000 (EVENTUALLY) SMALL TOKENS



THE MOLDS USED BY AND INHERITED FROM THE JOHN DUNCOMBE BUSINESS – WITH THE EARLIEST CARRYING A DATE BEING 1729





A GALLON HAYSTACK MOLD IN TWO PARTS – THERE WOULD PERHAPS BE A THIRD FOR THE HANDLE. (OR WAS IT A STRAP?)





THE RALEIGH TOBACCO BOX – A HINGED MOLD MAKING THE EIGHT SIDES OF THIS OCTAGONAL BOX IN ONE JOINED PIECE – ALTHOUGH SAID ELSEWHERE TO BE 17<sup>TH</sup> CENTURY FAR MORE LIKELY TO BE PRE-VICTORIAN SAY EARLY 1800s





**THE RALEIGH TOBACCO BOX**

17th Century

4549

*The scene on the main panel shows a boy who, though well intentioned, is a bit at odds with his task. For he seems intent on dousing Sir Walter Raleigh with water, just as the gentleman has gotten his clay pipe to draw.*

*The octagonal box is 5¼ inches by 4 inches through the base, and measures about 4 inches high to the head of the reclining lion atop the lid.*

A JAMES YATES ONE PINT BELLIED MUG MOLD



TWO UNKNOWN BOWL MOLDS – THOUGH IS THE BOTTOM ONE A BOWL OR SOMETHING ELSE





A PILGRIMS BADGE REPLICA MOLD AND THE STYLE MADE TODAY





### Canterbury Pilgrim Token St Thomas Becket

This Token is cast from a bronze Pilgrim badge mould, which is an exact replica of the original. The original mould is made of stone and was found near Kingston on Hull; it was donated in 1890 to the British Museum and it is still there. It dates to the 14th century, and from the mould would have been cast pewter badges; bought as souvenirs by pilgrims to the shrine of St Thomas Becket in Canterbury Cathedral.

A WAVY EDGED PLATE MOLD



A BOX OF PUNCHES FOR PUNCH MARKING OF PEWTER PIECES  
AFTER MAKING  
ADDING INFORMATION AS TO WHO OR WHERE MADE, SIZE ETC.  
(A POOR PHOTOGRAPH)  
THESE ARE LIKE OLD FASHIONED METAL CHISELS BUT SHORTER  
AND THE SHARP END IS WHERE THE DESIGN WORK TO MAKE THE  
MARK IS TO BE FOUND.

