

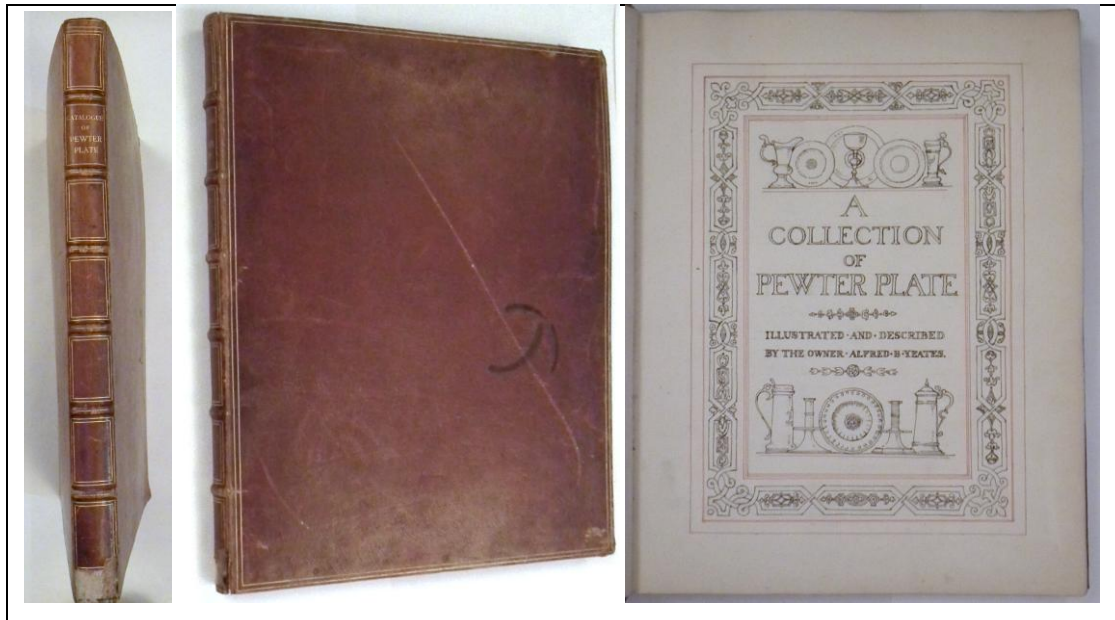
The Alfred B Yeates Collection Books - the missing pages and some photos

With thanks to Alex Neish this writer has been able to see and photograph the pages that are missing from the copies published on this website. The previous article shows a monotone copy of both books whereas the photographs will give the reader an increased appreciation of what a fine work these collection books were.

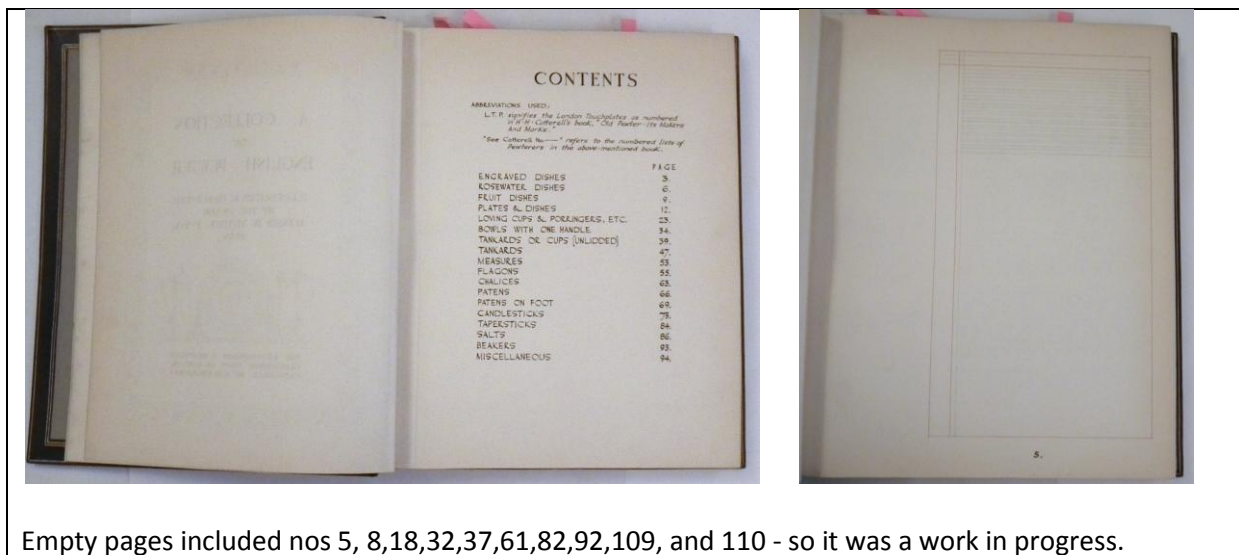
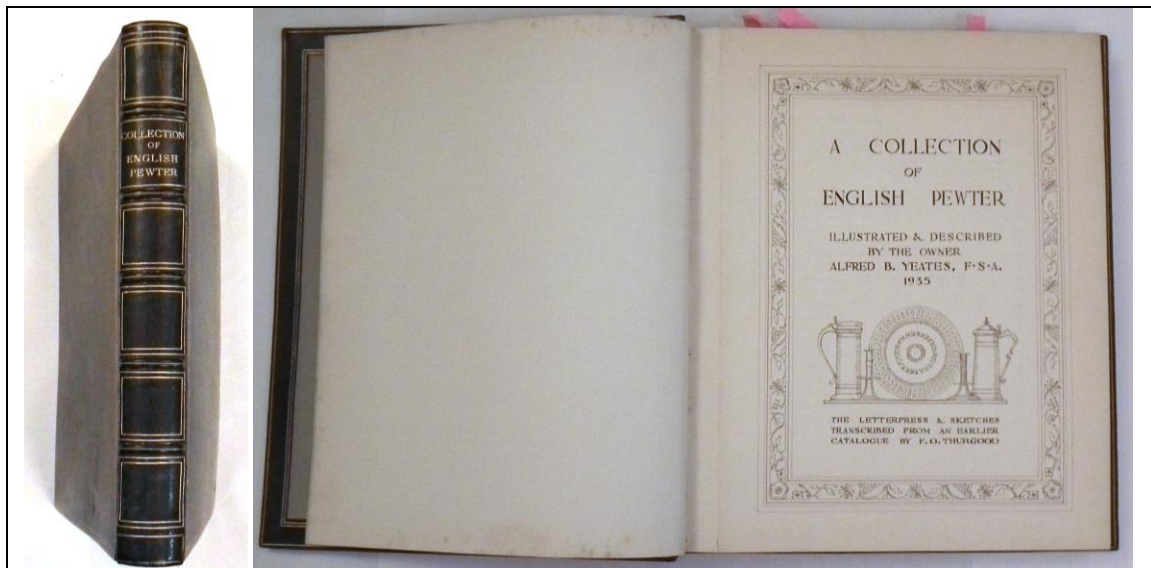
In the first book (size 41cmsx32.5cmsx4cms) it was thought that the illustrations of spoons numbered 16 -32 were missing but they are not - they are simply out of place and can be found after spoon 80. (The order of a few others varies also after spoon 59).

In the second book (size 35cmsx29.5cmsx4cms) dated 1935 a number of the apparently missing pages are in fact blank pages as this was a work in progress and some pages were left blank perhaps for intended purchases. So if the photo of a missing page is not shown here it is because it is blank (that is ruled for an entry but unwritten).

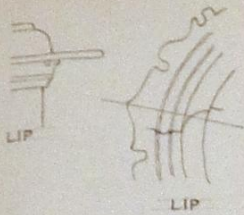
The First Book - undated but before 1935 - likely from the mid 1920s.



The second book dated 1935 (onwards)



Empty pages included nos 5, 8, 18, 32, 37, 61, 82, 92, 109, and 110 - so it was a work in progress.



DETAIL OF THE BASE

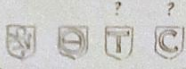


58. TANKARD

PROBABLY ENGLISH THOUGH FOUND IN HOLLAND. SIMILAR TO No. 57 BUT OF LATER DATE. HEIGHT 6'8 IN. DIAMETER AT LIP 4'1 IN. AND AT BASE 5'8 IN. THE LID IS ENGRAVED WITH FLOWERS AND THE BARREL WITH A PORTRAIT OF WILLIAM III AND INITIALS W.R., EACH LETTER IS CROWNED, ALSO THE LION AND UNICORN AND THE ROSE AND THISTLE. MAKER'S TOUCH, SEE BELOW, INSIDE ON BASE. "SILVER MARKS" (ALSO SEE BELOW) AND X ON OUTSIDE OF THE LID. OWNER'S INITIALS ^WI^R ALSO ^GG^B WITH DATE 1698, ALSO A FURTHER STAMP ^MH. BOUGHT FROM MRS. HARRISON OF SHIPLAKE COURT, HENLEY. SEE ILLUSTRATION, P. 45.



TOUCH. See Cotterell 5531A.



"SILVER MARKS"

59. TANKARD



THUMBPIECE



TOUCH

ENGLISH. ABOUT 1730. HEIGHT 6'4 IN. DIAMETER AT BASE 4'3/4 IN. WITH A DOMED LID AND SCROLL THUMBPIECE.

OWNER'S INITIALS MIL ON THE RIM OF THE LID. MAKER'S TOUCH, RICHARD GOING, INSIDE IN CENTRE OF THE BASE, SEE MARGIN; A BRISTOL PEWTERER 1715-64.

BOUGHT IN LONDON. SEE ILLUSTRATION, P. 46.



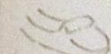
APPROX. HALF S.



LIP BROKEN



THUMBPiece



END OF THE HANDLE.

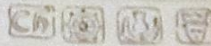


BASE

63. DIMINUTIVE TANKARD

ENGLISH. SIMILAR TO No. 57 BUT WITH DIFFERENT THUMBPIECE AND A FLATTER LID. HEIGHT 2 3/4 IN. ENGRAVED LINES ON TOP OF LIP AND ABOVE BASE. SIGNS OF ELABORATE ENGRAVING TO THE OUTSIDE AND TO THE LID. NO MAKER'S TOUCH BUT 'SILVER MARKS' ON THE LID AND UNDER LIP OUTSIDE. PROBABLY;

SEE ILLUSTRATION, P. 46.



64. TANKARD



HALF FULLSIZE



END OF THE BILLET



HANDLE


ENGLISH. C.1760. HEIGHT TO TOP OF LID 6 IN. DIAMETER OF BASE 3 7/8 IN. DOMED LID AND PLAIN SCROLL BILLET AND HANDLE ENDING IN A ROUNDED KNOB. A NARROW RAISED FILLET ROUND THE DRUM. MAKER'S TOUCH INSIDE ON THE BASE, "A HARP WITH SH O R... OVER, IN A SMALL CIRCLE."




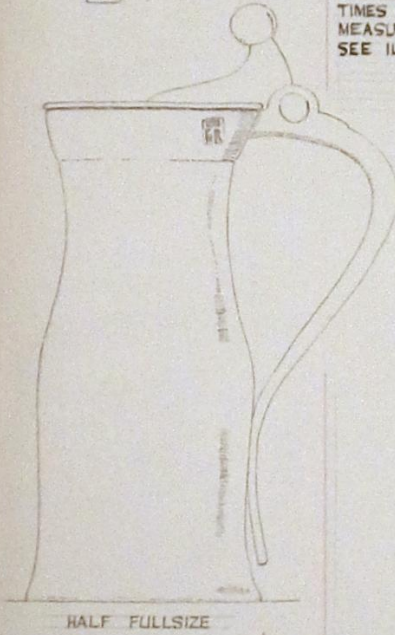
No. 66.

41
521

MEASURES

 TOUCH P/S
*A King's head (? Henry VIII) with
sceptre and initials A.M.*

 EXCISE STAMP
ON THE RIM.



66. MEASURE

A FINE ENGLISH TUDOR PIECE OF HALF-GALLON SIZE, AT PRESENT THE ONLY ONE KNOWN. HEIGHT FROM BASE TO LID IS $9\frac{3}{4}$ IN. DIAMETER OF BASE $4\frac{9}{16}$ IN. DIAM. AT LIP $4\frac{3}{8}$ IN. THE BALL TERMINATION TO THE THUMBPIECE IS UNUSUAL. THE MEASURE STAMP ON RIM, SEE MARGIN, IS PROBABLY OF THE REIGN OF HENRY VIII. THE MAKER'S TOUCH, AS MARGIN, IS STAMPED FIVE TIMES ON THE LID. SEE COTTERELL 5769, ON A MEASURE OF WEDGE-SHAPED TYPE. SEE ILLUSTRATION, P. 52, & 20.

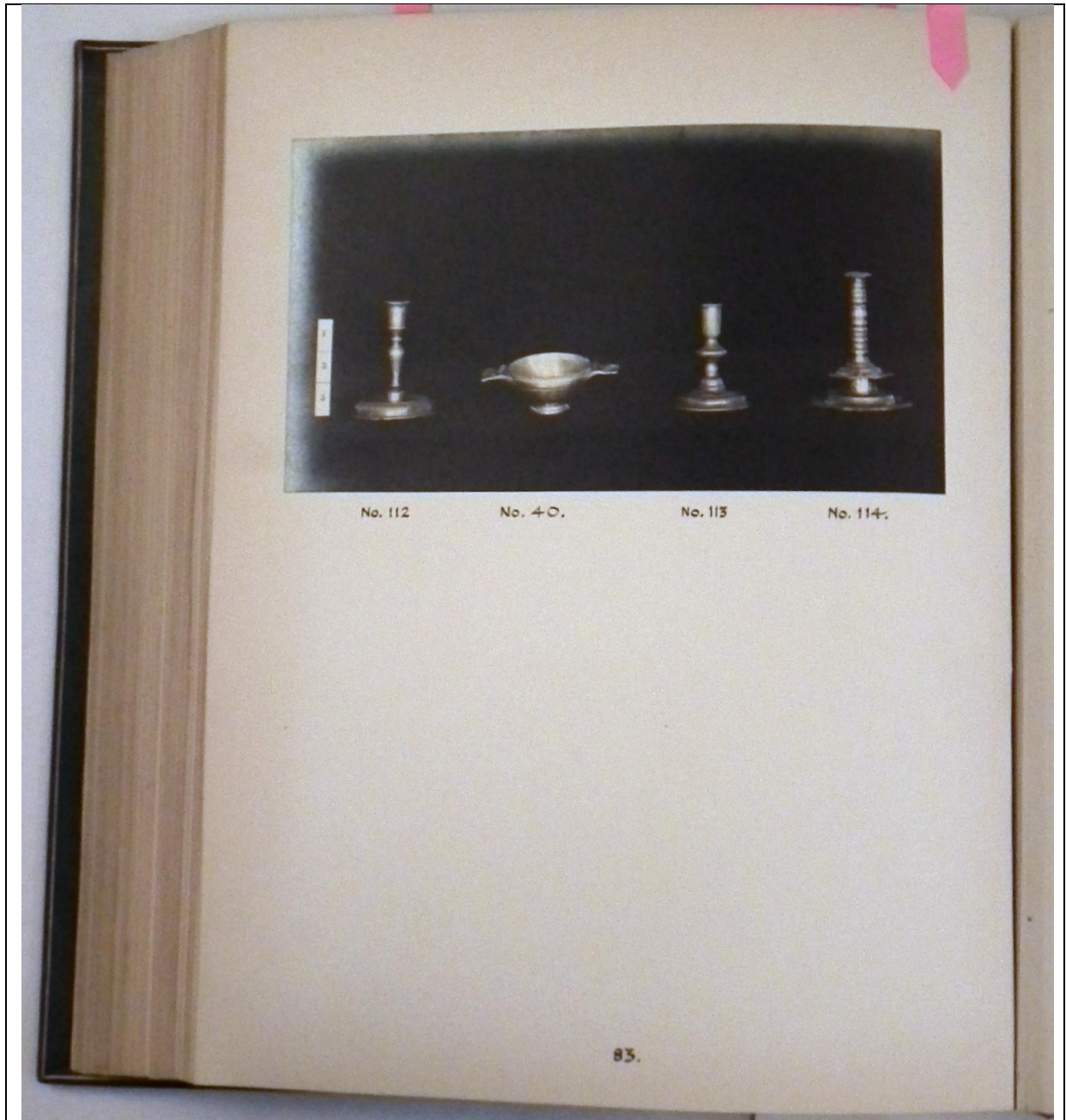
IN THE VICTORIA AND ALBERT MUSEUM THERE IS A QUARTER GALLON MEASURE OF THIS TYPE WITH A BALL ON WEDGE THUMBPIECE, AND A CROWNED H.R. MARK AND BISHOP'S MITRE TOUCH ON THE LID.

90A PATEN

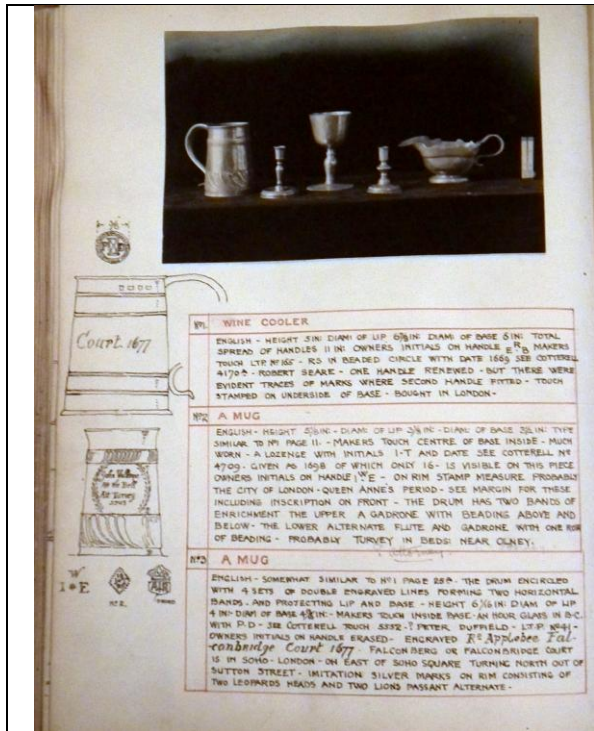
OR PLATE. DIAMETER 8⁷/₈ IN. SHALLOW CIRCULAR SINKING
3/4 IN. DEEP AND 4⁷/₈ IN. DIAMETER.
FOUR 'SILVER MARKS' ON FACE OF RIM, EACH WITH A
LION PASSANT. MAKER'S TOUCH; A BEADED CIRCLE
WITH FLEUR DE LYS AND INITIALS T·B AND SMALL
'FILLING IN' PIECES ABOVE. SEE COTTERELL 5468,
ABOUT 1680, MAKER UNKNOWN.

90B PATEN

OR PLATE. DIAMETER 7 IN. WITH A SHALLOW SINKING
1/8 IN. DEEP AND A 1 IN. RIM.
MAKER'S TOUCH; TUDOR ROSE AND CROWN IN BEADED
CIRCLE WITH INITIALS I·R (?).



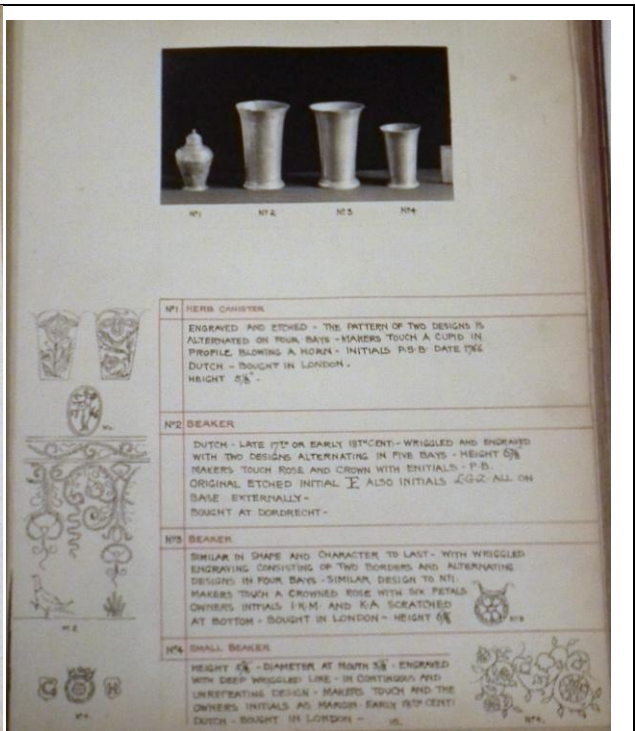
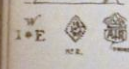
The above covers the missing pages - the following are repeats of pages shown in the main document put in here as photographs simply to emphasise the fine quality of this work and these books showing the collection of and likely by Alfred B Yeates. These following examples are taken as it happens from the early book -



N1. WINE COOLER
 ENGLISH - HEIGHT 3 1/2 IN. DIAM. OF LIP 2 1/2 IN. DIAM. OF BASE 2 1/2 IN. TOTAL SPREAD OF HANDLES 11 IN. OWNERS INITIALS ON HANDLE. R. M. MAKERS TOUCH LIP N166. R. M. IN BEADED CIRCLE WITH DATE 1666. SEE COTTRELL N1470. ROBERT BEAKE - ONE HANDLE REMOVED - BUT THERE WERE EVIDENT TRACES OF MARKS WHERE SECOND HANDLE FITTED - TOUCH STAMPED ON UNDERSIDE OF BASE - BOUGHT IN LONDON.

N2. A MUG
 ENGLISH - HEIGHT 5 1/2 IN. DIAM. OF LIP 2 1/2 IN. DIAM. OF BASE 2 1/2 IN. TYPE SIMILAR TO N1 PAGE 11. MAKERS TOUCH CENTRE OF BASE INSIDE - MUCH WORK - A LICENSE WITH INITIALS L.T. AND DATE. SEE COTTRELL N14700. GIVEN AS 1658 OF WHICH ONLY 16 - IS VISIBLE ON THIS PIECE. OWNERS INITIALS ON HANDLE L.T.E. - ON RIM STAMP MEASURE. PROBABLY THE CITY OF LONDON - QUEEN ANNE'S PERIOD - SEE MARGIN FOR THESE. INCLUDING DESCRIPTION ON FRONT - THE DECOR HAS TWO BANDS OF ENRICHMENT THE UPPER A GADRONE WITH BEADING ABOVE AND BELOW - THE LOWER ALTERNATE FLUTE AND GADRONE WITH ONE ROW OF BEADING - PROBABLY TURKEY IN DEEDS NEAR COLNEY.

N3. A MUG
 ENGLISH - SOMEWHAT SIMILAR TO N1 PAGE 229. THE DRUM ENCRUILED WITH 4 SETS OF DOUBLE ENGRAVED LINES FORMING TWO HORIZONTAL BANDS AND PROTECTING LIP AND BASE - HEIGHT 6 1/2 IN. DIAM. OF LIP 4 IN. DIAM. OF BASE 4 1/2 IN. MAKERS TOUCH INSIDE BASE - AN HOUR GLASS IN B.C. WITH P.D. - SEE COTTRELL TOUCH 3352. I. PETER. DUFFIELD - L.T. N14 - OWNERS INITIALS ON HANDLE ERASED - ENGRAVED R.E. Applebee Tal-ferbridge Court 1677 FALCONBERG OR FALCONBRIDGE COURT 15 IN. SQ. LONDON - ON EAST OF BOND SQUARE, TURNING NORTH OUT OF SUTTON STREET - IMITATION SILVER MARKS ON RIM CONSISTING OF TWO LEOPARDS HEADS AND TWO LIONS PASANT ALTERNATE.

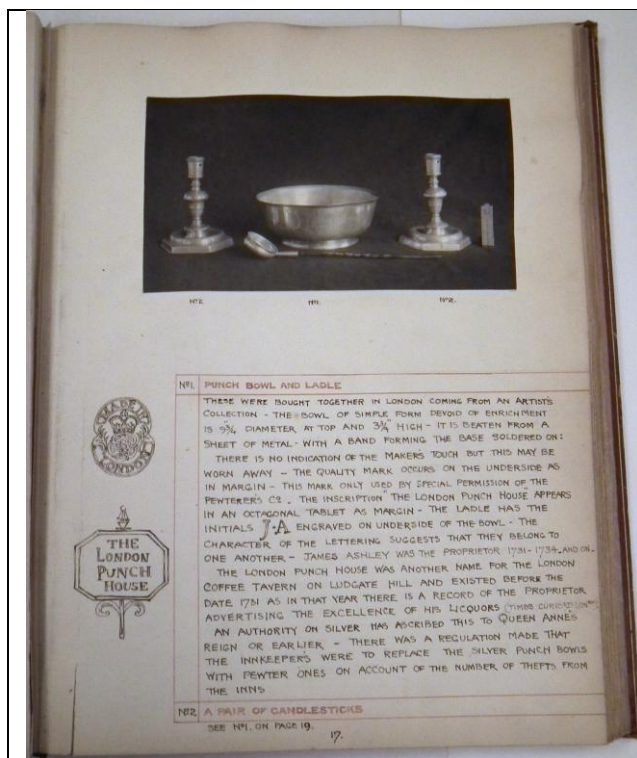


N1. BEAKER
 ENGRAVED AND ETCHED - THE PATTERN OF TWO DESIGNS IS ALTERNATED ON FOUR BAYS - MAKERS TOUCH A CURD IN PROFILE - BLOWING A HORN - INITIALS P.B. DATE 1762. DUTCH - BOUGHT IN LONDON. HEIGHT 5 1/2 IN.

N2. BEAKER
 DUTCH - LATE 17th OR EARLY 18th CENT. - WRIGGLED AND ENGRAVED WITH TWO DESIGNS ALTERNATING IN FIVE BAYS - HEIGHT 6 1/2 IN. MAKERS TOUCH ROSE AND CROWN WITH INITIALS - P.B. ORIGINAL ETCHED INITIAL E ALSO INITIALS L.G.G. ALL ON BASE EXTERNALLY - BOUGHT AT DORDRECHT.

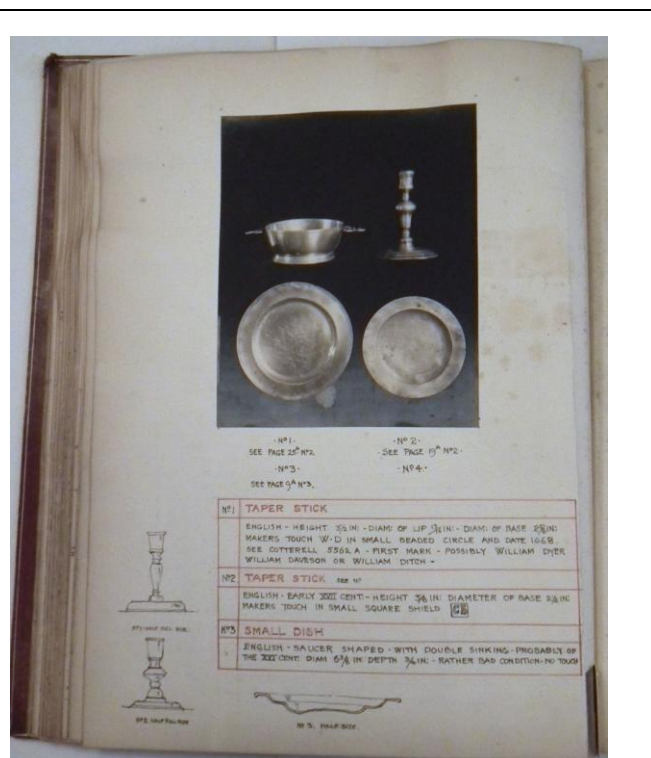
N3. BEAKER
 SIMILAR IN SHAPE AND CHARACTER TO LAST - WITH WRIGGLED ENGRAVING CONSISTING OF TWO BORDERS AND ALTERNATING DESIGNS IN FOUR BAYS - SIMILAR DESIGN TO N1. MAKERS TOUCH A CROWNED ROSE WITH SIX PETALS. OWNERS INITIALS I.R.M. AND K.A. SCRATCHED AT BOTTOM - BOUGHT IN LONDON - HEIGHT 6 1/2 IN.

N4. SMALL BEAKER
 HEIGHT 5 1/2 IN. DIAMETER AT MOUTH 5 1/2 IN. ENGRAVED WITH DEEP WRIGGLED LINE - IN CONTRAST WITH UNREPEATING DESIGN - MAKERS TOUCH AND THE OWNERS INITIALS AS MARGIN EARLY 18th CENT. DUTCH - BOUGHT IN LONDON.



N1. PUNCH BOWL AND LADLE
 THESE WERE BOUGHT TOGETHER IN LONDON COMING FROM AN ARTISTS COLLECTION - THE BOWL OF SIMPLE FORM DEVOID OF ENRICHMENT IS 9 1/2 IN. DIAMETER AT TOP AND 3 1/4 IN. HIGH - IT IS BEATEN FROM A SHEET OF METAL - WITH A BAND FORMING THE BASE SOLDERED ON: THERE IS NO INDICATION OF THE MAKERS TOUCH BUT THIS MAY BE WORN AWAY - THE QUALITY MARK OCCURS ON THE UNDERSIDE AS IN MARGIN - THIS MARK ONLY USED BY SPECIAL PERMISSION OF THE PENTWELERS CO. - THE INSCRIPTION THE LONDON PUNCH HOUSE APPEARS IN AN OCTAGONAL TABLET AS MARGIN - THE LADLE HAS THE INITIALS J.A. ENGRAVED ON UNDERSIDE OF THE BOWL - THE CHARACTER OF THE LETTERING SUGGESTS THAT THEY BELONG TO ONE ANOTHER - JAMES ASHLEY SUGGESTS THAT THEY BELONG TO THE LONDON PUNCH HOUSE WAS ANOTHER NAME FOR THE LONDON COFFEE TAVERN ON LUDGATE HILL AND EXISTED BEFORE THE DATE 1731 AS IN THAT YEAR THERE IS A RECORD OF THE PROPRIETOR ADVERTISING THE EXCELLENCE OF HIS LIQUORS THIS COULD BE AN AUTHORITY ON SILVER HAS ASCRIBED THIS TO QUEEN ANNE'S REIGN OR EARLIER - THERE WAS A REGULATION MADE THAT THE INNKEEPERS WERE TO REPLACE THE SILVER PUNCH BOWLS WITH FEWTER ONES ON ACCOUNT OF THE NUMBER OF THEFTS FROM THE IRMS

N2. A PAIR OF CANDLESTICKS
 SEE N1, ON PAGE 19.



N1. SEE PAGE 22 N2.
 N2. SEE PAGE 19 N2.
 N3. SEE PAGE 5 N3.
 N4. SEE PAGE 19 N2.

N1. TAPER STICK
 ENGLISH - HEIGHT 3 1/2 IN. DIAM. OF LIP 3/16 IN. DIAM. OF BASE 2 1/2 IN. MAKERS TOUCH W.D. IN SMALL BEADED CIRCLE AND DATE 1668. SEE COTTRELL 5562 A - FIRST MARK - POSSIBLY WILLIAM DYER WILLIAM DAVIDSON OR WILLIAM DUTCH.

N2. TAPER STICK
 ENGLISH - EARLY 18th CENT. - HEIGHT 3 1/2 IN. DIAMETER OF BASE 2 1/2 IN. MAKERS TOUCH IN SMALL SQUARE SHIELD.

N3. SMALL DISH
 ENGLISH - SAUCER SHAPED - WITH DOUBLE SINKING - PROBABLY OF THE 18th CENT. DIAM. 6 1/2 IN. IN DEPTH 3/16 IN. RATHER BAD CONDITION - NO TOUCH

