

A Fynde - various advertising and more recorded by Alan Vincent Sutherland-Graeme in the period 1919-1930

XVIIth, XVIIIth and Early XIXth CENTURY
PEWTER
LICENSED VALUER for Insurance, Probate, etc.
Collections Catalogued **A. FYNDE, 16 Park Road,**
Regent's Park, N.W.1
Early Closing Thursday.
Open all day Saturday. (3 minutes from BAKER STREET STATIONS).

C 1919

Please
business
6/24

Edward Gordon Vankar
Burrans + Co Ltd
Robert Bushnell
16, Park Road,
Regent's Park,
N.W.1.

A. FYNDE,
PROPRIETOR: F. BEVAN.
ANTIQUES.

Sent by Colwell 27/5/20. Same porcelain
mark as on my fleur de lis 1/2 pint.

PEWTER



17-century English
Tankard.

Height to lip, $5\frac{1}{8}$ in.

Height to top of thumb-
piece, $6\frac{5}{8}$ in.

Diameter of base, $4\frac{3}{4}$ in.

Maker's touch inside
bottom of Tankard:—

T.C. in s.b.c.

March 1922

A. FYNDE, 16 Park Rd., Regent's Park, N.W.1

(Three minutes from Baker Street Stations)

PEWTER



17th Century English
FLAGON.

Height to lip, $7\frac{3}{8}$ in.

Diam. of base, $5\frac{1}{4}$ in.

— Apl/22

A. FYNDE

16, Park Road

Regent's Park, N.W.1

(Three minutes from Baker Street Stations)

Telephone—Paddington 6336

PEWTER



ENGLISH FLAGON, c. 1740.

Height to lip, $9\frac{1}{8}$ in.

Height to top of thumb-piece,
11 in.

Diameter of base, $5\frac{3}{4}$ in.

There is an indistinct "touch"
inside bottom of flagon.

A. FYNDE

16, Park Road,

Regent's Park,

N.W. 1

(Three minutes from
Baker Street Stations)

apt

/22

PEWTER



17th-CENTURY
ENGLISH TANKARD.

Height to lip, $4\frac{1}{2}$ in.

Height to top of thumb-piece,
6 in.

Diameter of base, $4\frac{3}{8}$ in.

Pewterer's touch inside
bottom of tankard:—

A cup or chalice between
initials T.B., 3 stars above,
all in small circle.

C
5478A

A. FYNDE

16, Park Road, Regent's Park, N.W. 1

(Three minutes from Baker Street Stations)

May, 1922.—No. ccxlix

Dr. Idecarantz 3/5/22

Connoisseur June 1922

PEWTER

ENGLISH
CHURCH FLAGON.
Circa 1770.

Height to lip, 9 in.
Height to top of knob, $12\frac{1}{4}$ in.
Diameter of base, 6 in.



A. FYNDE
16, Park Road,
Regent's Park,
N.W. 1

(Three minutes from
Baker Street Stations)

PEWTER

Baptismal Basin

9 $\frac{5}{8}$ in. broad,
3 $\frac{3}{4}$ in. high.

Engraved
inscription:—

“Sollomon Lacy,
Gent.,
Church-Warden,
1727,
Weston.”

Maker's touch upon
bottom.



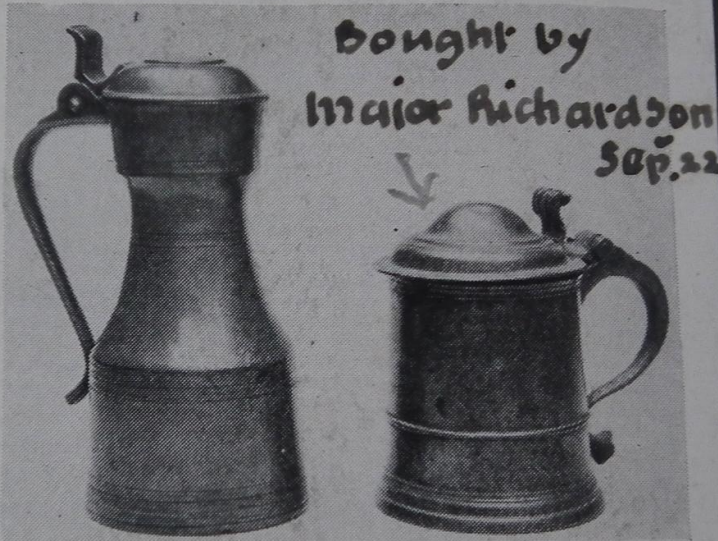
A. FYNDE, 16 Park Rd., Regent's Park, N.W. 1

(Three minutes from Baker Street Stations) *July 22*

PEWTER

TAPPIT HEN
(Chopin).
Height to lip, $7\frac{3}{8}$ in.
Diam. of base,
 $3\frac{7}{8}$ in.

TANKARD C.1740
Made by
RICHARD GOEING
of Bristol.
Height to lip, $4\frac{1}{4}$ in.
Diam. of base,
 $4\frac{1}{8}$ in.



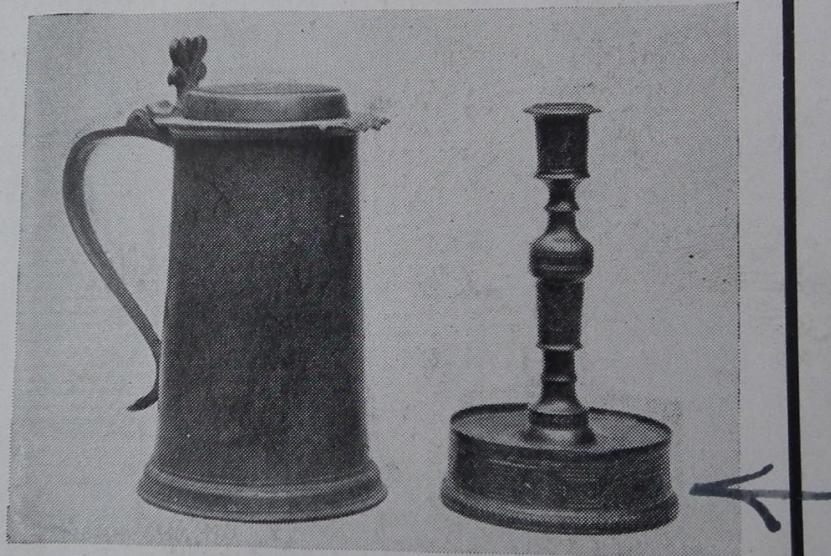
A. FYNDE, 16 Park Rd., Regent's Park, N.W. 1.

(Three minutes from Baker Street Stations) Telephone—Paddington 6336.

PEWTER

17th-Century
ENGLISH
FLAGON.
Height to lip, 9 in.
Diam. of base,
6 in.

17th-Century
CANDLESTICK
(Continental).
 $9\frac{1}{2}$ in. high.



A. FYNDE, 16 Park Rd., Regent's Park, N.W. 1

(Three minutes from Baker Street Stations) Telephone—Paddington 6336

PEWTER

Conn. Oct/22

17th Century English Tankard.

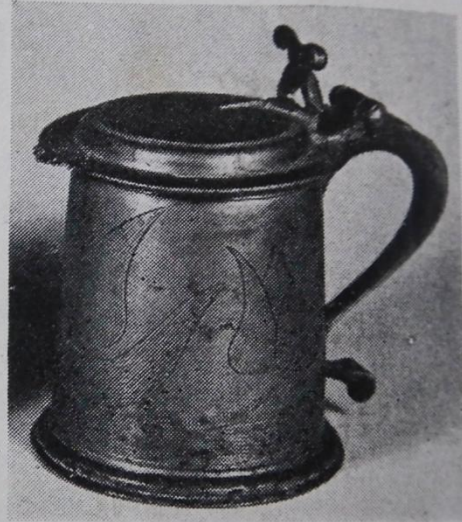
Height to lip, $4\frac{3}{4}$ in.

Diam. of base, $4\frac{5}{8}$ in.

Pewterer's touch inside bottom
of tankard:

CHARLES WAD(E)?

Device, a bird.



A. FYNDE, 16 Park Rd., Regent's Park, N.W.1

(Three minutes from Baker Street Stations)

Telephone—Paddington 6336

PEWTER



Continental
ROSE-WATER DISH.

Circa 1600.

$13\frac{1}{2}$ in. diameter.

A. FYNDE

16, Park Road

Regent's Park

nov^r 22

N.W. 1

(Three minutes from Baker Street Stations)

Telephone—Paddington 6336

Times 29/11/22

PEWTER, nearly 2,000 pieces, from 2s. 6d. to £40.—
A. Fynde, 16, Park-road, N.W.1, three minutes from
Baker-street Stations.

Comm. Dec/22

PEWTER



SCOTTISH COMMUNION CUP
(Tumbler Pattern).

$6\frac{5}{8}$ in. high.

$4\frac{1}{2}$ in. diam. top.

$3\frac{3}{8}$ in. diam. bottom.

—
Pewterer's Touch :
Hour-glass in small beaded circle.

A. FYNDE

16, Park Road

Regent's Park, N.W.1

(Three minutes from Baker Street Stations)

Telephone—Paddington 6336

PEWTER



Early 18th Century
TANKARD.

Height to lip - $5\frac{1}{2}$ in.
Diameter of base, $5\frac{1}{2}$ in.

Four so-called "silver" marks
on body near handle.

"S.T." in small shield inside
bottom.

— Feb. 1923

A. FYNDE

16, Park Road

Regent's Park, N.W.1

(Three minutes from Baker Street Stations)

Telephone—Paddington 6336

Bazaar 6/7/23

A PEWTER DINNER-SERVICE.

THERE was sold at Christie's recently for the sum of £110 5s. a pewter dinner-service consisting of 119 plates, fifteen dishes, two soup-tureens and covers, and six sauce-boats. The service was the property of Lord Bolton, and came from Bolton Hall, Yorkshire. Some of the plates and dishes had a B surmounted by a coronet engraved upon their rims. When we remember the extent to which pewter was used in the making of domestic utensils during the seventeenth, eighteenth, and early nineteenth centuries, and that during this period every large establishment had its service of pewter, it is a matter for surprise that such a service, even one of nineteenth-century manufacture, is to-day a *rara avis*.

With the exception of a few pieces to be seen in museums and in private collections, it is, unfortunately, safe to say that there is no English pewter earlier than the seventeenth century extant. It is true that owing to excavations, &c., pewter of the middle and earlier ages is from time to time unearthed, but such "finds" are for the antiquaries rather than for the ordinary collectors of pewter. Pewter services were made during the reign of Charles I. to replace the services of silver that were melted down to provide pay, &c., for the Royalist armies, but it is very improbable that even a single piece from these services will ever be available to enrich a present-day collection. Services of late seventeenth-century manufacture are known, but all have been divided up. Even so, the possessor of only one plate of such a service has a much-prized treasure.

As china and earthenware became cheaper, so pewter became less in demand. Various white alloys were also introduced towards the end of the eighteenth century, and their durability and lower cost of manufacture dealt a further blow to the pewter industry. Pewter services that were not disposed of at the time were relegated to cellars and other unsuitable places. Periodically these services, oftener than not the recognised perquisite of the butler, were passed on to the itinerant buyer of old metal, who bought by weight, paying only a few pence per pound. The Bolton service, which is very late Georgian, is of interest only as a service. There is nothing in it of particular merit—certainly nothing to excite the collector. One of the soup-tureens has a coat-of-arms engraved upon both the tureen and its cover. This piece is of fine metal and is of an earlier date than the plates. Many of the latter show evidence of repair by the estate or local blacksmith.

The service is unlikely to take a place in any English collection, though it may find a home in the West. If it is divided up another pewter service has certainly "gone West."

A. FYNDE.

PEWTER



18th-Century English
TANKARD.

Height to lip $6\frac{3}{4}$ in.

Height to top of
thumbpiece $8\frac{1}{4}$ in.

Diameter of base .. $6\frac{1}{2}$ in.

Engraved on body—
“J. C. Childockford, 1745.”

A. FYNDE

16, Park Road,
Regent's Park,
N.W. 1

Nov.
1923

Telephone—Paddington 6336.

(Three minutes from Baker Street Stations.)

PEWTER

Dec/23
Ewer

17th-Century
(circa 1650)
ENGLISH
FLAGON.

Height to lip,
 $9\frac{1}{8}$ in.

Height to top
of thumb-
piece, $11\frac{1}{8}$ in.

Diam. of
base, $5\frac{3}{8}$ in.

“Touch” on
handle: Ewer
and lidded
flagon in
small beaded
circle.

“(E.G.)”



A. FYNDE, 16, Park Road, Regent's Park, N.W.1

Telephone: Padd. 6336

Three minutes from Baker Street Station



The Treasurer - LEWIS CLAPPERTON, 2 West Regent Street,
 Joint Hon. Secretaries - WALTER G. CHURCHER, 6 South Parade, Bedford Park, London, W 4.
 HOWARD H. COTTERELL, F.R.Hist.S.,
 Croxley Green, Herts.

2 West Regent Street,
Glasgow.

1st July, 1930.

Dear Sutherland-Graeme,
I respect your views both on pewter as a collector and on things in general as a sensible man.

I am very glad to have your letter, because

I take it that your ^{decision} ~~decision~~ is that you think Cotterell is quite entitled to work his scheme as a private venture provided the Society's name is not involved, and that he is well qualified to do so.

I agree as to this last (Cooke would not, he told me he knew of several pieces which C. had sold to collectors, he advised them to buy, which were duds) but I think with Webster that it is not right that the power of starrng or damning a piece should be in the hands of any individual, however capable and if such a power is to be recognised or respected it must be in the hands of a jury and in difficult cases consult together and vote.

I may say that Fynde hinted to me that C. had 'dow'ed on him and that he would, therefore, be afraid to submit any pieces to him. This fear, justified or not, seems to me to show that the scheme is not one that would enjoy public confidence.

I have written so fully in my letters to Sutherland about the suggestion that the Society should try to come to some arrangement with C. to work a joint scheme that I need not repeat myself here. Personally I fear that no modus vivendi is possible and I would like the effort to be made. It it fails then the Society will, I take it, make their disapproval of such a scheme in private known, and I think C. will at once resign. He wrote me on 10th May that there was within the Society a small clique which "by a series of unkind pin prick suggestions drove him from the work of the Hon. Secy. which he loved" and I know he was deeply (and I think hurt) by the omission at the January Meeting of any congratulatory

A. FYNDE,
PROPRIETOR: F. BEVAN.
ANTIQUES.

16, Park Road,
Regents Park,
N.W. 1.

July 27th 1930

Dear Sir -

I have to thank you for
so kindly writing me about the pewter
Chalice.

Mr. Clapperton did see
them a few weeks ago - and the
Chalice is the type he is looking

for. Unfortunately I cannot split
up the set - and Mr. Clapperton
does not want the Rapon.

Please excuse delay in acknowledging
your letter - I am in a nursing home at the moment
and again thank you very
graciously

A. Sutherland Graeme & Co.

Yours faithfully
A. Fynde