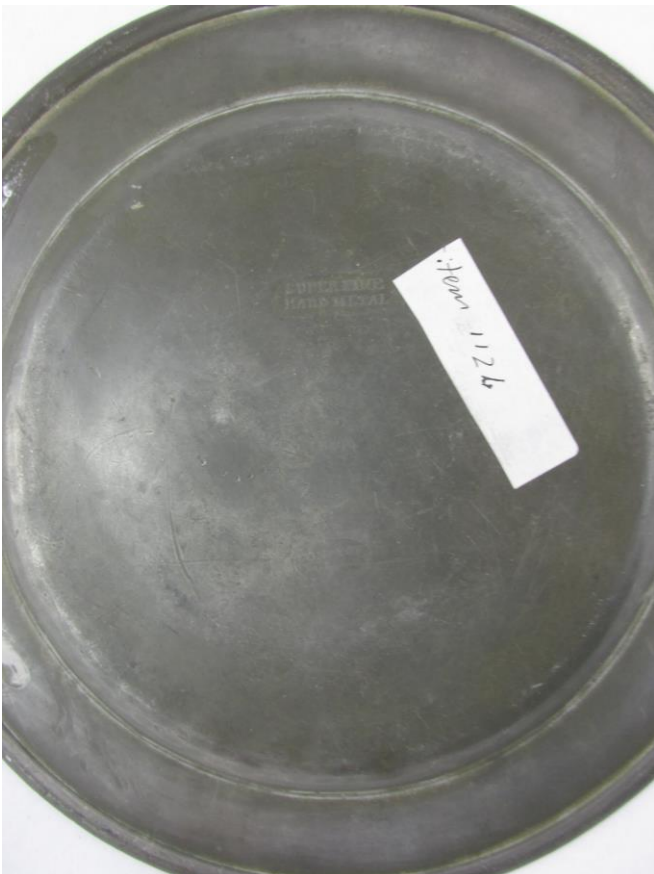


AN INTERESTING PLATE



Marked to the back as

and at close up




From the UK Pewter Society Data Base -

COMPTON worked in London from 1814-1855

(**TOWNSEND COMPTON** from 1802-1834)

BROWN AND ENGLEFIELDS worked 1885-1935 before becoming Englefields.

The following is their advertisement at the 1904 Clifford's Inn Exhibition



(Designed by Mr. HAROLD STABLER).

Messrs. BROWN & ENGLEFIELD.
Pewterers,
1, LITTLE JAMES STREET,
GRAY'S INN ROAD.

Successors to the old firm of Compton & Co., and
possessors of the moulds and tools of Townend & Compton,
from which dishes, plates, and castors are still made.

Old Pewter carefully Repaired.

A 9 1/2 in. plain rimmed plate used in a London chop house, the rim engraved 'Thomas' Chop House, Cornhill' with on the reverse the label 'Superfine Hard Metal' The piece is curious as bearing the touch mark OP 1063 of Thomas Compton, London and that of